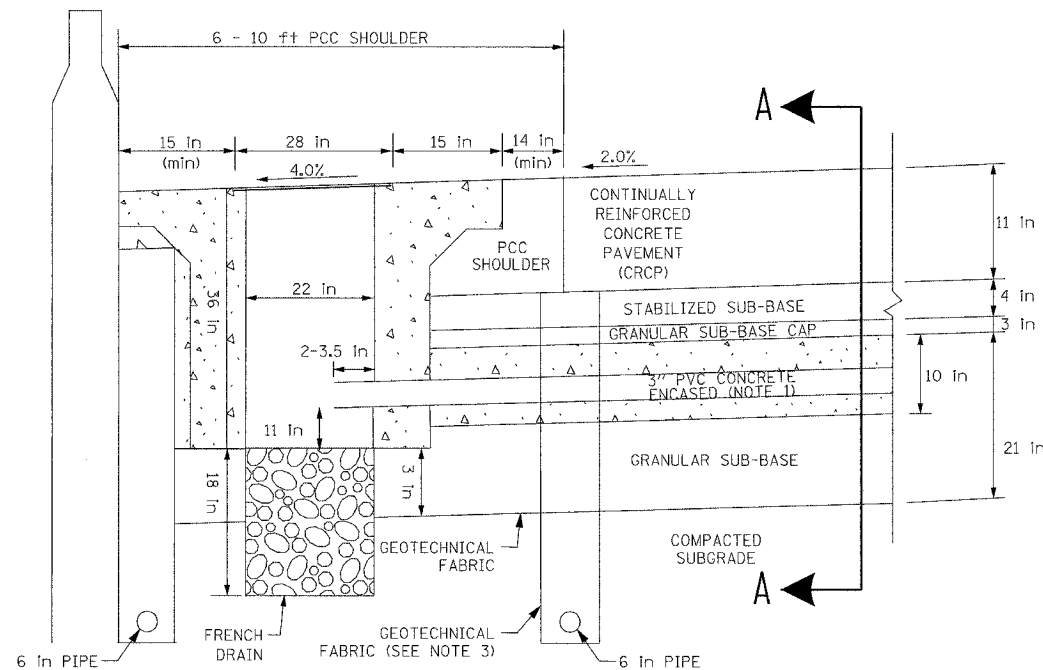
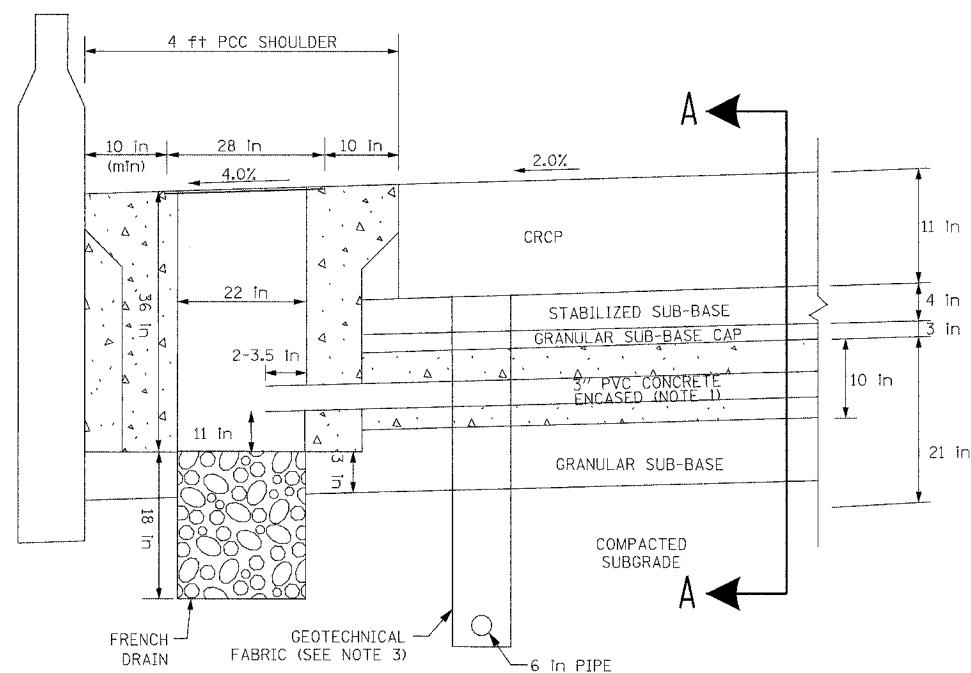


F.A.I. RTE.	SECTION	COUNTY	TOTAL SHEETS	SHEET NO.
94	*	COOK	860	345
STA.	TO STA.			
FED. ROAD DIST. NO. 1 ILLINOIS FED. AID PROJECT				
* (1516.1.1717 & 1818) B-8				

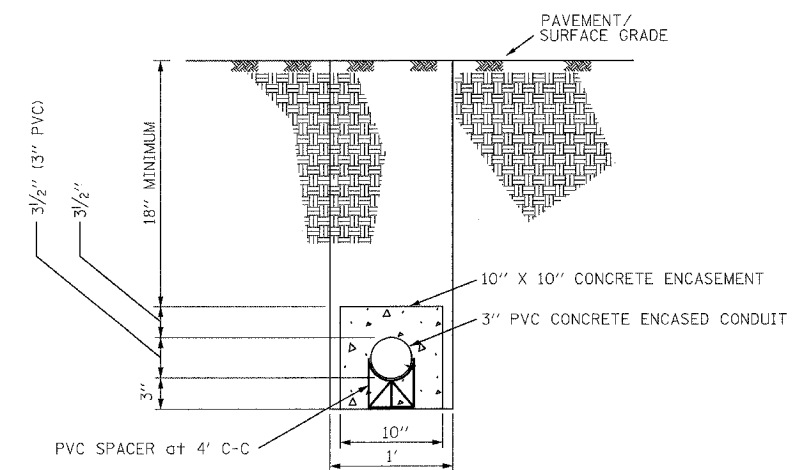
62694



HEAVY DUTY HANDHOLE IN 4' TO 6' RAMP SHOULDER (TYPICAL)



HEAVY DUTY HANDHOLE (SPECIAL) IN 4' RAMP SHOULDER (TYPICAL)



SECTION A-A
TYPICAL 3" PVC CONCRETE ENCASED CONDUIT UNDER PAVEMENT DETAIL
(FOR MICROLOOP INSTALLATION IN PROPOSED RAMP PAVEMENT)

NOTES:

1. 3" PVC CONCRETE ENCASED CONDUIT IS REQUIRED ONLY WHERE SHOWN ON THE PLAN DRAWINGS. WHEN INSTALLED, THE CONDUIT MUST MAINTAIN THE SAME ANGLE AS THE PAVEMENT THROUGHOUT ITS ENTIRE LENGTH.
2. FOR HANDHOLE DETAIL SEE SHEET EI-106.
3. WHEN INSTALLING CONDUIT NEAR OR THROUGH UNDERDRAIN GEOTECHNICAL FABRIC, THE CONTRACTOR SHALL MAINTAIN THE INTEGRITY AND UNIFORMITY OF THE UNDERDRAIN FABRIC THROUGH OVERLAP TO THE SATISFACTION OF THE ENGINEER.

17A/EI-110

REVISIONS		ILLINOIS DEPARTMENT OF TRANSPORTATION F.A.I. 90/94 (DAN RYAN EXPRESSWAY)
NAME	DATE	
		TYPICAL HANDHOLE INSTALLATION DETAIL - RAMP SHOULDER
SCALE: NTS		DRAWN BY: NB
DATE: MARCH 18, 2005		CHECKED BY: CTC

**Edwards
AND Kelcey**
ONE NORTH FRANKLIN
CHICAGO, IL 60606
PHONE: (312) 251-3000
FAX: (312) 251-3015
WEB: WWW.EKCORP.COM

3/24/2005 4:46:02 PM