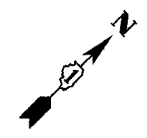
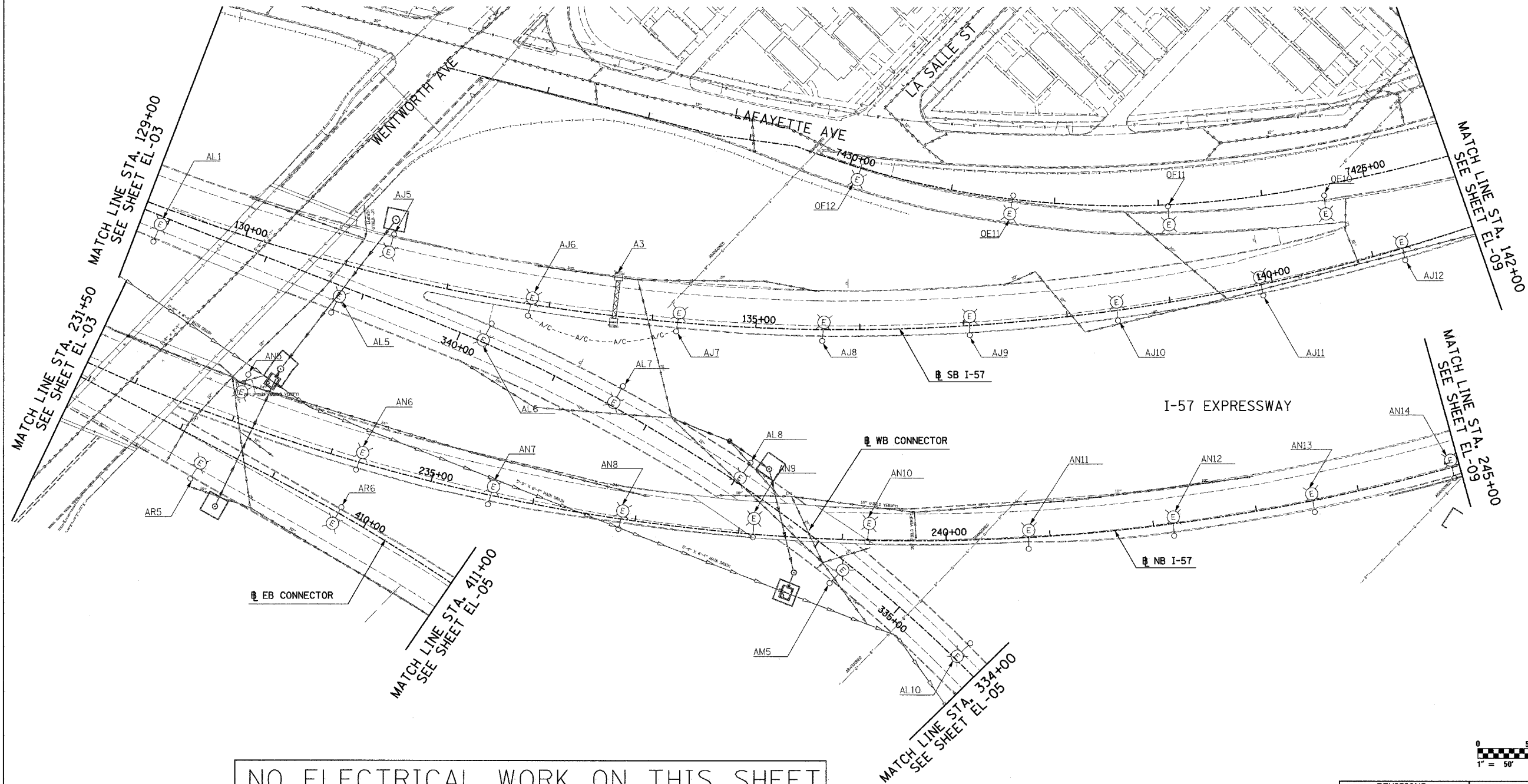


F.A.I. RTE.	SECTION	COUNTY	TOTAL SHEETS	SHEET NO.
90/94	*	COOK	860	357
STA. 129+00	TO STA. 142+00			
FED. ROAD DIST. NO.	ILLINOIS FED. AID PROJECT			
* (1516,1,1717 & 1818) R-8			62694	



- NOTES:
- SEE DRAWINGS EI-100 AND EI-101 FOR ELECTRICAL SYMBOLS AND ABBREVIATIONS.



NO ELECTRICAL WORK ON THIS SHEET FOR REFERENCE ONLY



17A/EL-04

REVISIONS	
NAME	DATE
REVISED	5/06/05

ILLINOIS DEPARTMENT OF TRANSPORTATION  
 F.A.I. 90/94 (DAN RYAN EXPRESSWAY)  
 ROADWAY LIGHTING AND SURVEILLANCE PLANS  
 EXISTING CONDITIONS, TEMPORARY  
 AND DEMOLITION  
 SCALE: 1"=50'  
 DATE: MARCH 18, 2005  
 DRAWN BY: VK  
 CHECKED BY: TM

**SINGH**  
 SINGH & ASSOCIATES, INC.  
 CONSULTING ENGINEERS

300 W. ADAMS ST.  
 CHICAGO, IL 60606  
 TEL: (312) 629-0240  
 FAX: (312) 629-8449

5/5/2005 2:24:24 PM