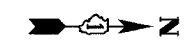
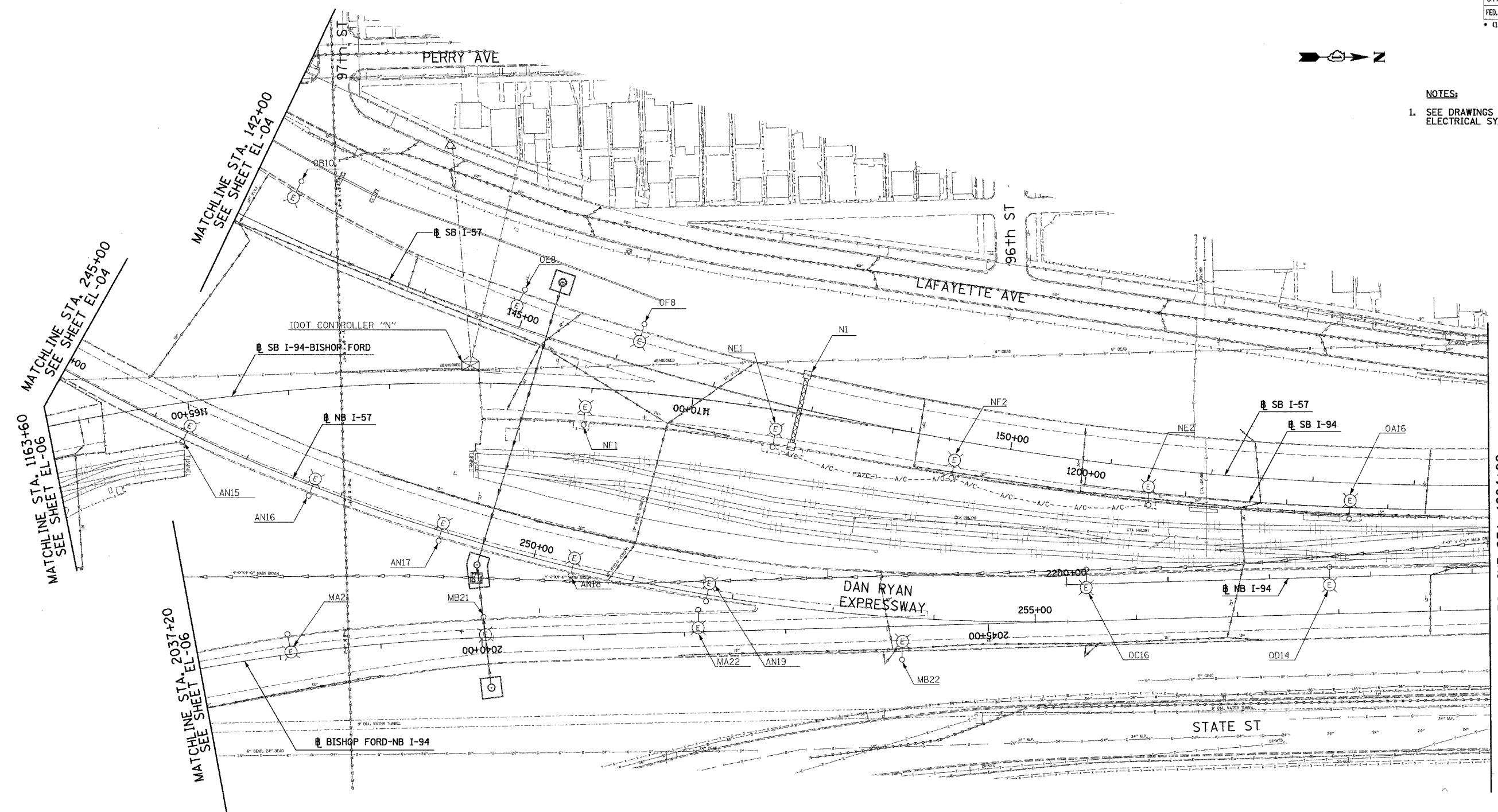


F.A.I. RTE.	SECTION	COUNTY	TOTAL SHEETS	SHEET NO.
90/94	*	COOK	860	362
STA. 142+00		TO STA. 1204+00		
FED. ROAD DIST. NO.	ILLINOIS	FED. AID PROJECT		
* (1516.1,1717 & 1818) R-8		62694		



- NOTES:
- SEE DRAWINGS EI-100 AND EI-101 FOR ELECTRICAL SYMBOLS AND ABBREVIATIONS.



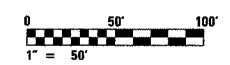
MATCHLINE STA. 1163+60
SEE SHEET EL-06

MATCHLINE STA. 142+00
SEE SHEET EL-04

MATCHLINE STA. 2031+20
SEE SHEET EL-06

MATCHLINE STA. 1204+00
SEE SHEET EL-10

NO ELECTRICAL WORK ON THIS SHEET
FOR REFERENCE ONLY



17A/EL-09

SINGH
SINGH & ASSOCIATES, INC.
CONSULTING ENGINEERS

300 W. ADAMS ST.
CHICAGO, IL 60606
TEL: (312) 629-0240
FAX: (312) 629-8449

REVISIONS	
NAME	DATE
REVISED	5/06/05

ILLINOIS DEPARTMENT OF TRANSPORTATION
F.A.I. 90/94 (DAN RYAN EXPRESSWAY)

ROADWAY LIGHTING AND SURVEILLANCE PLANS
EXISTING CONDITIONS, TEMPORARY
AND DEMOLITION

SCALE: 1"=50'
DATE: MARCH 18, 2005

DRAWN BY: VK
CHECKED BY: TM

4/27/2005 8:50:17 AM