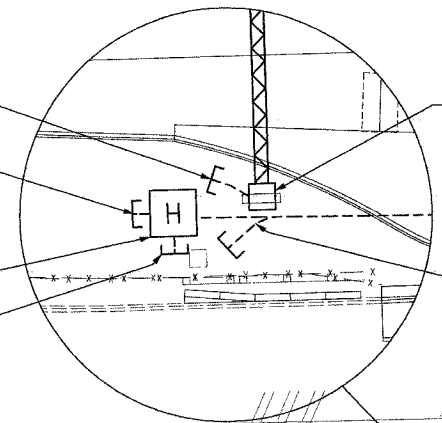
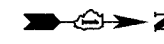


F.A.I. RTE.	SECTION	COUNTY	TOTAL SHEETS	SHEET NO.
90/94	*	COOK	860	387
STA. 12030+00		TO STA. 1243+00		
FED. ROAD DIST. NO.		ILLINOIS FED. AID PROJECT		
* (1516.1, 1717 & 1818) R-8				62694

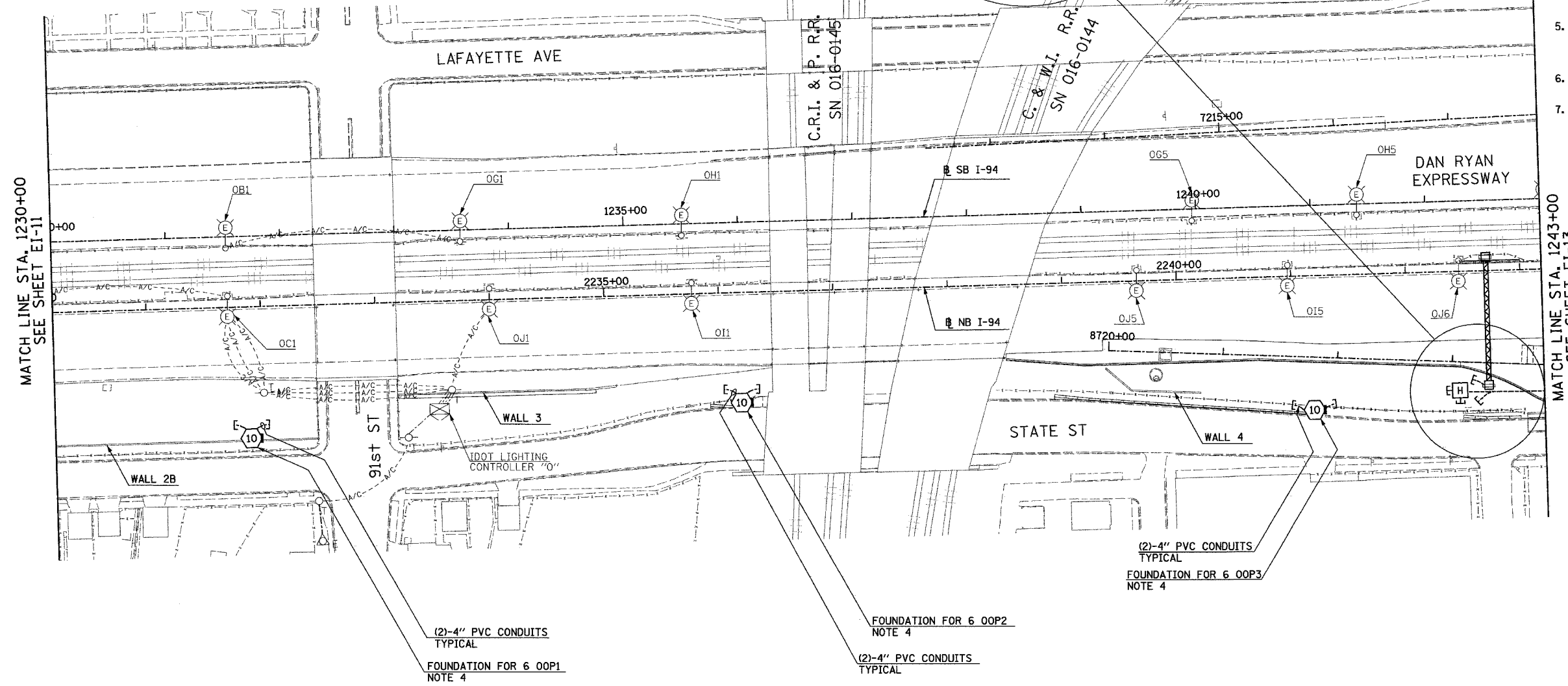
NOTES:

- SEE DRAWINGS EI-100 AND EI-101 FOR ELECTRICAL SYMBOLS AND ABBREVIATIONS.
- COORDINATE ALL WORK WITH IDOT CONTRACTS 62583 AND 62695.
- UNLESS NOTED OTHERWISE, ALL ITEMS AND WORK SHOWN IN HEAVY LINE WEIGHT ON THIS DRAWING ARE PROPOSED NEW ITEMS AND WORK.
- REFER TO STRUCTURAL DRAWINGS AND EI-104 FOR CONDUIT INSTALLATION DETAILS FOR LIGHT TOWER FOUNDATIONS MOUNTED ON RETAINING WALLS.
- SIGN STRUCTURE SHALL BE PROVIDED UNDER THIS CONTRACT. SIGN LUMINAIRES, DISCONNECT SWITCH, WIRING AND CONNECTIONS SHALL BE PROVIDED UNDER CONTRACT 62583.
- REFER TO SHEETS EI-102 AND ME-04 FOR DUCTBANK INSTALLATION DETAILS.
- REFER TO SHEET EI-107 FOR COMMUNICATIONS VAULT C1 DETAILS.



3" PVC STUBOUT
 2" RGC STUBOUT
 HH 1309, TYPE C1
 STA. 8723+08, 24 RT, NOTE 7
 (3)-3" RGC STUBOUTS

(3)-4" CNC CONCRETE ENCASED, REINFORCED,
 (2)-4" CNC FOR LIGHTING, 5 LF, NOTE 6



MATCH LINE STA. 1230+00
 SEE SHEET EI-11

MATCH LINE STA. 1243+00
 SEE SHEET EI-13

(2)-4" PVC CONDUITS
 TYPICAL
 FOUNDATION FOR 6 OOP3
 NOTE 4

(2)-4" PVC CONDUITS
 TYPICAL
 FOUNDATION FOR 6 OOP1
 NOTE 4

FOUNDATION FOR 6 OOP2
 NOTE 4
 (2)-4" PVC CONDUITS
 TYPICAL



17A/EI-12

SINGH 300 W. ADAMS ST.
 CHICAGO, IL 60606
 TEL: (312) 629-0240
 SINGH & ASSOCIATES, INC. FAX: (312) 629-8449
 CONSULTING ENGINEERS

REVISIONS		
REVISION	NAME	DATE

ILLINOIS DEPARTMENT OF TRANSPORTATION
 F.A.I. 90/94 (DAN RYAN EXPRESSWAY)

ELECTRICAL INFRASTRUCTURE PLANS
 PROPOSED IMPROVEMENTS

SCALE: 1"=50'
 DATE: MARCH 18, 2005
 DRAWN BY: VK
 CHECKED BY: TM

5/7/2005 5:03:15 PM