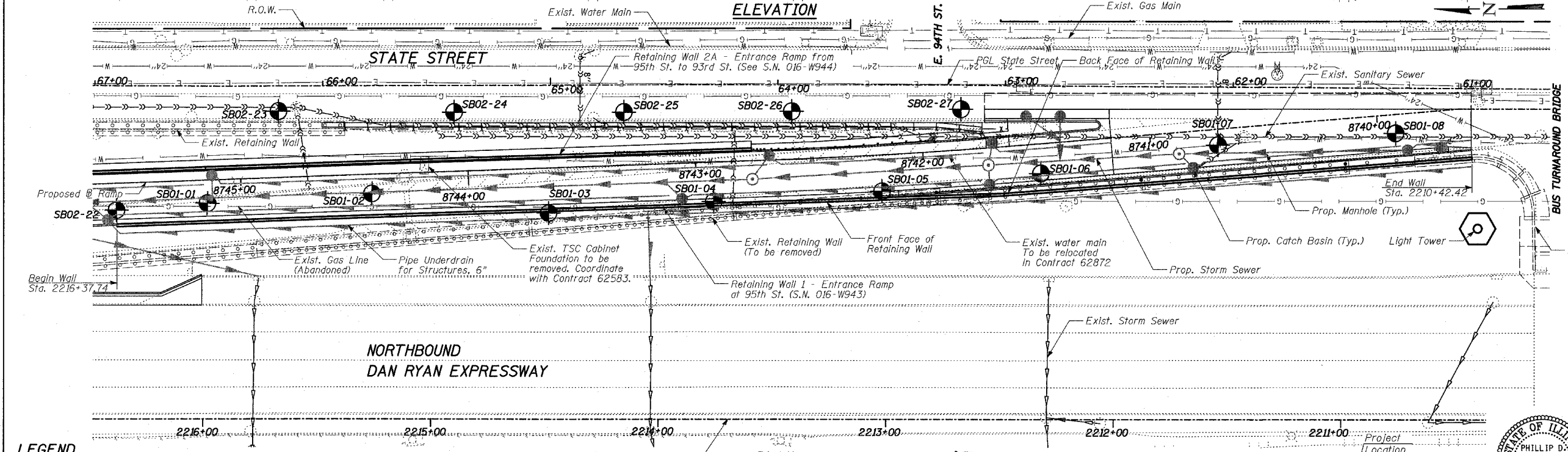
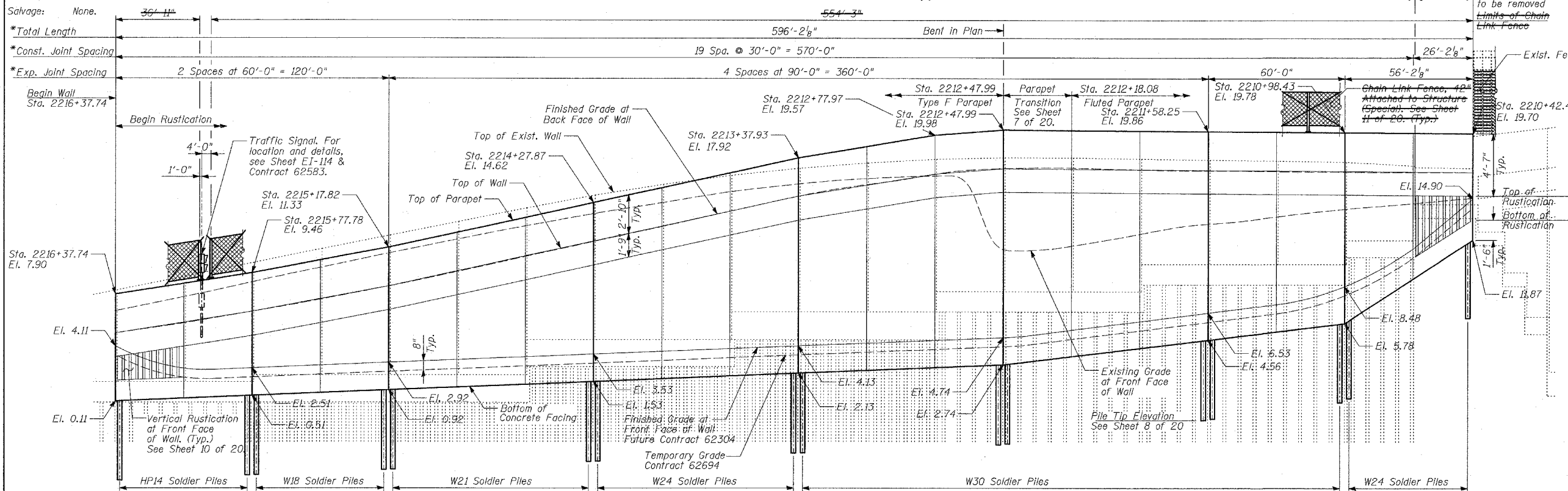


Benchmark: BM 3522 Set "+" on south southeast flange ball of hydrant \pm halfway between north and south entrance to Citgo, east side of State St. and north of 95th St. El. 18.06

Existing Structure: Reinforced concrete cantilever retaining wall, supported on concrete pile footings, along the Northbound Dan Ryan entrance ramp at 95th Street. Built in 1960. Total length \pm 630'-8"



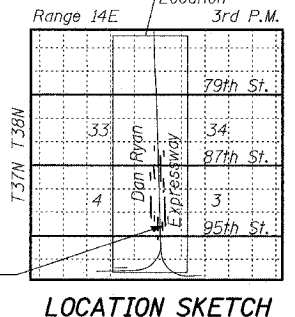
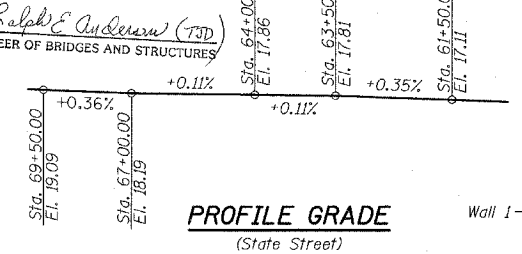
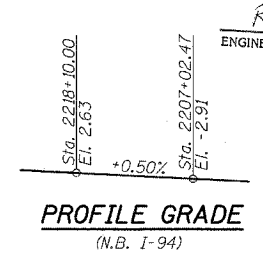
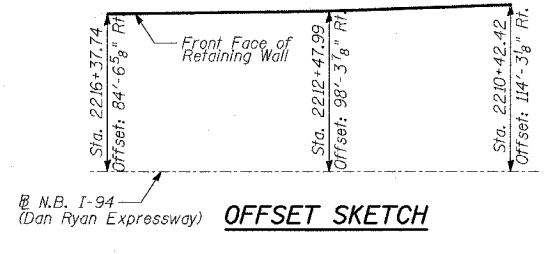
LEGEND

- \bullet Boring Location
- * Measured along Front Face of Wall.

TYLIN INTERNATIONAL

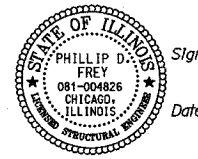
DESIGN SPECIFICATION
 AASHTO 2002 Standard Specifications for Highway Bridges

DESIGN STRESSES
FIELD UNITS
 $f'_c = 3,500$ psi
 $f_y = 60,000$ psi (Reinforcement)
 $f_y = 36,000$ psi (M270 Grade 36) Soldier Piles



APPROVED
 FOR STRUCTURAL ADEQUACY ONLY

Ralph E. Andersen (TSP)
 ENGINEER OF BRIDGES AND STRUCTURES



Signed *Phillip D. Frey*
 Phillip D. Frey, P.E., IL Lic. No. 081-004826
 Expires 11-30-2006
 Date **3/18/05**

NOTE:
 1. For General Notes, see Sheet 2 of 20.

REVISIONS	
NAME	DATE

ILLINOIS DEPARTMENT OF TRANSPORTATION
F.A.I. 94 (DAN RYAN EXPRESSWAY)
RETAINING WALL ALONG STATE ST.
ENTRANCE RAMP AT 95TH ST.
WALL 1 - GENERAL PLAN
 STA. 2216+37.74 TO STA. 2210+42.42
 S.N. 016-W943 DESIGNED BY: MI, MAF
 SCALE: N.T.S. DRAWN BY: MAF, TB
 DATE: MARCH 18, 2005 CHECKED BY: TD, MI

F.A.I. RTE.	SECTION	COUNTY	TOTAL SHEETS	SHEET NO.
94		COOK	860	412
STA. 2200+00.00		TO STA. 2362+00.00		
FED. ROAD DIST. NO.	ILLINOIS	FED. AID PROJECT		
			62694	

TOTAL BILL OF MATERIAL

ITEM	UNIT	TOTAL
Removal of Existing Structures No. 1	EACH	1
Structure Excavation	CU YD	386
Concrete Structures	CU YD	336
Protective Coat	SQ YD	1,045
Rustication Finish	SQ FT	4,585
Stud Shear Connectors	EACH	1,266
Untreated Timber Lagging	SQ FT	5,411
Furnishing Soldier Piles (HP Section)	FOOT	194
Furnishing Soldier Piles (W Section)	FOOT	3,268
Reinforcement Bars, Epoxy Coated	POUND	40,310
Geocomposite Wall Drain	SQ YD	635
Pipe Underdrains for Structures, 6"	FOOT	597
Pile Extraction	EACH	3
Drilling and Setting Soldier Piles (In Soil)	CU FT	23,276
Chain Link Fence, 42" Attached to Structure (Special)	FOOT	592

- INDEX OF SHEETS**
- GENERAL PLAN
 - REMOVAL PLAN AND DETAILS
 - PLAN AND ELEVATION STA. 2216+37.74 TO STA. 2215+17.82
 - PLAN AND ELEVATION STA. 2215+17.82 TO STA. 2213+37.93
 - PLAN AND ELEVATION STA. 2213+37.93 TO STA. 2211+58.25
 - PLAN AND ELEVATION STA. 2211+58.25 TO STA. 2210+42.42
 - PARAPET TRANSITION
 - PILE LAYOUT, DETAILS & BILL OF MATERIAL
 - WALL CROSS SECTIONS & DETAILS
 - RUSTICATION DETAILS
 - CHAIN LINK FENCE, 42" ATTACHED TO STRUCTURE (SPECIAL)
 - BORING LOGS SB01-01 & SB01-02
 - BORING LOGS SB01-03 & SB01-04
 - BORING LOG SB01-05
 - BORING LOGS SB01-06 & SB01-07
 - BORING LOGS SB01-07 & SB01-08
 - BORING LOG SB02-22
 - EXISTING RETAINING WALL (1 OF 3)
 - EXISTING RETAINING WALL (2 OF 3)
 - EXISTING RETAINING WALL (3 OF 3)

