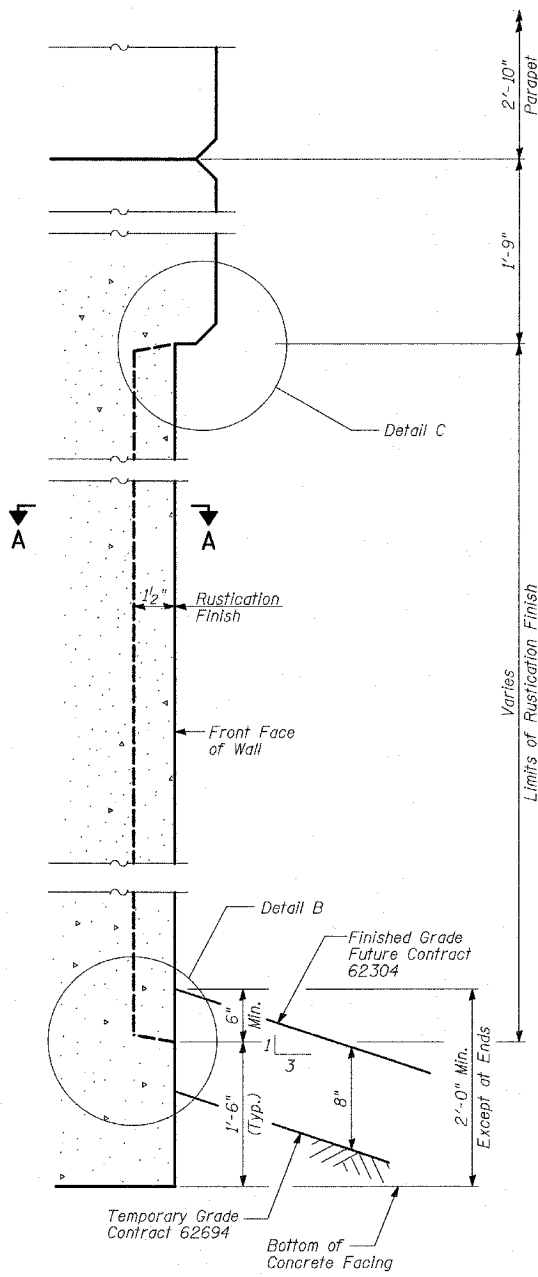
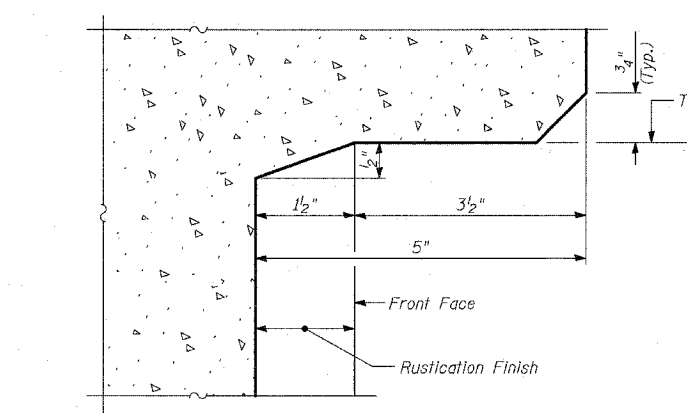


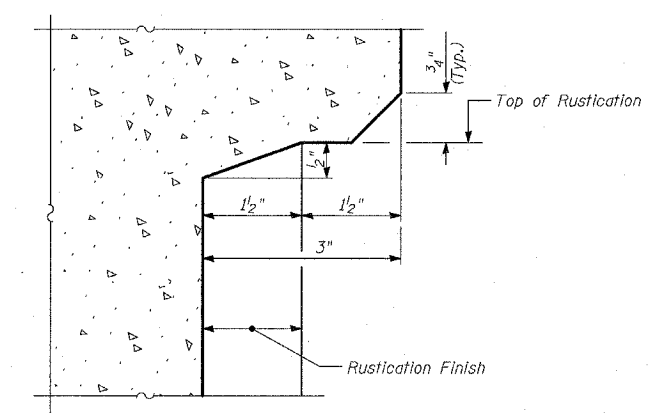
WALL DETAIL AT TYPE F PARAPET



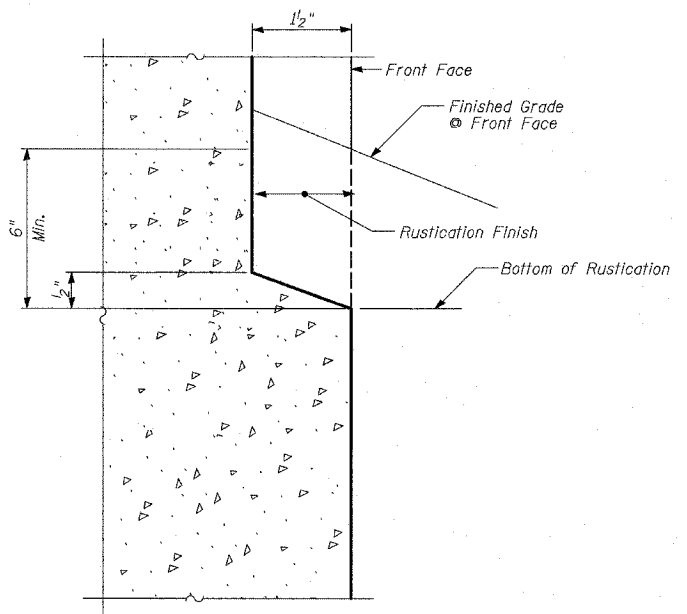
WALL DETAIL AT FLUTED PARAPET



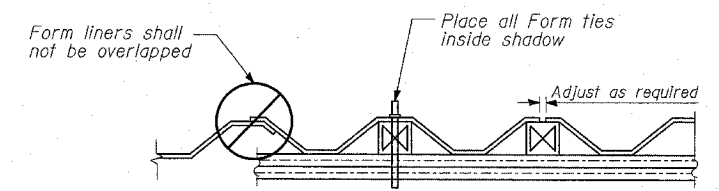
DETAIL A



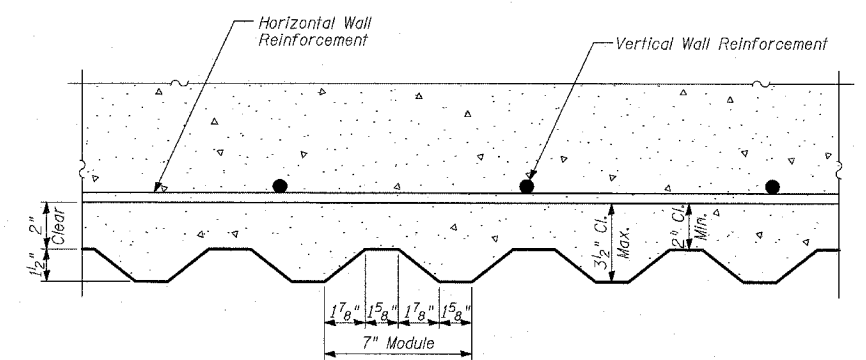
DETAIL C



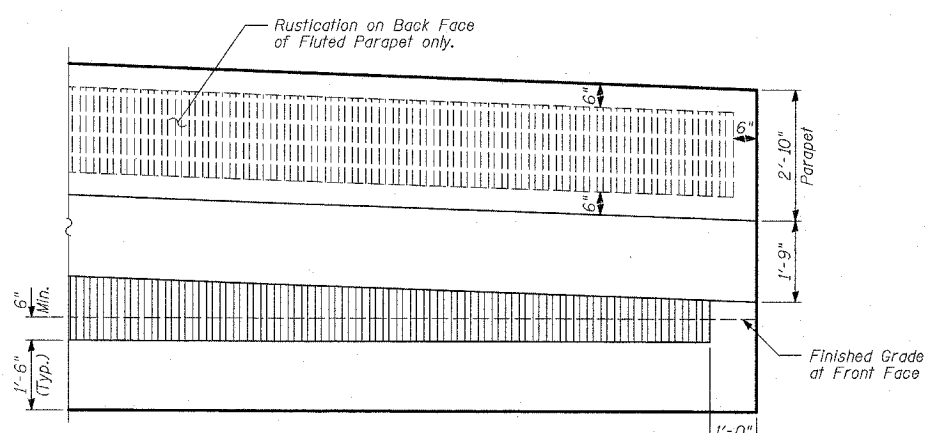
DETAIL B



SUGGESTED FORMWORK DETAIL



SECTION A-A



RUSTICATION DETAIL
(At End Pane, with Embankment)

BILL OF MATERIAL

ITEM	UNIT	TOTAL
Rustication Finish	SQ FT	4,585

REVISIONS	
NAME	DATE

ILLINOIS DEPARTMENT OF TRANSPORTATION
F.A.I. 94 (DAN RYAN EXPRESSWAY)
RETAINING WALL ALONG STATE ST.
ENTRANCE RAMP AT 95TH ST.
WALL 1
RUSTICATION DETAILS
 S.N. 016-W943 DESIGNED BY: MI, MAF
 SCALE: N.T.S. DRAWN BY: MAF, TB
 DATE: MARCH 18, 2005 CHECKED BY: TD, MI

NOTES:
 1. See Sheet 9 of 20 for expansion and construction joint details.