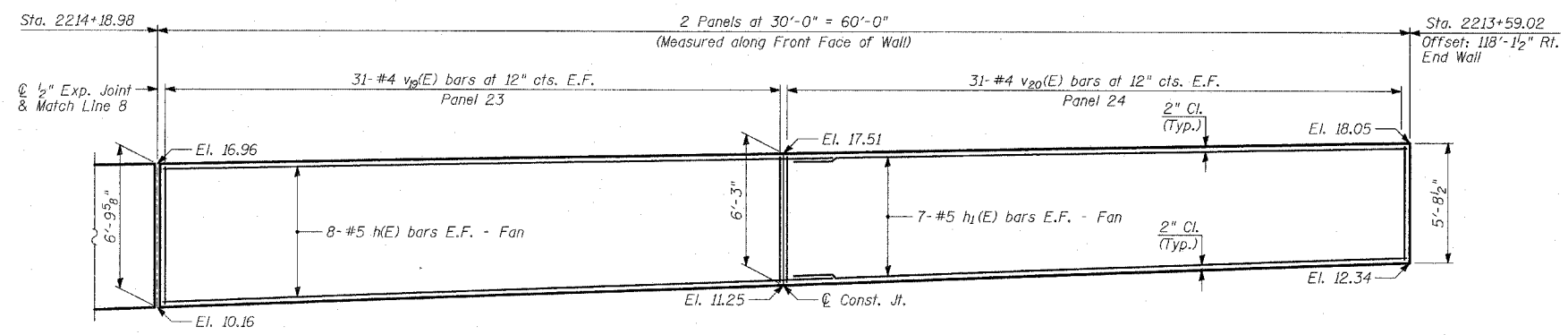
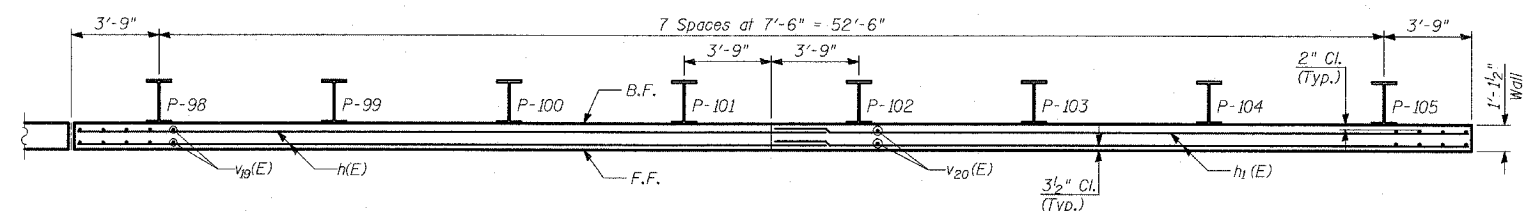


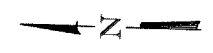
|                             |          |                    |              |           |
|-----------------------------|----------|--------------------|--------------|-----------|
| F.A.I. RTE.                 | SECTION  | COUNTY             | TOTAL SHEETS | SHEET NO. |
| 94                          | •        | COOK               | 860          | 437       |
| STA. 2200+00.00             |          | TO STA. 2362+00.00 |              |           |
| FED. ROAD DIST. NO.         | ILLINOIS | FED. AID PROJECT   |              |           |
| • (1516.1, 1717 & 1818) R-8 |          |                    |              | 62694     |



**ELEVATION**



**PLAN**



- NOTES:**
1. B.F. - denotes Back Face.
  2. E.F. - denotes Each Face.
  3. F.F. - denotes Front Face.
  4. Work this Sheet with Sheets 7 thru 10 of 18.
  5. Pile spacing measured along front face of wall.
  6. For Lap Splices, see Sheet 7 of 18.

**TYLIN**INTERNATIONAL

| REVISIONS |      |
|-----------|------|
| NAME      | DATE |
|           |      |
|           |      |
|           |      |
|           |      |
|           |      |
|           |      |
|           |      |
|           |      |
|           |      |
|           |      |

ILLINOIS DEPARTMENT OF TRANSPORTATION  
**F.A.I. 94 (DAN RYAN EXPRESSWAY)**  
**RETAINING WALL ALONG STATE ST.**  
**ENTRANCE RAMP FROM 95TH ST. TO 93RD ST.**  
**WALL 2A - PLAN AND ELEVATION**  
**STA. 2214+18.98 TO STA. 2213+59.02**  
 S.N. 016-W944 DESIGNED BY: MI, DJR  
 SCALE: N.T.S. DRAWN BY: DJR, MAF  
 DATE: MARCH 18, 2005 CHECKED BY: TD, MI

03/21/2005 02:27:07 PM