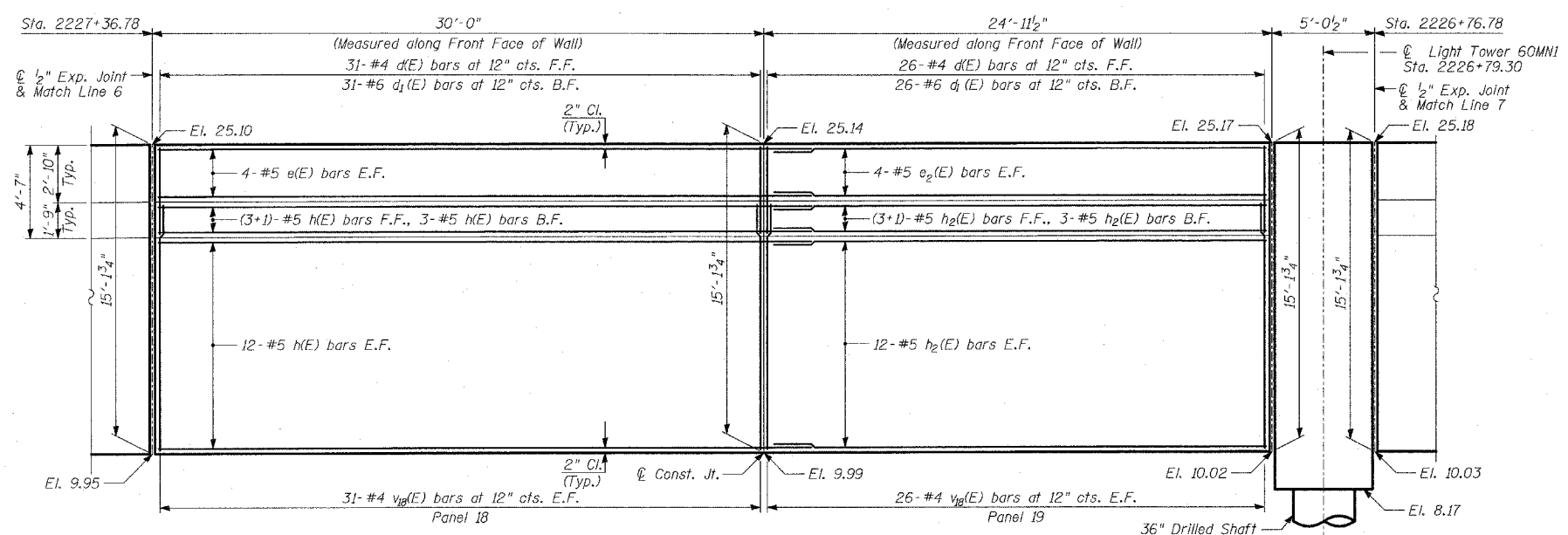
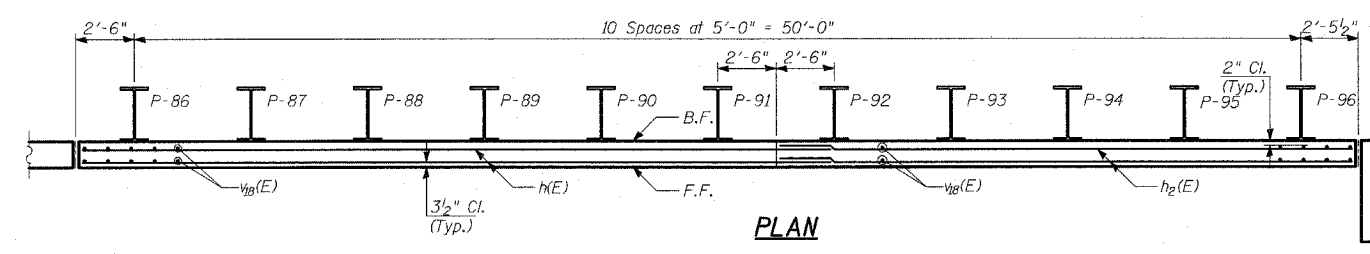


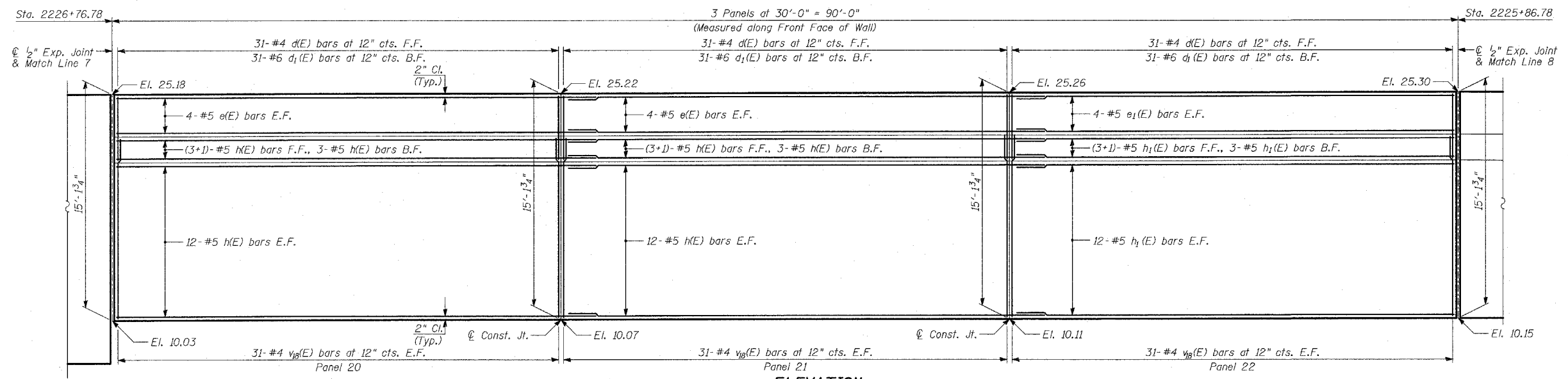
F.A.I. RTE.	SECTION	COUNTY	TOTAL SHEETS	SHEET NO.
94		COOK	860	455
STA. 2200+00.00 TO STA. 2362+00.00		ILLINOIS FED. AID PROJECT		
FED. ROAD DIST. NO.		(1516.1, 1717 & 1818) R-8		
				62694



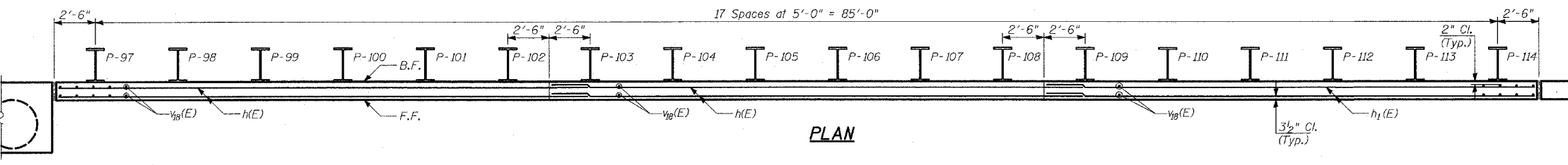
**ELEVATION**



**PLAN**



**ELEVATION**



**PLAN**

- NOTES:**
1. B.F. - denotes Back Face.
  2. E.F. - denotes Each Face.
  3. F.F. - denotes Front Face.
  4. Work this Sheet with Sheets 11 thru 24 of 33.
  5. Pile spacing measured along front face of wall.
  6. For Lap Splices, see Sheet 12 of 33.

REVISIONS	
NAME	DATE

ILLINOIS DEPARTMENT OF TRANSPORTATION  
 F.A.I. 94 (DAN RYAN EXPRESSWAY)  
 RETAINING WALL ALONG STATE ST.  
 93RD ST. TO 91ST ST.  
 WALL 2B - PLAN AND ELEVATION  
 STA. 2227+36.78 TO STA. 2225+86.78  
 S.N. 016-W961 DESIGNED BY: MI, DJR  
 SCALE: N.T.S. DRAWN BY: DJR, MAF  
 DATE: MARCH 18, 2005 CHECKED BY: TD, MI