

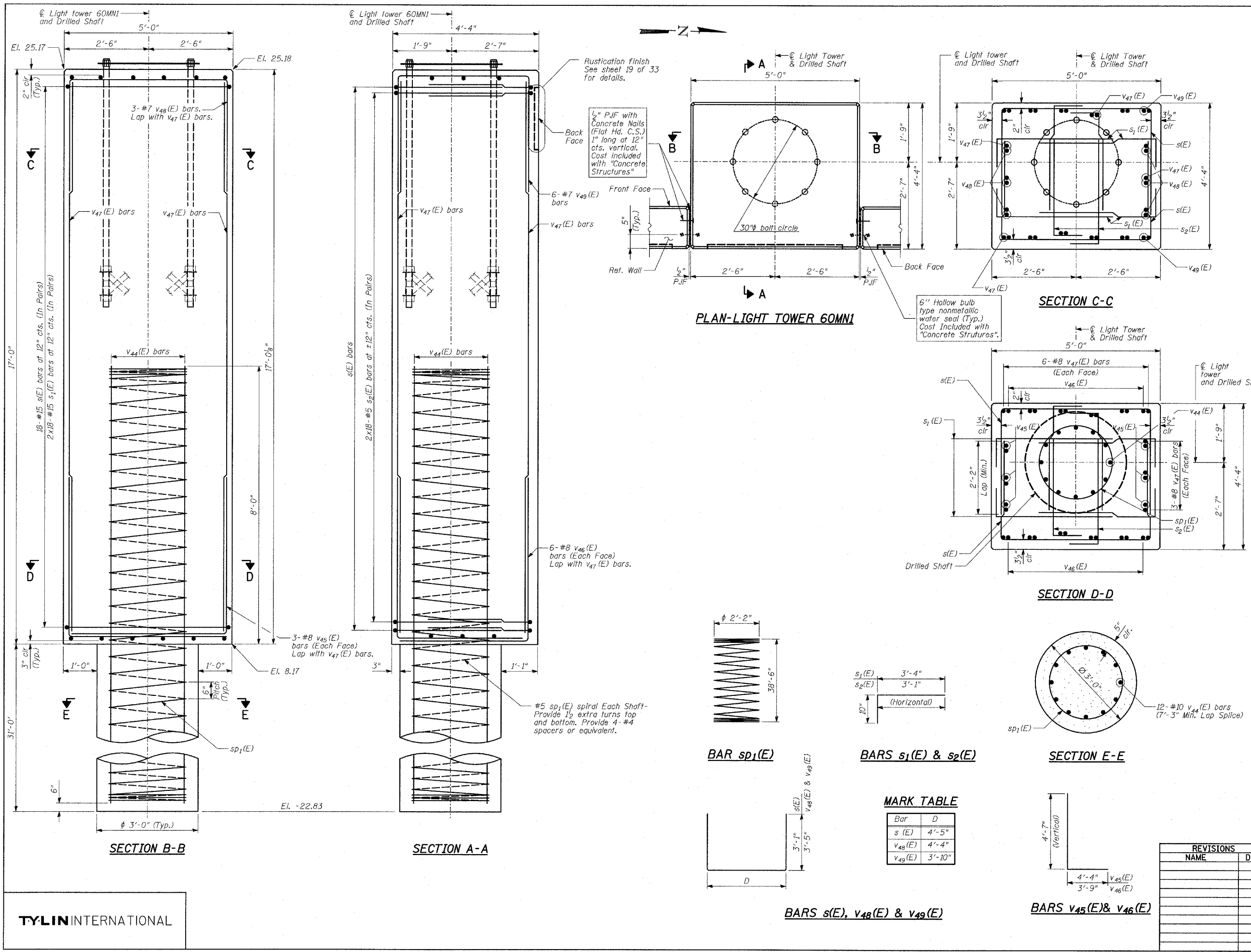
**BILL OF MATERIAL**

Bar	No.	Size	Length	Shape
s (E)	36	#5	10'-7"	□
s <sub>1</sub> (E)	72	#5	4'-2"	□
s <sub>2</sub> (E)	72	#5	3'-11"	□
sp <sub>1</sub> (E)	1	#5	38'-6"	
v <sub>44</sub> (E)	12	#10	38'-6"	—
v <sub>45</sub> (E)	6	#8	8'-11"	L
v <sub>46</sub> (E)	12	#8	8'-4"	L
v <sub>47</sub> (E)	18	#8	16'-6"	—
v <sub>48</sub> (E)	3	#7	11'-2"	□
v <sub>49</sub> (E)	6	#7	10'-8"	□
Reinforcement Bars, Epoxy Coated		POUND	4,970	
Structure Excavation		CU YD	13	
Concrete Structures		CU YD	14	
Protective Coat		SQ YD	21	
Rustication Finish		SQ FT	8	
Drilled Shaft in Soil 36"		FOOT	31	

Reinforcement bars designated (E) shall be epoxy coated.

**NOTES:**

- The design loads are based on AASHTO Standard Specifications for Structural Supports for Highway Signs, Luminares and Traffic Signals-2001.
- Drilled shafts shall be installed according to IDOT special provisions for "Drilled Shafts".
- Protective Coat shall be applied to exposed surfaces of the new concrete wall and tower base.
- At all locations where reinforcement bar laps are not in direct contact, the Contractor shall provide sufficient spacing between the vertical bars, equal to the size of the largest concrete aggregate plus 1/2 inch.
- For location of drilled shaft, see Sheet 6 of 33.
- Conduit is not shown for clarity. For location of conduit, see Sheet 16 of 33.
- Cost of anchor rod assembly, conduit and wires for grounding are included with "Concrete Structures".
- Minimum lap for spirals = 2'-6"



**MARK TABLE**

Bar	D
s (E)	4'-5"
v <sub>48</sub> (E)	4'-4"
v <sub>49</sub> (E)	3'-10"

REVISIONS	
NAME	DATE

ILLINOIS DEPARTMENT OF TRANSPORTATION  
**F.A.I. 94 (DAN RYAN EXPRESSWAY)**  
**RETAINING WALL ALONG STATE ST.**  
**93RD ST. TO 91ST ST.**  
**WALL 2B - LIGHT TOWER 60MNI**  
**FOUNDATION DETAILS**

S.N. 016-W961      DESIGNED BY: MI, DJR  
SCALE: N.T.S.      DRAWN BY: DJR, MAF  
DATE: MARCH 18, 2005      CHECKED BY: TD, MI