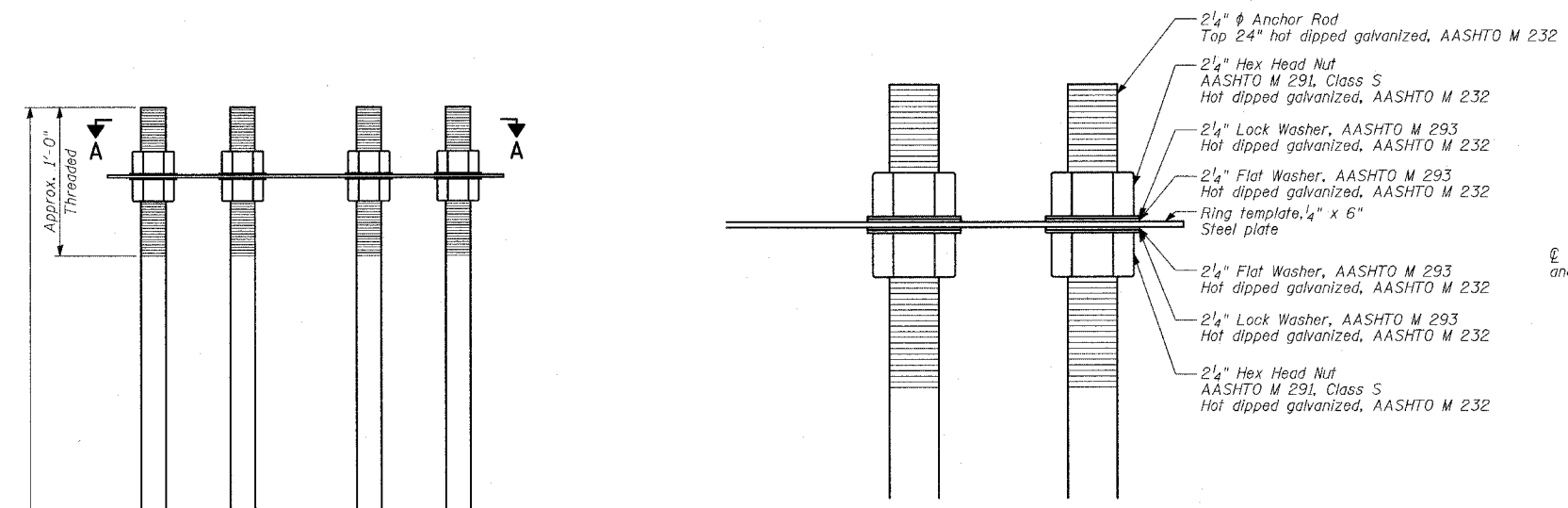
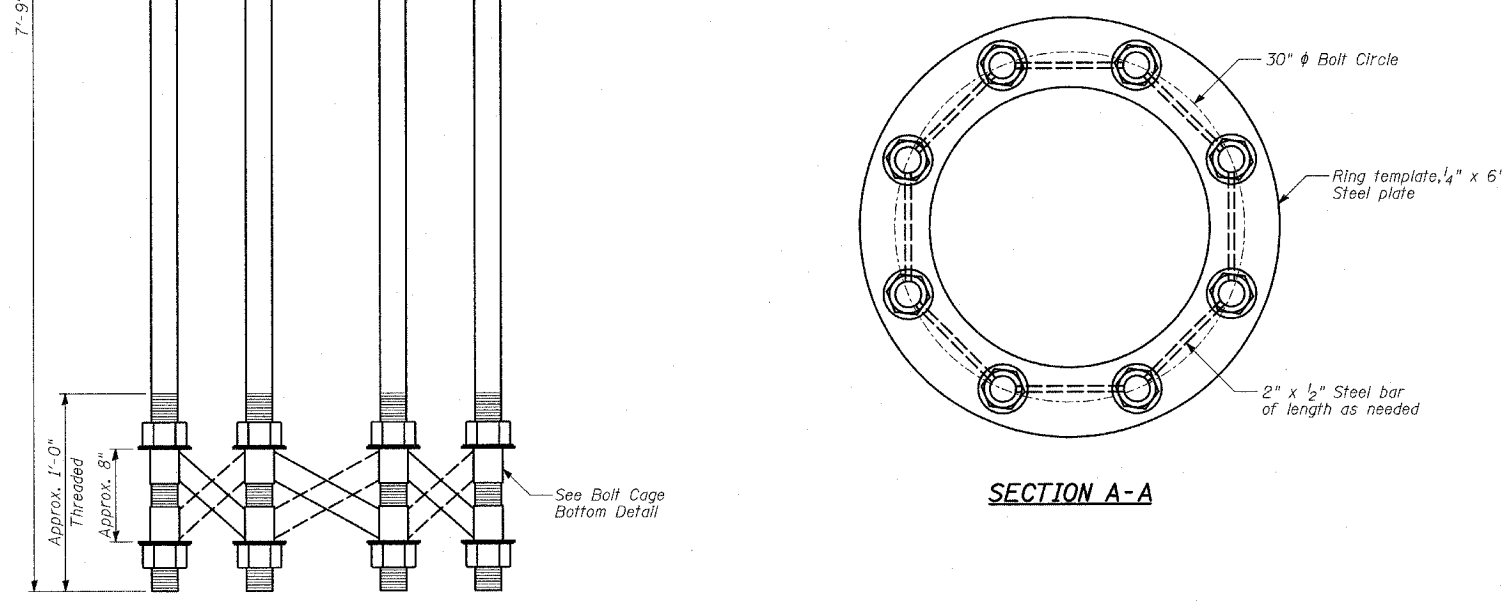


F.A.I. RTE.	SECTION	COUNTY	TOTAL SHEETS	SHEET NO.
94		COOK	860	465
STA. 2200+00.00		TO STA. 2362+00.00		
FED. ROAD DIST. NO.		ILLINOIS	FED. AID PROJECT	
		(1516.1, 1717 & 1818) R-8		62694

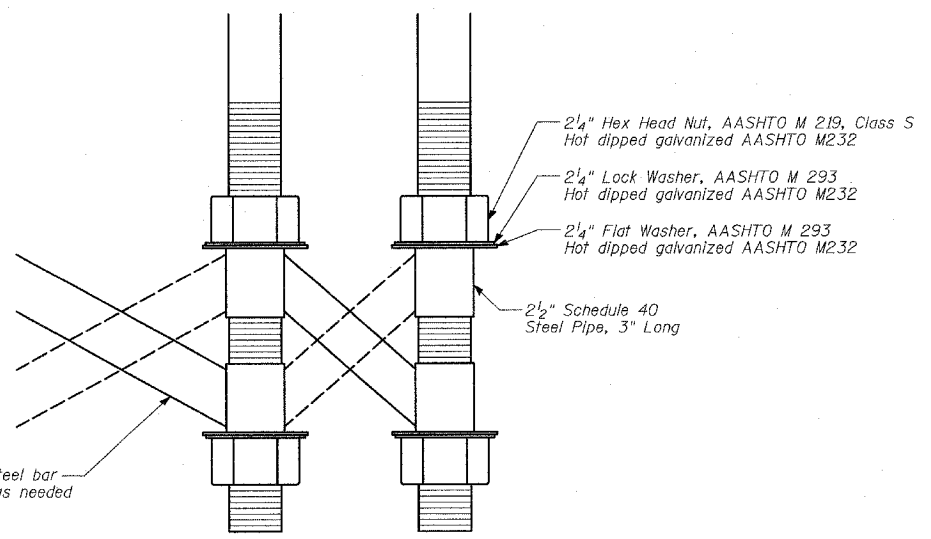


BOLT CAGE TOP

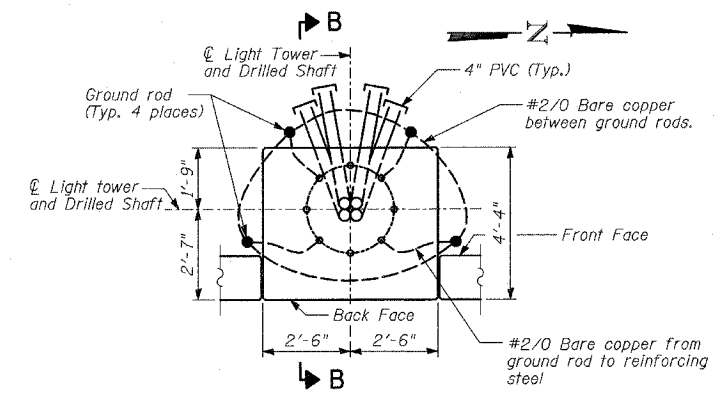


SECTION A-A

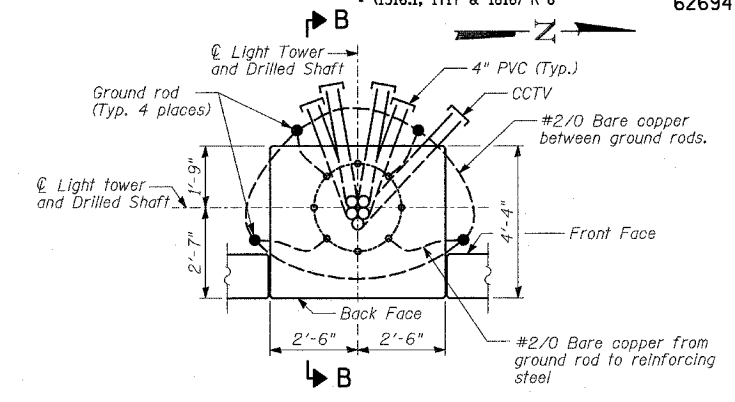
ANCHOR BOLT CAGE



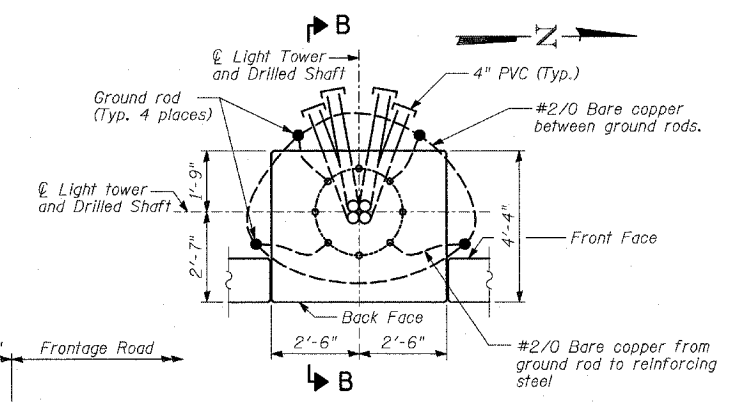
BOLT CAGE BOTTOM



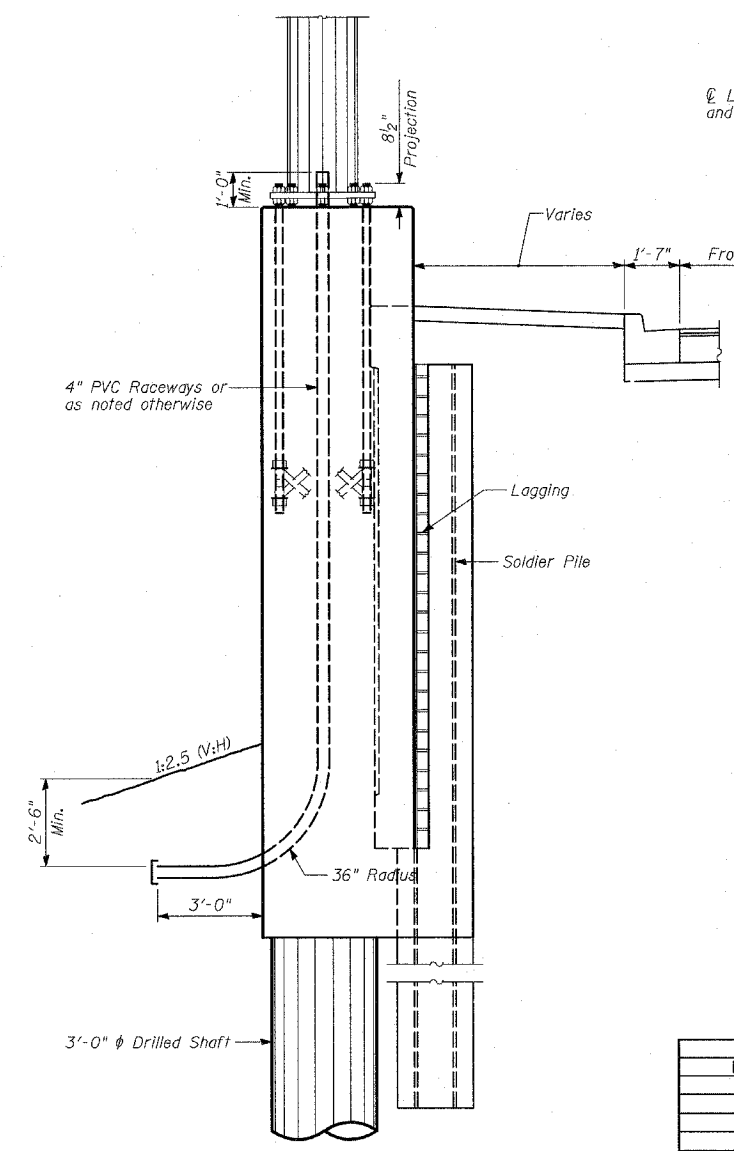
PLAN - 60MN2 CONDUIT PLACEMENT



PLAN - 60MN1 CONDUIT PLACEMENT



PLAN - 600P1 CONDUIT PLACEMENT



SECTION B-B

NOTES:

- Anchor rods shall be straight and shall be according to AASHTO M 314 or ASTM F1554, Grade 105 and galvanized according to Article 1006.09.
- Anchor rod information shall be submitted for approval and shall be fully coordinated with tower manufacturer's requirements.
- The Anchor Rods shall be vertical. No adjustment shall be allowed after the foundation is placed.
- The gap between the foundation and the base plate shall be enclosed with a stainless steel screen fastened with a stainless steel band.
- The Light Tower shall not be erected until after the concrete has been cured according to Article 1020.13.
- Two anchor rods opposite each other shall have the anchor rod threads peened after nuts are installed.
- Refer to BES01 for details.

REVISIONS	
NAME	DATE

ILLINOIS DEPARTMENT OF TRANSPORTATION
F.A.I. 94 (DAN RYAN EXPRESSWAY)
RETAINING WALL ALONG STATE ST.
93RD ST. TO 91ST ST.
WALL 2B
LIGHT TOWER DETAILS
 S.N. 016-W961 DESIGNED BY: MI, DJR
 SCALE: N.T.S. DRAWN BY: DJR, MAF
 DATE: MARCH 18, 2005 CHECKED BY: TD, MI