

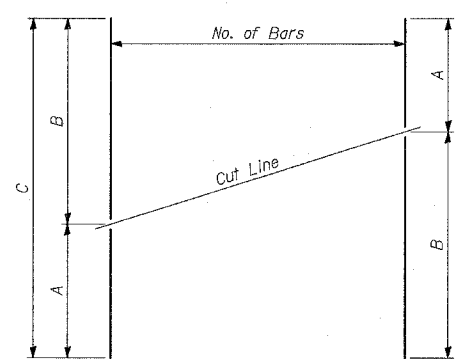
PILE LAYOUT

Pile	Station at Working Point	Top of Wall EL.	Top of Pile EL.	Bot. of Wall EL.	Section	Pile Tip EL.	Pile Length
P-1	2234+78.36	0.18	-1.82	-7.04	HP14x117	-27.07	25'-3"
P-2	2234+70.86	0.14	-1.86	-7.14		-27.20	25'-4"
P-3	2234+63.36	0.09	-1.91	-7.23		-27.24	25'-4"
P-4	2234+55.86	0.05	-1.95	-7.33		-27.37	25'-5"
P-5	2234+48.36	0.00	-2.00	-7.42		-27.50	25'-6"
P-6	2234+40.86	-0.04	-2.04	-7.52		-27.54	25'-6"
P-7	2234+32.86	-0.09	-2.09	-7.62		-27.67	25'-7"
P-8	2234+24.86	-0.14	-2.14	-7.72		-27.72	25'-7"
P-9	2234+16.86	-0.19	-2.19	-7.82		-27.85	25'-8"
P-10	2234+10.86	-0.22	-2.22	-7.90		-27.97	25'-9"
P-11	2234+03.36	-0.27	-2.27	-7.99		-28.02	25'-9"
P-12	2233+95.86	-0.31	-2.31	-8.09		-28.15	25'-10"
P-13	2233+88.36	-0.31	-2.31	-8.12		-28.14	25'-10"
P-14	2233+80.86	-0.25	-2.25	-8.08		-28.09	25'-10"
P-15	2233+73.36	-0.20	-2.20	-8.04		-28.12	25'-11"
P-16	2233+65.86	-0.15	-2.15	-8.01		-28.06	25'-11"
P-17	2233+58.36	-0.09	-2.09	-7.97		-28.01	25'-11"
P-18	2233+50.86	-0.04	-2.04	-7.94		-27.95	25'-11"
P-19	2233+43.36	0.02	-1.98	-7.90		-27.98	26'-0"
P-20	2233+33.86	0.09	-1.91	-7.86		-29.91	28'-0"
P-21	2233+23.69	0.16	-1.84	-7.81	HP14x117	-29.84	28'-0"

BILL OF MATERIAL

Bar	No.	Size	Length	Shape
d1(E)	9	#5	2'-3"	
d1(E)	9	#5	3'-9"	
h(E)	48	#5	32'-2"	
h1(E)	16	#5	29'-8"	
h2(E)	18	#5	27'-2"	
h3(E)	6	#5	8'-3"	
h4(E)	34	#5	18'-4"	
v(E)	62	#4	7'-0"	
v1(E)	31	#4	14'-5"	
v2(E)	62	#4	7'-5"	
v3(E)	113	#4	7'-7"	
v4(E)	38	#4	7'-8"	
Reinforcement Bars, Epoxy Coated			POUND	5,040
Concrete Removal			CU YD	1
Concrete Structures			CU YD	55
Protective Coat			SQ YD	139
Furnishing Soldier Piles (HP Section)			FOOT	544
Drilling and Setting Soldier Piles (in Soil)			CU FT	2,722

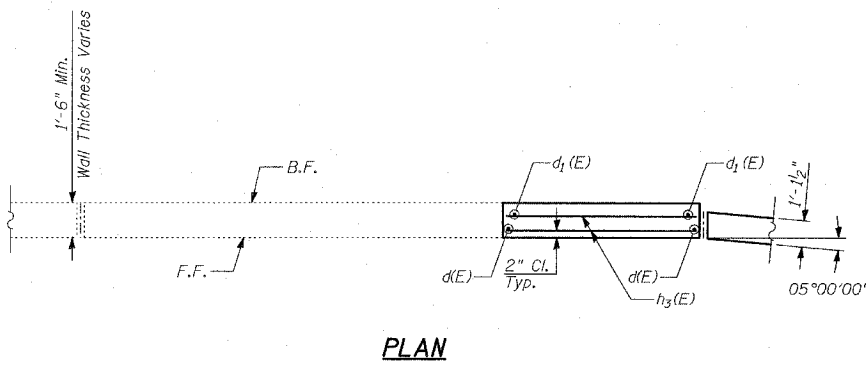
Reinforcement bars designated (E) shall be epoxy coated.



See table for dimensions. Make all cuts normal to bar axis.

BAR TABLE SCHEDULE

Bar	No. of Sets Req'd	No. of Bars Per Set	A	B	C
v1(E)	1	31	7'-1"	7'-4"	14'-5"



- NOTES:**
- Any vertical reinforcement bars that are damaged during concrete removal operations of the existing retaining wall shall be repaired or replaced using approved bar splicer or anchorage system. Cost included with "Concrete Removal".
 - Sand blast clean existing reinforcing bars to be incorporated into new construction. After cleaning, bars shall be evaluated to determine if additional reinforcing bars are required. Damaged or cut bars, or bars that have lost 25% or more of their original cross sectional area shall be supplemented by new in-kind reinforcement bars, to the approval of the Engineer. Cost included with "Concrete Removal".
 - Epoxy grout d1(E) bars in 9" min. drilled holes according to Section 584 of the Standard Specifications. Cost included with "Concrete Structures".

LAP SPLICES

Bar	Lap
#4	1'-8"
#5	2'-2"
#6	2'-7"
#8	4'-6"

REVISIONS

NAME	DATE

