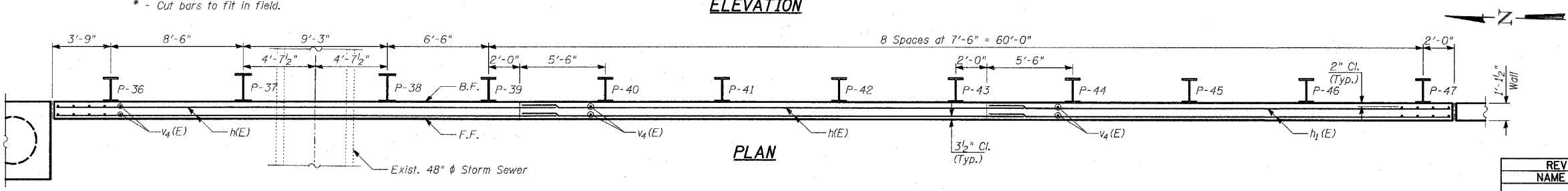
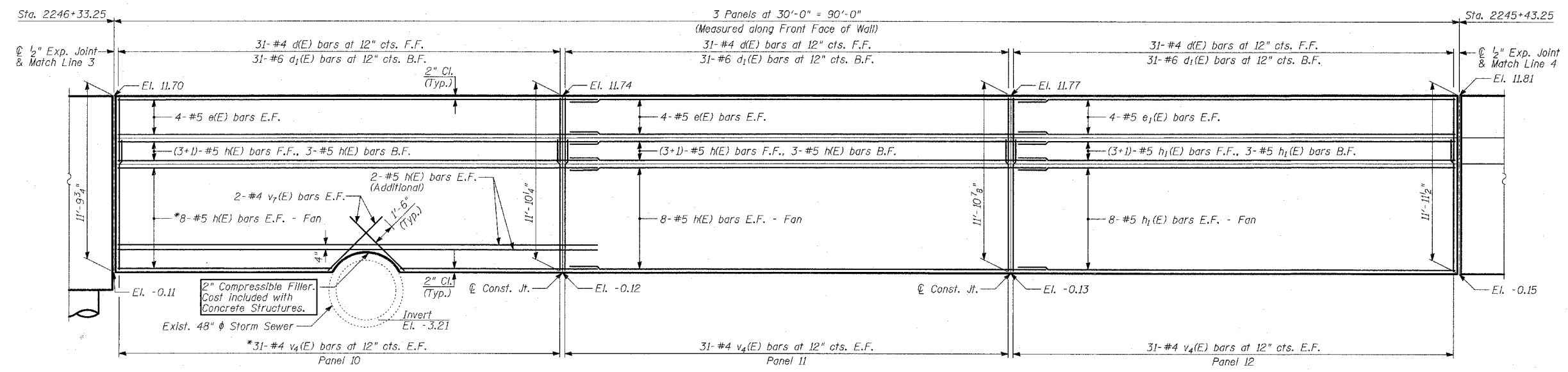
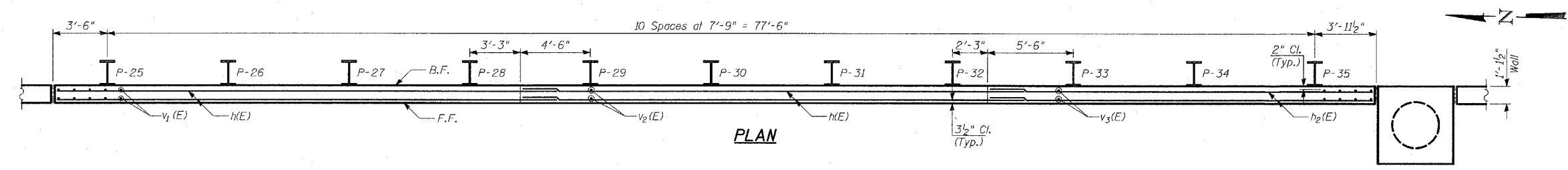
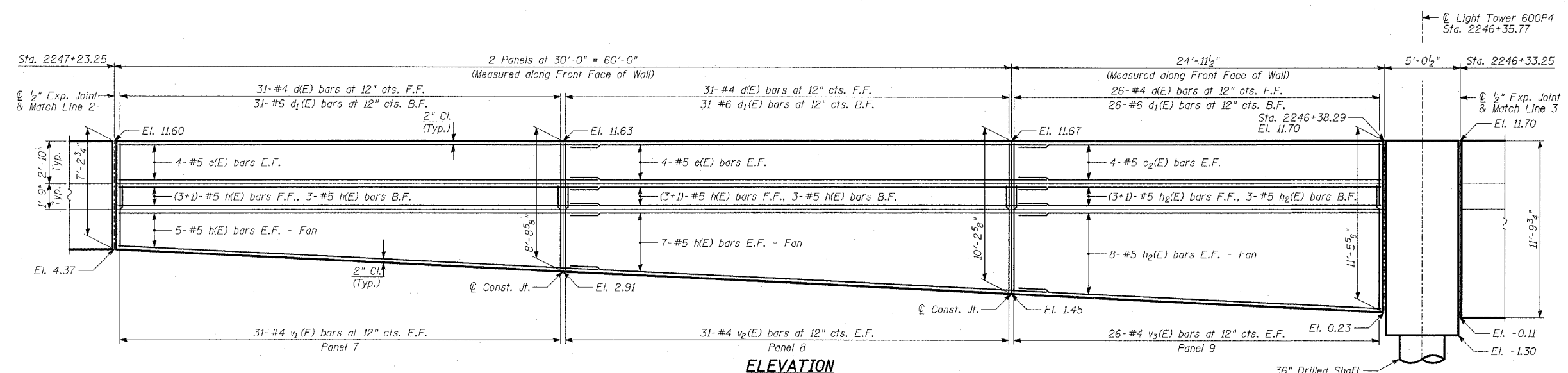


F.A.I. RTE.	SECTION	COUNTY	TOTAL SHEETS	SHEET NO.
94		COOK	860	500
STA. 2200+00.00 TO STA. 2362+00.00		ILLINOIS FED. AID PROJECT		
FED. ROAD DIST. NO.		• (1516.1, 1717 & 1818) R-8		
				62694



- NOTES:**
- B.F. - denotes Back Face.
 - E.F. - denotes Each Face.
 - F.F. - denotes Front Face.
 - Work this Sheet with Sheets 6 thru 15 of 20.
 - Pile spacing measured along front face of wall.
 - For Lap Splices, see Sheet 6 of 20.

REVISIONS	
NAME	DATE
REVISED	04/15/05

ILLINOIS DEPARTMENT OF TRANSPORTATION
F.A.I. 94 (DAN RYAN EXPRESSWAY)
RETAINING WALL ALONG STATE ST.
EXIT RAMP AT AIS #1
AIS 1 - PLAN AND ELEVATION
STA. 2247+23.25 TO STA. 2245+43.25
S.N. 016-W954 DESIGNED BY: MI, MAF
SCALE: N.T.S. DRAWN BY: MAF, DJR
DATE: MARCH 18, 2005 CHECKED BY: TD, MI

TYLIN INTERNATIONAL