

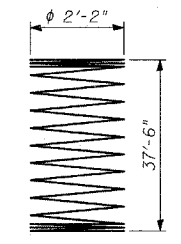
BILL OF MATERIAL

Bar	No.	Size	Length	Shape
s (E)	20	#5	10'-7"	□
s ₁ (E)	40	#5	4'-2"	□
s ₂ (E)	40	#5	3'-11"	□
sp (E)	1	#5	37'-6"	
v ₁₉ (E)	12	#10	37'-6"	—
v ₂₀ (E)	6	#8	12'-10"	L
v ₂₁ (E)	12	#8	12'-3"	L
v ₂₂ (E)	3	#7	11'-2"	L
v ₂₂ (E)	6	#7	10'-8"	L

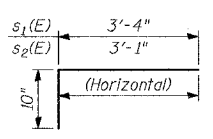
Item	Quantity	Unit	Weight
Reinforcement Bars, Epoxy Coated	3,850	POUND	
Structure Excavation	10	CU YD	
Concrete Structures	8	CU YD	
Protective Coat	9	SQ YD	
Rustication Finish	8	SQ FT	
Drilled Shaft in Soil 36"	30	FOOT	

Reinforcement bars designated (E) shall be epoxy coated.

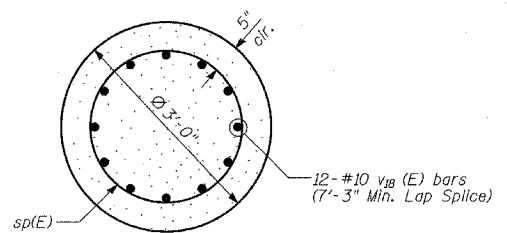
- NOTES:**
- The design loads are based on AASHTO Standard Specifications for Structural Supports for Highway Signs, Luminaires and Traffic Signals-2001.
 - Drilled shafts shall be installed according to IDOT special provisions for "Drilled Shafts".
 - Protective Coat shall be applied to exposed surfaces of the new concrete wall and tower base.
 - At all locations where reinforcement bar laps are not in direct contact, the Contractor shall provide sufficient spacing between the vertical bars, equal to the size of the largest concrete aggregate plus 1/2 inch.
 - For location of drilled shaft, see Sheet 5 of 23.
 - Conduit is not shown for clarity. For location of conduit, see Sheet 9 of 23.
 - Cost of anchor rod assembly, conduit and wires for grounding are included with "Concrete Structures".
 - Minimum lap for spirals = 2'-6"



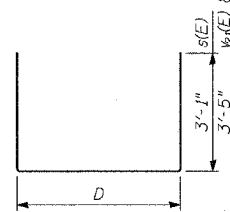
BAR sp(E)



BARS s₁(E) & s₂(E)



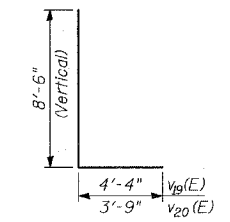
SECTION E-E



BARS s(E), v₂₁(E) & v₂₂(E)

MARK TABLE

Bar	D
s (E)	4'-5"
v ₂₁ (E)	4'-4"
v ₂₂ (E)	3'-10"



BARS v₁₉(E) & v₂₀(E)

REVISIONS	
NAME	DATE