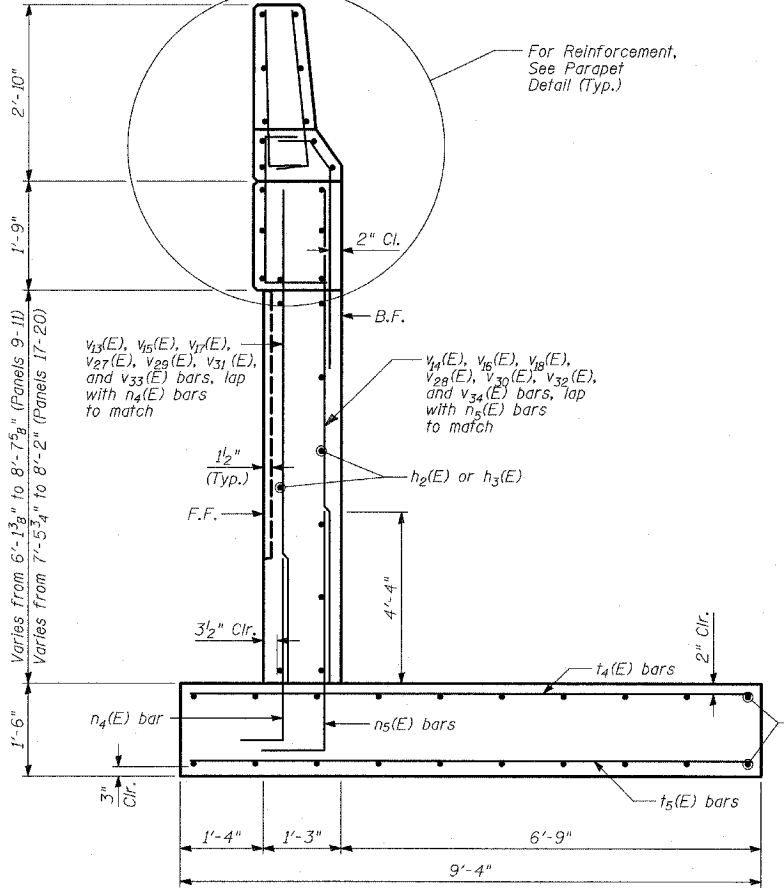
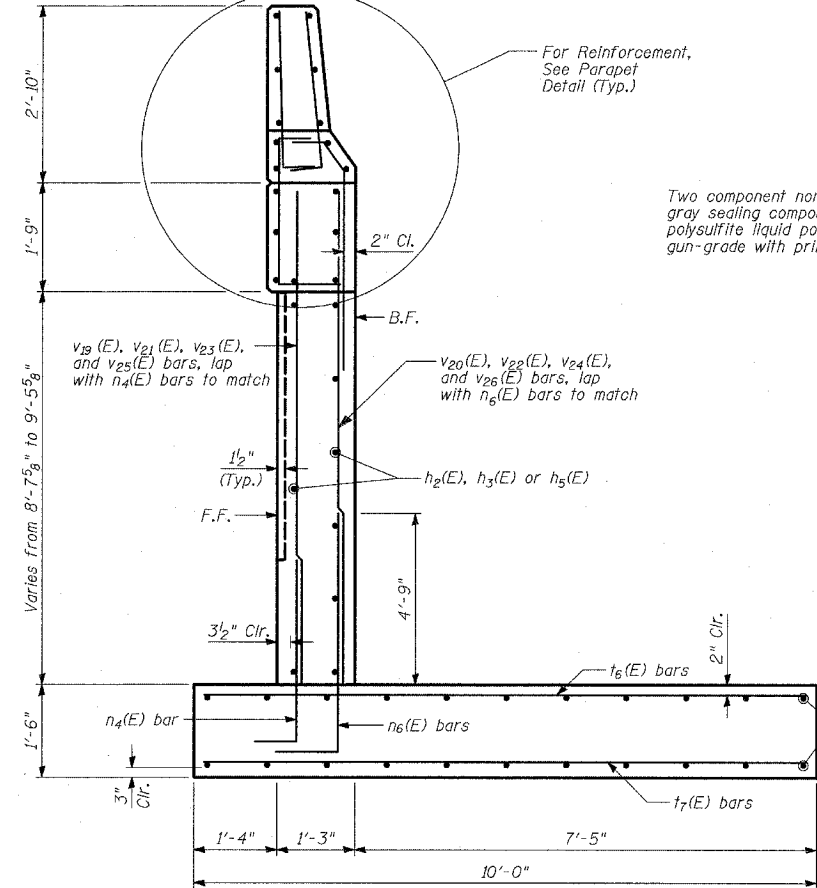


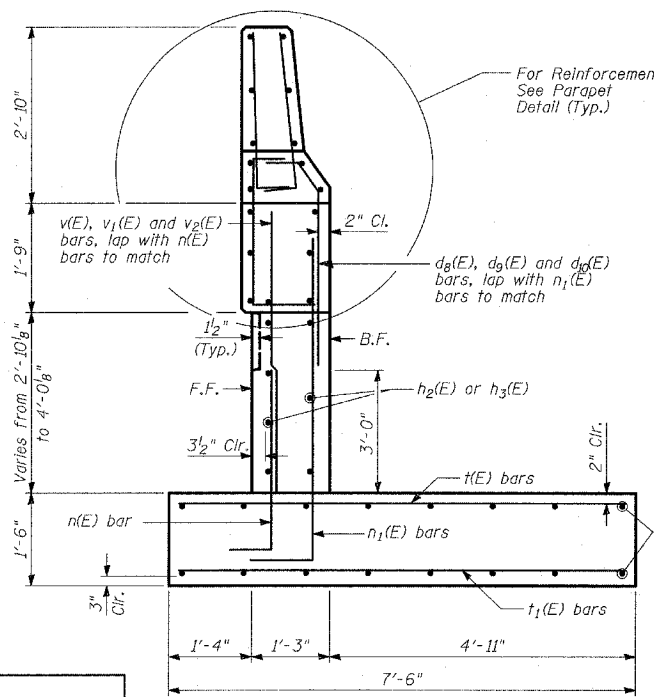
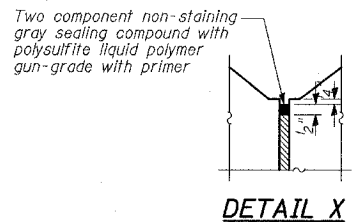
**SECTION B-B**  
(Sta. 2319+03.07 to Sta. 2317+54.39)



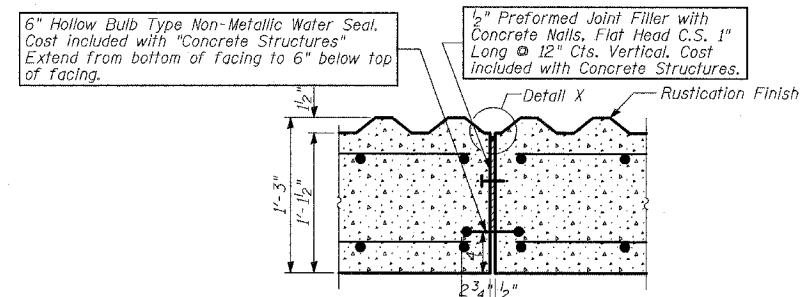
**SECTION C-C**  
(Sta. 2317+54.39 to Sta. 2316+65.14)  
(Sta. 2315+16.66 to Sta. 2313+98.58)



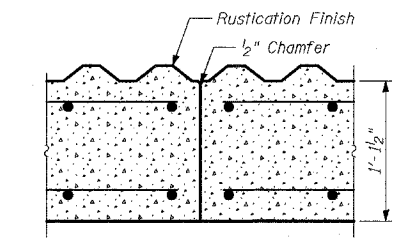
**SECTION D-D**  
(Sta. 2316+65.14 to Sta. 2315+21.63)



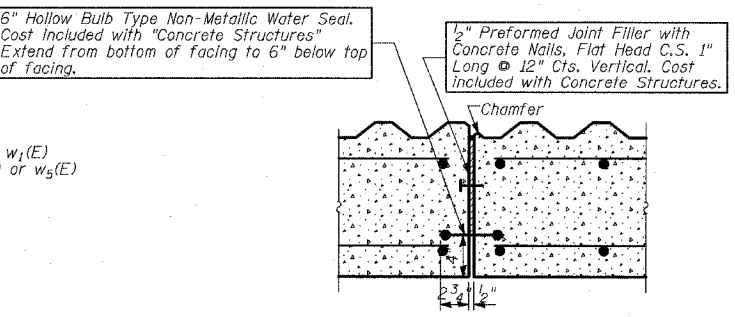
**SECTION A-A**  
(Sta. 2319+92.27 to Sta. 2319+03.07)



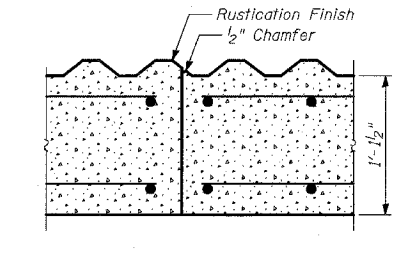
**EXPANSION JOINT DETAILS**  
(Joint in Valley)



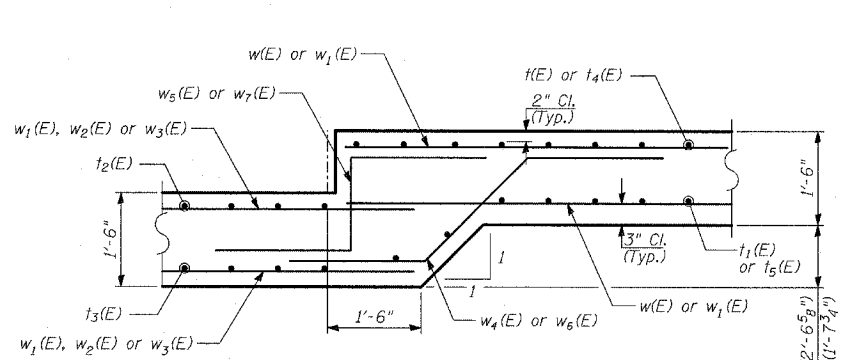
**CONSTRUCTION JOINT DETAILS**  
(Joint in Valley)



**EXPANSION JOINT DETAILS**  
(Joint on Diagonal)



**CONSTRUCTION JOINT DETAILS**  
(Joint in Diagonal)



**DETAIL 1 & 2**

**TYLIN INTERNATIONAL**

REVISIONS	
NAME	DATE

ILLINOIS DEPARTMENT OF TRANSPORTATION  
**F.A.I. 94 (DAN RYAN EXPRESSWAY)**  
**RETAINING WALL ALONG STATE ST.**  
**ENTRANCE RAMP AT 79TH ST.**  
**WALL 69 - WALL SECTIONS AND DETAILS**

S.N. 016-W975  
 SCALE: N.T.S.  
 DATE: MARCH 18, 2005

DESIGNED BY: MAF, SNB  
 DRAWN BY: MAF, SNB  
 CHECKED BY: TD, MI