

**BILL OF MATERIAL**

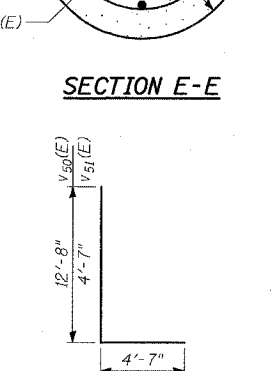
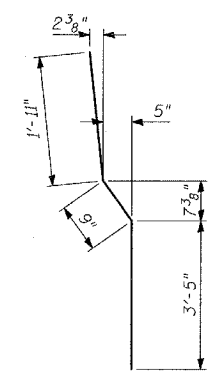
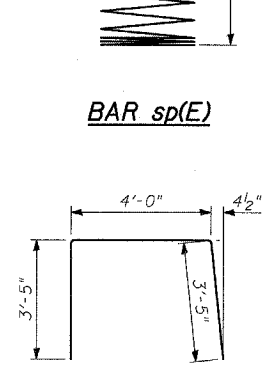
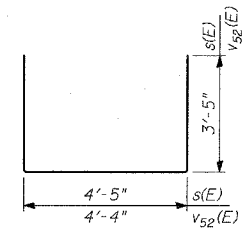
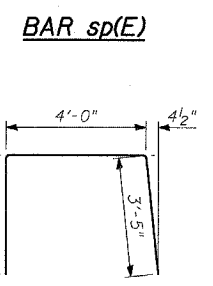
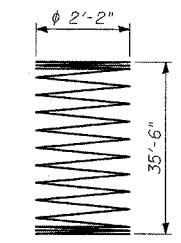
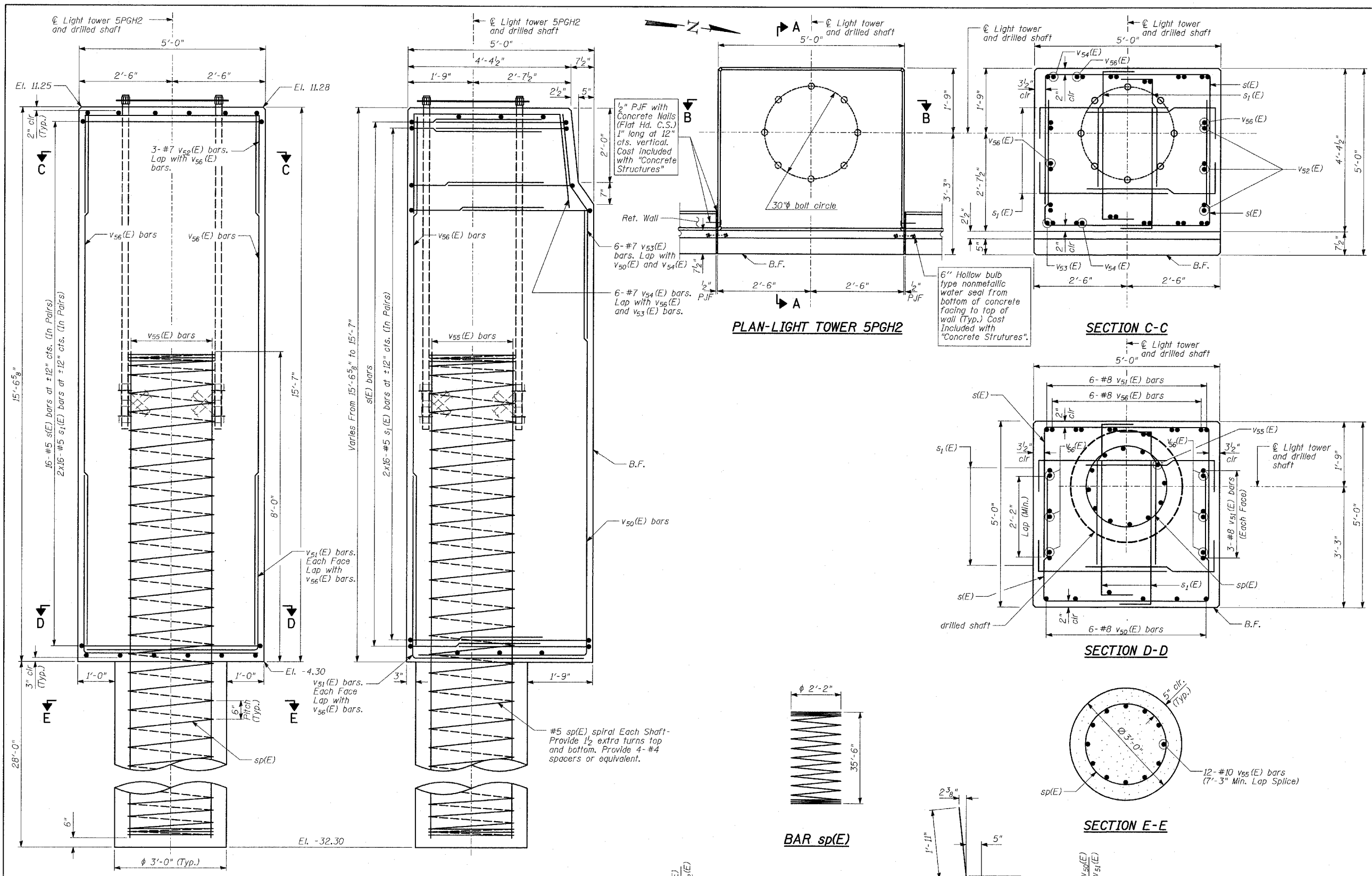
Bar	No.	Size	Length	Shape
s(E)	32	#5	11'-3"	┌
s <sub>1</sub> (E)	128	#5	4'-3"	┌
sp(E)	1	#5	35'-6"	
v <sub>50</sub> (E)	6	#8	17'-3"	┌
v <sub>51</sub> (E)	12	#8	9'-2"	┌
v <sub>52</sub> (E)	3	#7	11'-2"	┌
v <sub>53</sub> (E)	6	#7	6'-1"	┌
v <sub>54</sub> (E)	6	#7	10'-10"	┌
v <sub>55</sub> (E)	12	#10	35'-6"	┌
v <sub>56</sub> (E)	12	#8	15'-0"	┌

Reinforcement Bars, Epoxy Coated	POUND	4,630
Structure Excavation	CU YD	18
Concrete Structures	CU YD	15
Protective Coat	SQ YD	18
Drilled Shaft in Soil 36"	FOOT	28

Reinforcement bars designated (E) shall be epoxy coated.

**NOTES:**

- The design loads are based on AASHTO Standard Specifications for Structural Supports for Highway Signs, Luminaires and Traffic Signals-2001.
- Drilled shafts shall be installed according to IDOT special provisions for "Drilled Shafts".
- Protective Coat shall be applied to exposed surfaces of the new concrete wall and tower base.
- At all locations where reinforcement bar laps are not in direct contact, the Contractor shall provide sufficient spacing between the vertical bars, equal to the size of the largest concrete aggregate plus 1/2 inch.
- For location of drilled shaft, see Sheet 8 of 31.
- Conduit is not shown for clarity. For location of conduit, see Sheet 15 of 31.
- Cost of anchor rod assembly, conduit and wires for grounding are included with "Concrete Structures".
- Minimum lap for spirals = 2'-6"



REVISIONS	
NAME	DATE

ILLINOIS DEPARTMENT OF TRANSPORTATION  
**F.A.I. 94 (DAN RYAN EXPRESSWAY)**  
 SECTION (1717 & 1818) K COOK COUNTY  
**RETAINING WALL ALONG STATE ST. WALL 69**  
**LIGHT TOWER 5PGH2 FOUNDATION DETAILS**  
 S.N. 016-W975 DESIGNED BY: TD, MAF  
 SCALE: N.T.S. DRAWN BY: MAF, DJR  
 DATE: MARCH 18, 2005 CHECKED BY: TD, MI