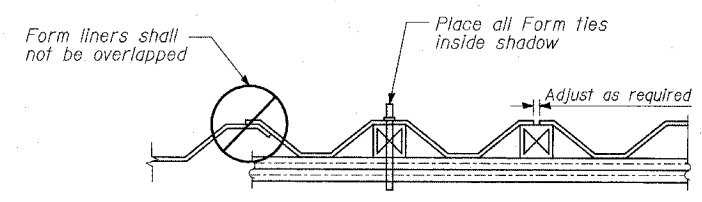
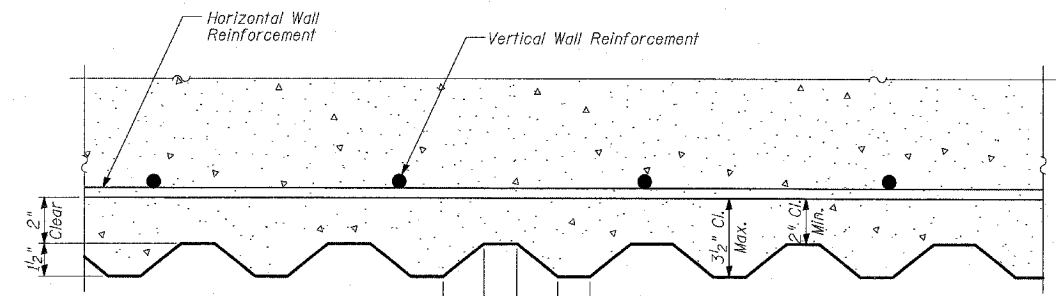


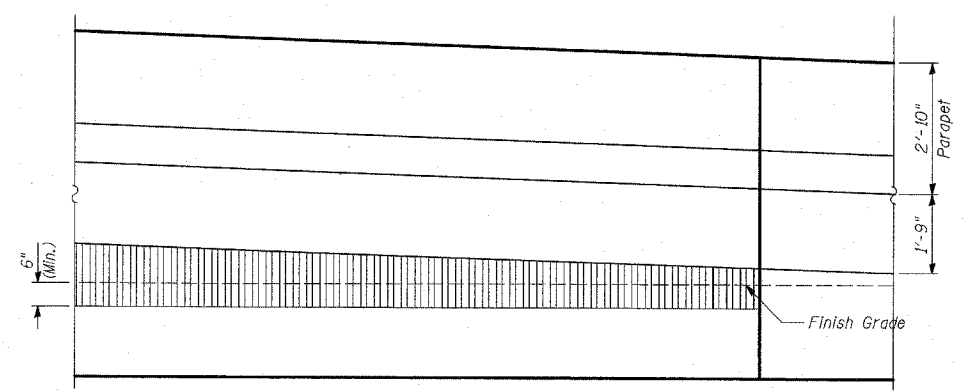
WALL DETAIL



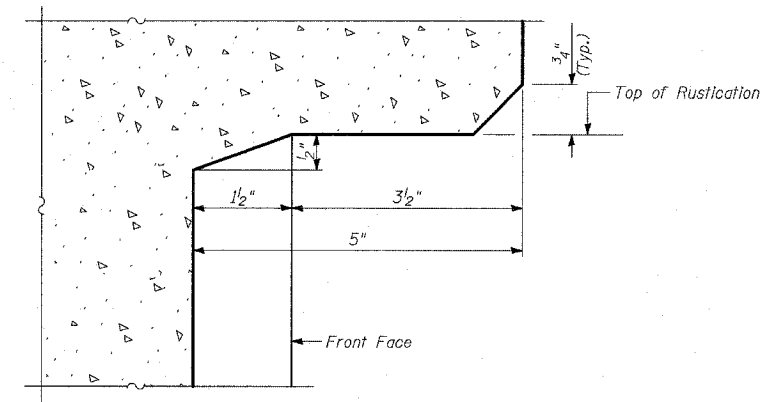
SUGGESTED FORMWORK DETAIL



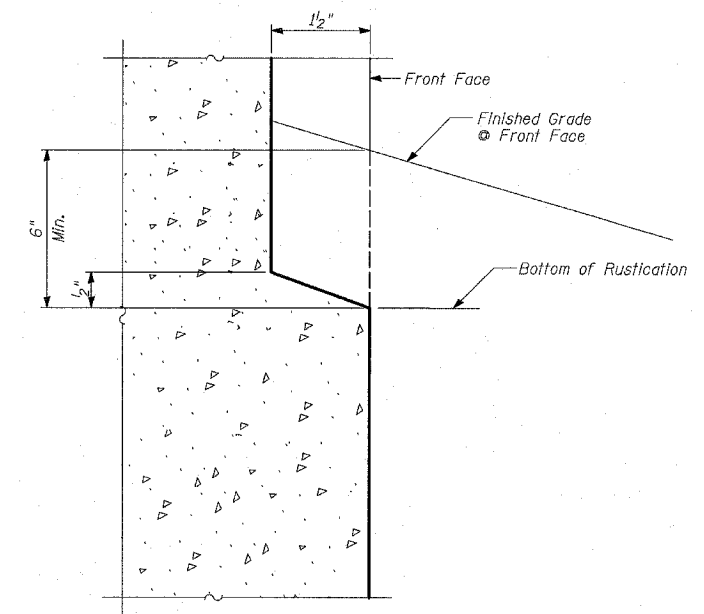
SECTION A-A



RUSTICATION DETAIL
(A1 Interior Panel with Embankment)



DETAIL A



DETAIL B

NOTES:
1. See Sheet 12 of 31 for expansion and construction joint details.

BILL OF MATERIAL

ITEM	UNIT	TOTAL
Rustication Finish	SQ FT	1,658

REVISIONS	
NAME	DATE

ILLINOIS DEPARTMENT OF TRANSPORTATION
F.A.I. 94 (DAN RYAN EXPRESSWAY)
RETAINING WALL ALONG STATE ST.
ENTRANCE RAMP AT 79TH ST.
WALL 69
RUSTICATION DETAILS
 S.N. 016-W975 DESIGNED BY: MI, DJR
 SCALE: N.T.S. DRAWN BY: DJR
 DATE: MARCH 18, 2005 CHECKED BY: TD, MI