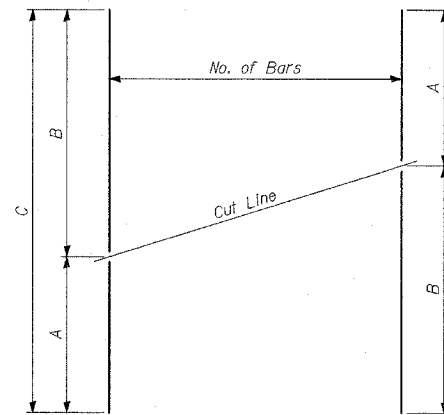


BAR TABLE SCHEDULE

Bar	No. of Sets Req'd	No. of Bars Per Set	A	B	C
V ₁₀ (E)	1	31	4'-10"	5'-2"	10'-0"
V ₁₁ (E)	1	31	5'-2"	5'-6"	10'-8"
V ₁₂ (E)	1	26	5'-6"	5'-9"	11'-3"
V ₁₃ (E)	1	31	5'-10"	6'-2"	12'-0"
V ₁₄ (E)	1	31	6'-2"	6'-6"	12'-8"
V ₁₅ (E)	1	31	6'-6"	6'-11"	13'-5"
V ₁₆ (E)	1	31	6'-11"	7'-3"	14'-2"
V ₁₇ (E)	1	31	7'-3"	7'-8"	14'-11"
V ₁₈ (E)	1	31	7'-8"	8'-0"	15'-8"
V ₁₉ (E)	1	31	8'-0"	8'-5"	16'-5"
V ₂₀ (E)	1	31	8'-5"	8'-9"	17'-2"
V ₂₁ (E)	1	31	8'-9"	9'-1"	17'-10"
V ₂₂ (E)	1	31	9'-1"	9'-6"	18'-7"
V ₂₃ (E)	1	31	9'-6"	9'-10"	19'-4"
V ₂₄ (E)	1	62	9'-10"	10'-4"	20'-2"
V ₂₉ (E)	1	31	10'-9"	10'-4"	21'-1"
V ₃₀ (E)	1	31	9'-10"	9'-4"	19'-2"
V ₃₁ (E)	1	31	9'-4"	8'-11"	18'-3"
V ₃₂ (E)	1	31	8'-11"	7'-10"	16'-9"
V ₃₃ (E)	1	31	7'-10"	6'-8"	14'-6"
V ₃₄ (E)	1	31	6'-8"	5'-7"	12'-3"
V ₃₅ (E)	1	31	5'-7"	4'-11"	10'-6"
V ₃₆ (E)	1	31	4'-11"	4'-3"	9'-2"
V ₃₇ (E)	1	31	4'-3"	3'-7"	7'-10"



SERIES OF BAR CUTTING DIAGRAM

See table for dimensions. Make all cuts normal to bar axis

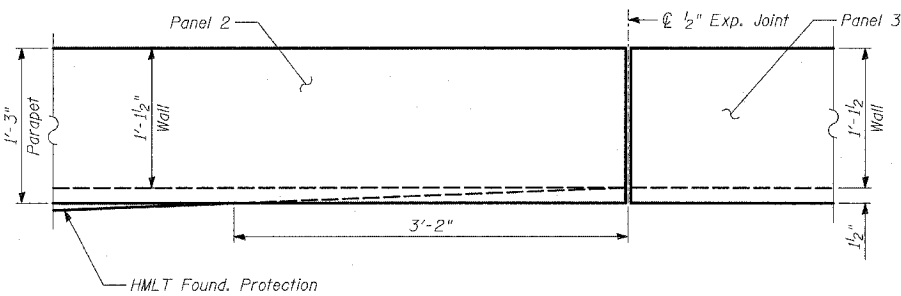
BILL OF MATERIAL

Bar	No.	Size	Length	Shape
d(E)	1199	#4	5'-3"	L
d ₁ (E)	1199	#6	6'-6"	—
d ₂ (E)	30	#5	3'-10"	└
d ₃ (E)	30	#5	4'-8"	└
o(E)	192	#5	32'-2"	—
o ₁ (E)	104	#5	29'-8"	—
o ₂ (E)	16	#5	24'-8"	—
h(E)	496	#5	32'-2"	—
h ₁ (E)	271	#5	29'-8"	—
h ₂ (E)	44	#5	24'-8"	—
h ₃ (E)	12	#5	37'-3"	—
h ₄ (E)	12	#5	26'-11"	—
v(E)	62	#4	3'-10"	—
v ₁ (E)	52	#4	4'-0"	—
v ₂ (E)	62	#4	4'-2"	—
v ₃ (E)	62	#4	4'-4"	—
v ₄ (E)	62	#4	4'-5"	—
v ₅ (E)	62	#4	4'-5"	—
v ₆ (E)	62	#4	4'-7"	—
v ₇ (E)	62	#4	4'-8"	—
v ₈ (E)	62	#4	4'-8"	—
v ₉ (E)	62	#4	4'-10"	—
v ₁₀ (E)	31	#4	10'-0"	—
v ₁₁ (E)	31	#4	10'-8"	—
v ₁₂ (E)	31	#4	11'-3"	—
v ₁₃ (E)	31	#4	12'-0"	—
v ₁₄ (E)	31	#4	12'-8"	—
v ₁₅ (E)	31	#4	13'-5"	—
v ₁₆ (E)	31	#4	14'-2"	—
v ₁₇ (E)	31	#4	14'-11"	—
v ₁₈ (E)	26	#4	15'-8"	—
v ₁₉ (E)	31	#4	16'-5"	—
v ₂₀ (E)	31	#4	17'-2"	—
v ₂₁ (E)	31	#4	17'-10"	—
v ₂₂ (E)	31	#4	18'-7"	—
v ₂₃ (E)	31	#4	19'-4"	—
v ₂₄ (E)	62	#4	20'-2"	—

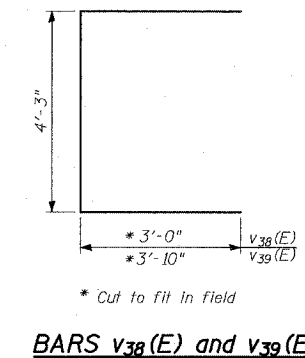
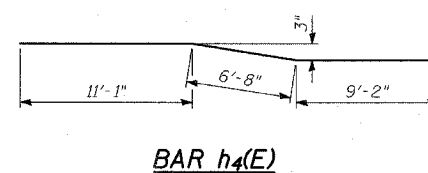
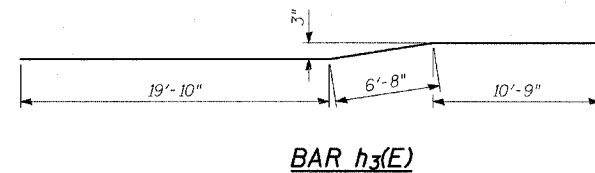
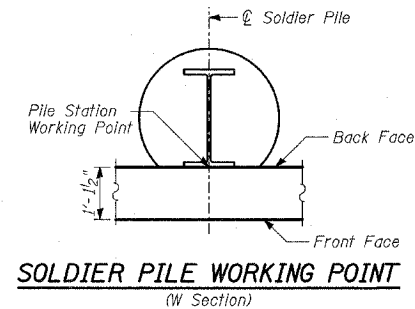
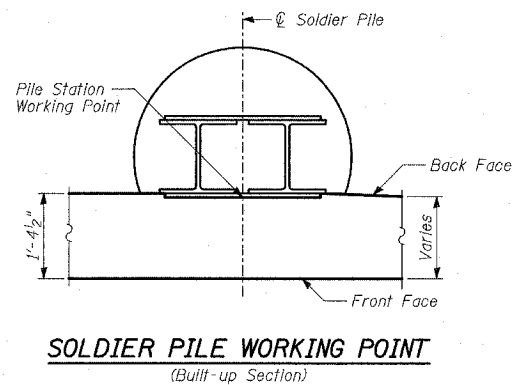
Bar	No.	Size	Length	Shape
v ₂₅ (E)	62	#4	10'-5"	—
v ₂₆ (E)	62	#4	10'-6"	—
v ₂₇ (E)	62	#4	6'-1"	—
v ₂₈ (E)	62	#4	6'-2"	—
v ₂₉ (E)	31	#4	21'-1"	—
v ₃₀ (E)	31	#4	19'-2"	—
v ₃₁ (E)	31	#4	18'-3"	—
v ₃₂ (E)	31	#4	16'-9"	—
v ₃₃ (E)	31	#4	14'-6"	—
v ₃₄ (E)	31	#4	12'-3"	—
v ₃₅ (E)	31	#4	10'-6"	—
v ₃₆ (E)	31	#4	9'-2"	—
v ₃₇ (E)	31	#4	7'-10"	—
v ₃₈ (E)	61	#5	10'-3"	L
v ₃₉ (E)	61	#5	11'-11"	L
v ₄₀ (E)	124	#4	6'-2"	—

	POUND	CU YD	SQ YD	FOOT	CU FT
Reinforcement Bars, Epoxy Coated	67,350				
Concrete Structures		544			
Protective Coat			1,592		
Furnishing Soldier Piles (HP Section)				1,398	
Furnishing Soldier Piles (Built-up Section)				69	
Furnishing Soldier Piles (W Section)				3,824	
Drilling and Setting Soldier Piles (in Soil)					30,056

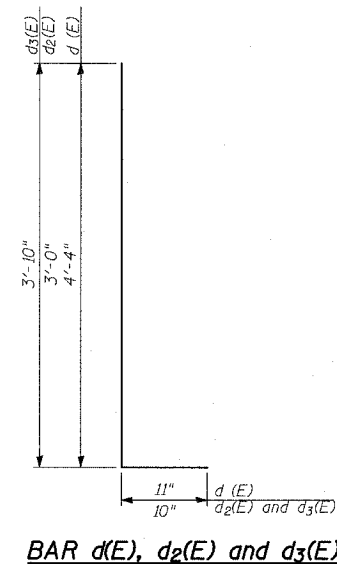
Reinforcement bars designated (E) shall be epoxy coated.



DETAIL 1
(For SRMNS only)



BARS v₃₈(E) and v₃₉(E)



BAR d(E), d₂(E) and d₃(E)

TYLIN INTERNATIONAL

LAP SPLICES

Bar	Lap
#4	1'-8"
#5	2'-2"
#6	2'-7"
#8	4'-6"

REVISIONS	
NAME	DATE
REVISED	04/15/05

ILLINOIS DEPARTMENT OF TRANSPORTATION
F.A.I. 94 (DAN RYAN EXPRESSWAY)
RETAINING WALL ALONG STATE ST.
77TH ST. TO 78TH ST.
WALL TO
PILE LAYOUT, DETAILS & BILL OF MATERIAL
 S.N. 016-W976
 SCALE: N.T.S.
 DATE: MARCH 18, 2005

DESIGNED BY: MI, MAF
 DRAWN BY: MAF, DJR
 CHECKED BY: TD, MI