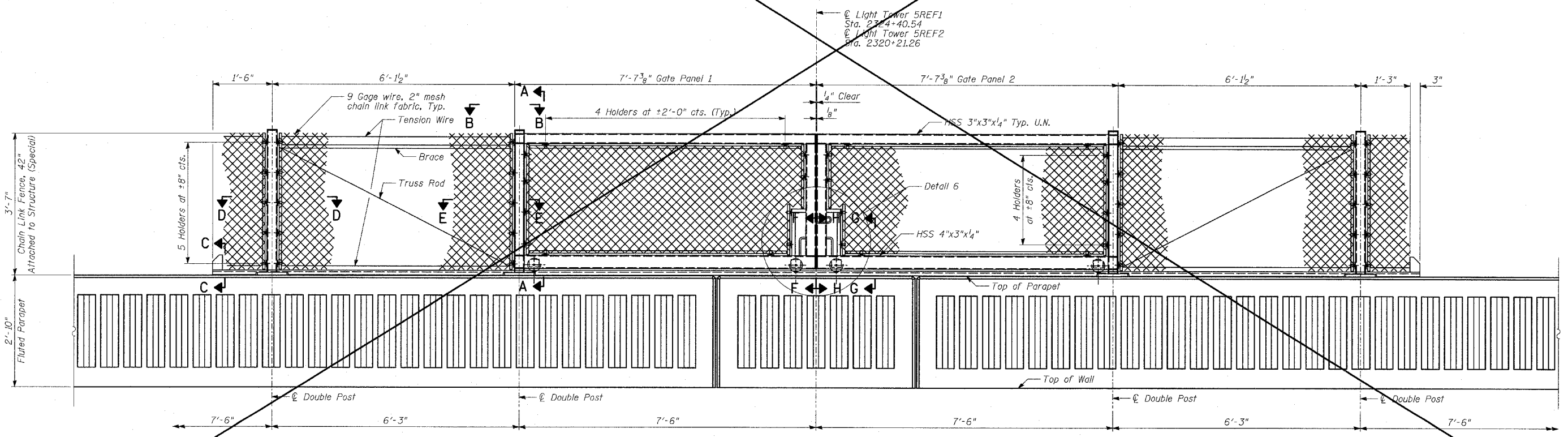


BACK FACE ELEVATION - GATE IN OPEN POSITION



BACK FACE ELEVATION - GATE IN CLOSED POSITION

- NOTES:**
1. For notes, see Sheet 24 of 36.
 2. For Sections A-A, B-B, D-D & E-E, see Sheet 26 of 36.
 3. For Sections C-C, F-F, G-G, H-H, J-J and Details 4, 5, 6 & 7, see Sheet 27 of 36.

REVISIONS	
NAME	DATE

SHEET 25 OF 36

ILLINOIS DEPARTMENT OF TRANSPORTATION
F.A.I. 94 (DAN RYAN EXPRESSWAY)
RETAINING WALL ALONG STATE ST.
77TH ST. TO 78TH ST.
WALL TO
GATE ELEVATIONS

S.N. 016-W976 DESIGNED BY: MJ, DJR
 SCALE: N.T.S. DRAWN BY: DJR, SB
 DATE: MARCH 18, 2005 CHECKED BY: TD, MI