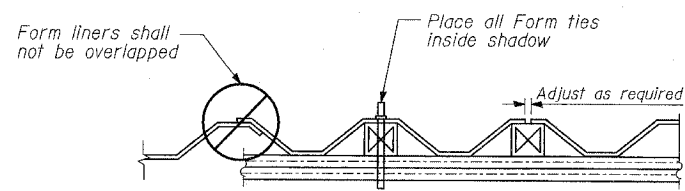
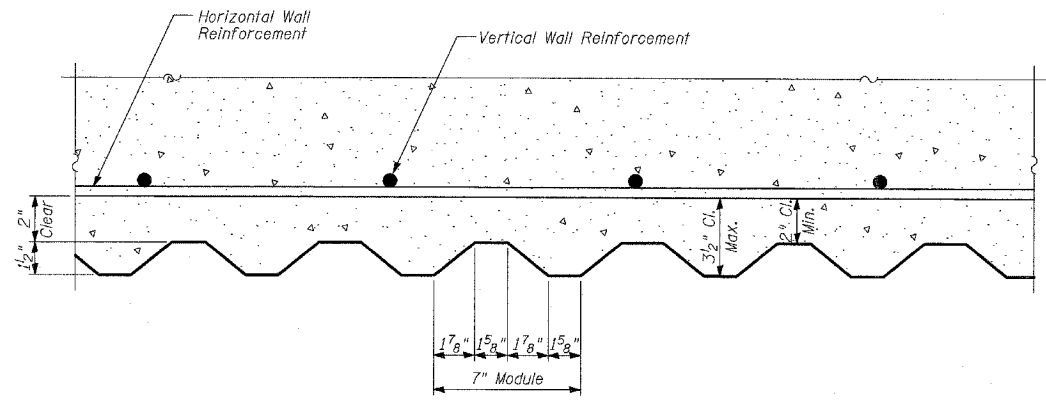


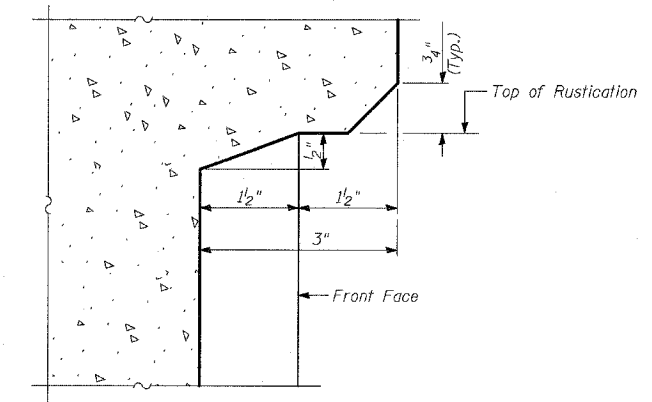
**WALL DETAIL**



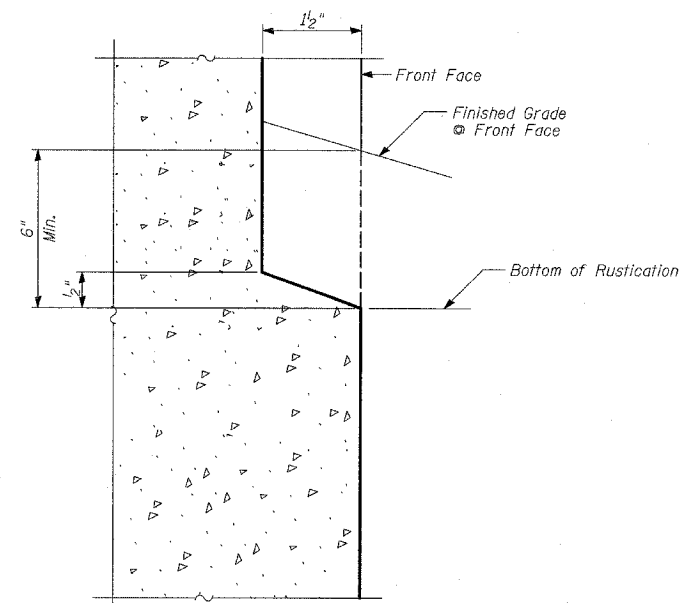
**SUGGESTED FORMWORK DETAIL**



**SECTION A-A**

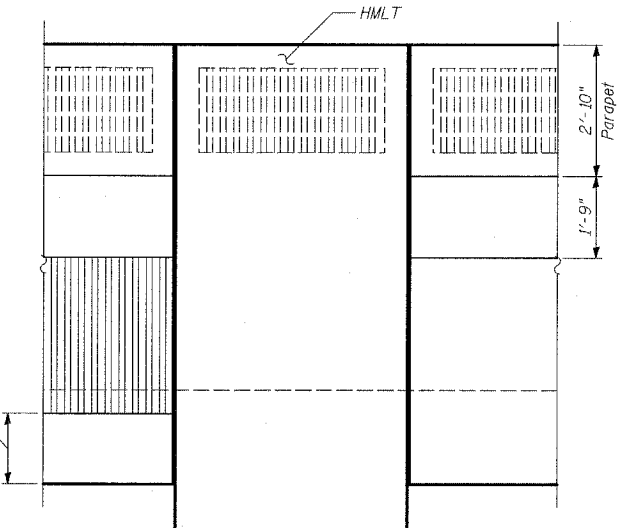


**DETAIL A**

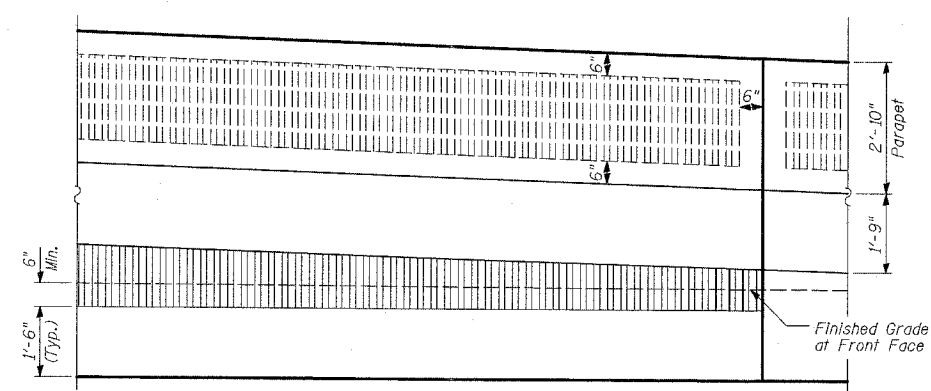


**DETAIL B**

No Rustication for Light Tower 6R0P2  
1'-6" - For Light Tower 6R0P1



**RUSTICATION DETAIL**  
(At HMLT with Embankment)



**RUSTICATION DETAIL**  
(At End Panel with Embankment)

**BILL OF MATERIAL**

ITEM	UNIT	TOTAL
Rustication Finish	SQ FT	2,299

**NOTES**

- See Sheet 9 of 21 for expansion and construction joint details.

REVISIONS	
NAME	DATE

ILLINOIS DEPARTMENT OF TRANSPORTATION  
 F.A.I. 94 (DAN RYAN EXPRESSWAY)  
 RETAINING WALL ALONG STATE ST.  
 EXIT RAMP AT AIS #2  
 AIS #2  
 RUSTICATION DETAILS  
 S.N. 016-W940  
 SCALE: N.T.S.  
 DATE: MARCH 18, 2005  
 DESIGNED BY: MI, DJR  
 DRAWN BY: DJR, MAF  
 CHECKED BY: TD, MI