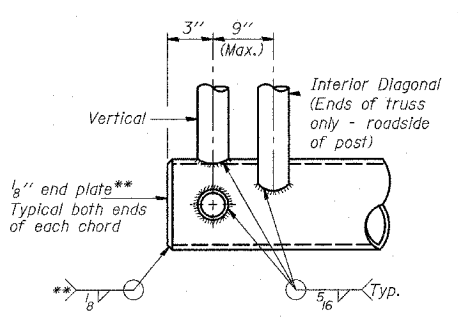
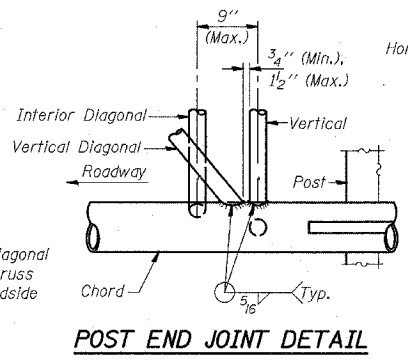


Structure Number	Station	Truss Type	Design Length (L)	Number of Panels Per Unit	Panel Length (P)*
IC0161094L062.4	2228+81	III-C-A	40'	8	4.75'

Note: There are twice as many horizontal diagonals as there are vertical diagonals.



\*\*Contractor may alternatively use standard aluminum drive-fit cap to close ends.

**SHOP CAMBER TABLE**

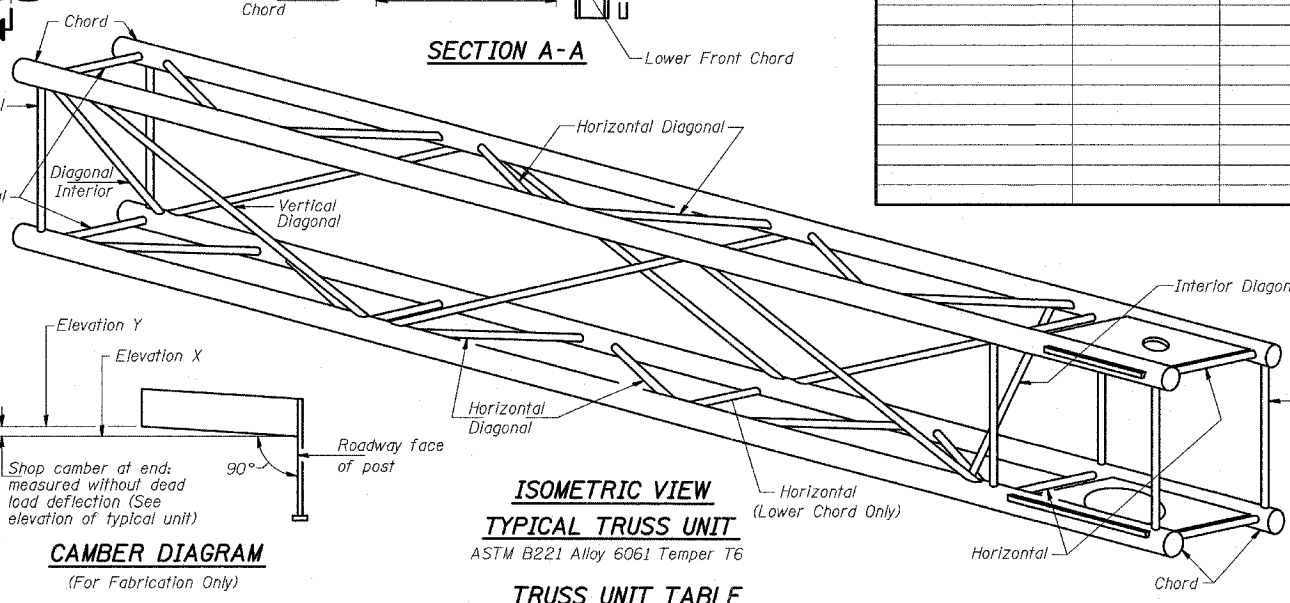
Unit Length (L)	Shop Camber at End
15'	1 1/2"
16'-17'	1 3/4"
18'-20'	2"
21'-22'	2 1/4"
23'-25'	2 1/2"
26'-27'	2 3/4"
28'-30'	3"
31'-32'	3 1/4"
33'-35'	3 1/2"
36'-37'	4"
38'-40'	4 1/2"

**CAMBER DIAGRAM**  
(For Fabrication Only)

90°

Roadway face of post

**ISOMETRIC VIEW**  
**TYPICAL TRUSS UNIT**  
ASTM B221 Alloy 6061 Temper T6



**TRUSS UNIT TABLE**

Truss Type	Dimension "a"	Dimension "b"	Dimension "s"	Limits for Panel Spacing (P)*	Up. & Low. Chord		Verticals; Horizontals; Vertical, Horizontal, and Interior Diagonals	
					O.D.	Wall	O.D.	Wall
I-C-A	24"	54"	16"	36" Min. to 48" Max.	5"	5/16"	2 1/2"	5/16"
II-C-A	36"	66"	21"	42" Min. to 54" Max.	6 1/2"	5/16"	3 1/4"	5/16"
III-C-A (35' Max.)	36"	84"	21"	48" Min. to 66" Max.	7"	3/8"	3 1/2"	3/8"
III-C-A (>35' to 40')	36"	84"	21"	48" Min. to 66" Max.	8"	3/8"	3 1/2"	3/8"

\*P = (L - s - 3") / # Panels

NUMBER	REVISION	DATE

OSC-A-2 11/1/2002

REVISIONS	
NAME	DATE

ILLINOIS DEPARTMENT OF TRANSPORTATION  
F.A.I. 94 (DAN RYAN EXPRESSWAY)  
CANTILEVER SIGN STRUCTURES  
TRUSS DETAILS  
ALUMINUM TRUSS & STEEL POST

SCALE: AS NOTED DRAWN BY: AMB  
DATE: MARCH 18, 2005 CHECKED BY: TB