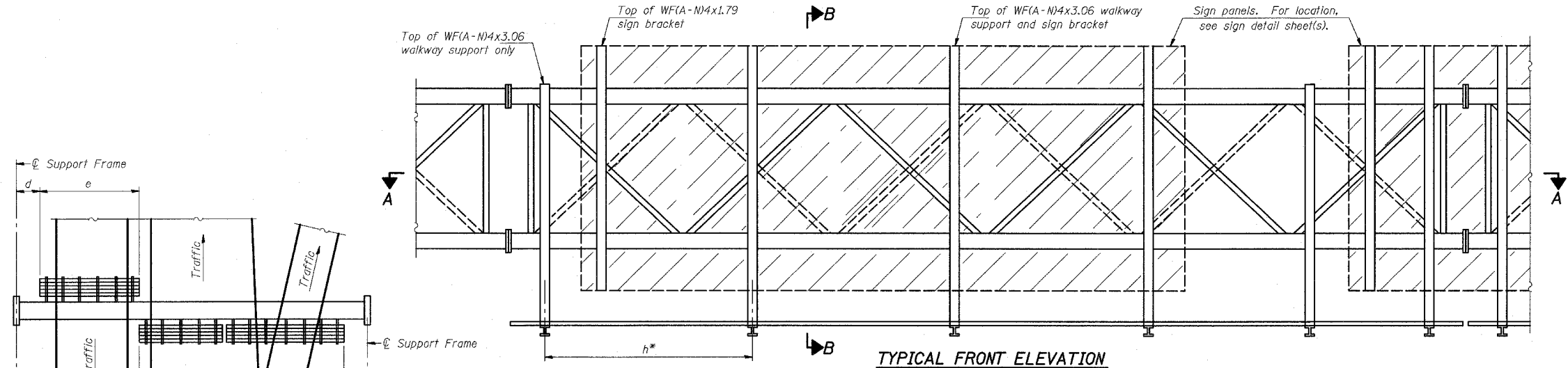
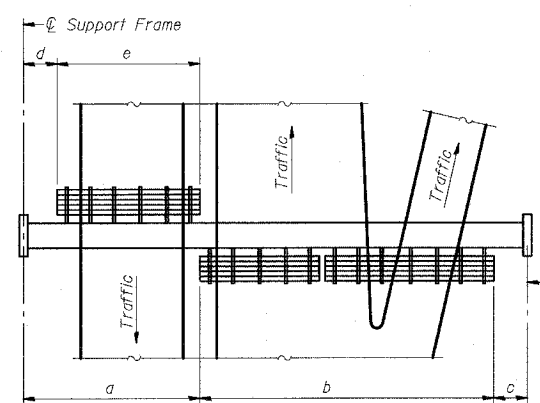


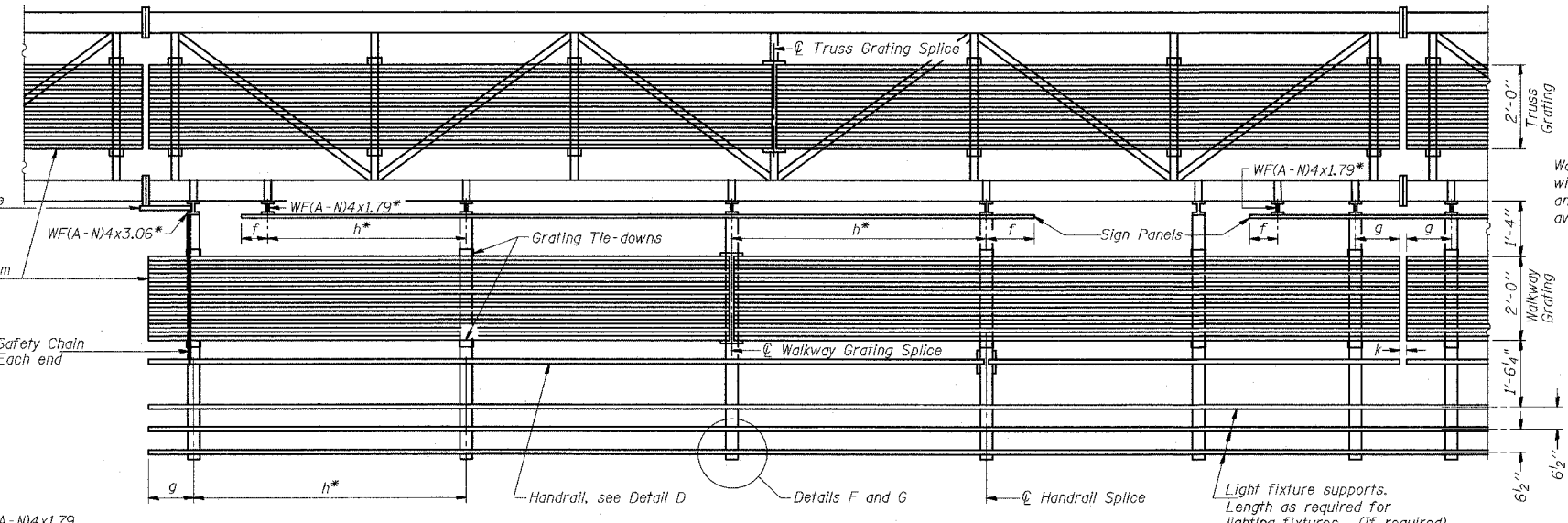
STATE OF ILLINOIS  
DEPARTMENT OF TRANSPORTATION



**TYPICAL FRONT ELEVATION**  
With lights and handrail omitted for clarity.  
For Section B-B, see Base Sheet OS-A-10.



**PLAN WALKWAY AND HANDRAIL SKETCH**  
(Road plan beneath truss varies)



Walkway and Truss Grating width dimensions are nominal and may vary  $\pm 1/2$ " based on available standard widths.

**BRACKET TABLE**

Sign Width		Number Brackets Required
Greater Than	Less Than or Equal To	
	8'-0"	2
8'-0"	14'-0"	3
14'-0"	20'-0"	4
20'-0"	26'-0"	5
26'-0"	32'-0"	6

Notes: \*Space walkway brackets WFA-N4x3.06 and sign brackets WFA-N4x1.79 for efficiency and within limits shown:

- f = 12" maximum, 4" minimum (End of sign to  $\phi$  of nearest bracket)
- g = 12" maximum, 4" minimum (End of walkway grating to  $\phi$  of nearest support bracket)
- h = 6'-0" maximum ( $\phi$  to  $\phi$  sign and/or walkway support brackets, WFA-N4x1.79 or WFA-N4x3.06)
- k = 2" maximum gap between adjacent walkway grating sections and handrail ends

\*\*If walkway bracket at safety chain location is behind sign, add angle to bracket, see Alternate Safety Chain Attachment on Base Sheet OS-A-11.

For Details T and W, Section B-B and Grating Splice Details, see Base Sheet OS-A-10.  
For Details D, F, G and P and Handrail Splice Details, see Base Sheet OS-A-11.

**SECTION A-A**

Handrail and walkway shall span a minimum of three brackets between splices and/or gap joints. Place all sign and walkway brackets as close to panel points as practical. Grating, handrail and light support splices placed as needed.

Truss grating to facilitate inspection shall run full length (center to center of support frames)  $\pm 12$ " on overhead trusses. Cost of truss grating is included in "Overhead Sign Structure".

Structure Number	Station	a	b	c	d	e	Walkway Grating and Handrail Lengths
ISO161057R357.7	215+44	7.88'	56'	28.13'	-	-	56'
ISO161057R357.9	227+29	7.88'	68.67'	32.46'	-	-	68.67'
ISO161094R062.8	2204+66	9.94'	60'	26.06'	-	-	60'
ISO161094R062.2	2242+70	7.94'	85'	19.06'	-	-	85'
ISO161094R061.7	2264+34	8.83'	64'	33.17'	-	-	64'
ISO161094R061.2	2290+90	7.04'	79'	23.96'	-	-	79'
ISO161094R060.2	2344+44	7.79'	79'	28.21'	-	-	79'

OS-A-9 11/1/2002

DESIGNED	-	2D
CHECKED	-	EXAMINED
DRAWN	-	PASSED
CHECKED	-	

NUMBER	REVISION	DATE

TYLIN INTERNATIONAL

REVISIONS	
NAME	DATE

ILLINOIS DEPARTMENT OF TRANSPORTATION  
F.A.I. 94 (DAN RYAN EXPRESSWAY)  
  
OVERHEAD SIGN STRUCTURES  
ALUMINUM WALKWAY DETAILS  
  
SCALE: AS NOTED  
DATE: MARCH 18, 2005  
DRAWN BY: AMB  
CHECKED BY: TB

3/25/2005 4:32:00 PM