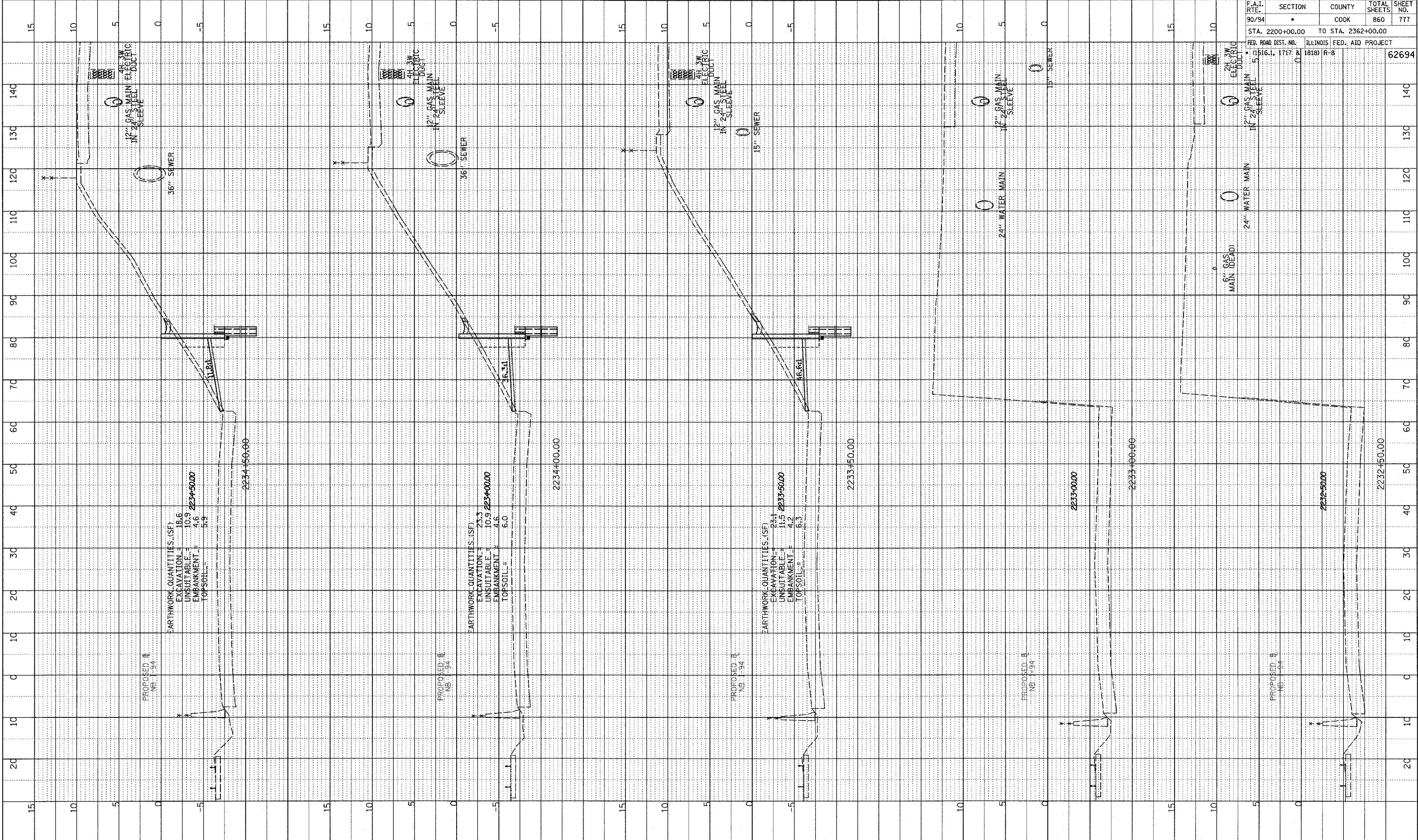
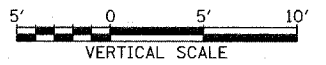
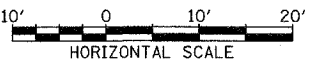


PLOTTED AND CHECKED
BY: [blank]
DATE: [blank]
STRUCTURE NOTATION: CPD



F.A.I. RTE. NO.	SECTION	COUNTY	TOTAL SHEETS	SHEET NO.
90/94	•	COOK	860	777
STA. 2200+00.00 TO STA. 2362+00.00		ILLINOIS FED. AID PROJECT		
FED. ROAD DIST. NO. (1516.1, 1717 & 1818) R-8		62694		

TYLIN INTERNATIONAL



NB 95th ST. ENTRANCE RAMP
STA. 2232+50 TO STA. 2234+50