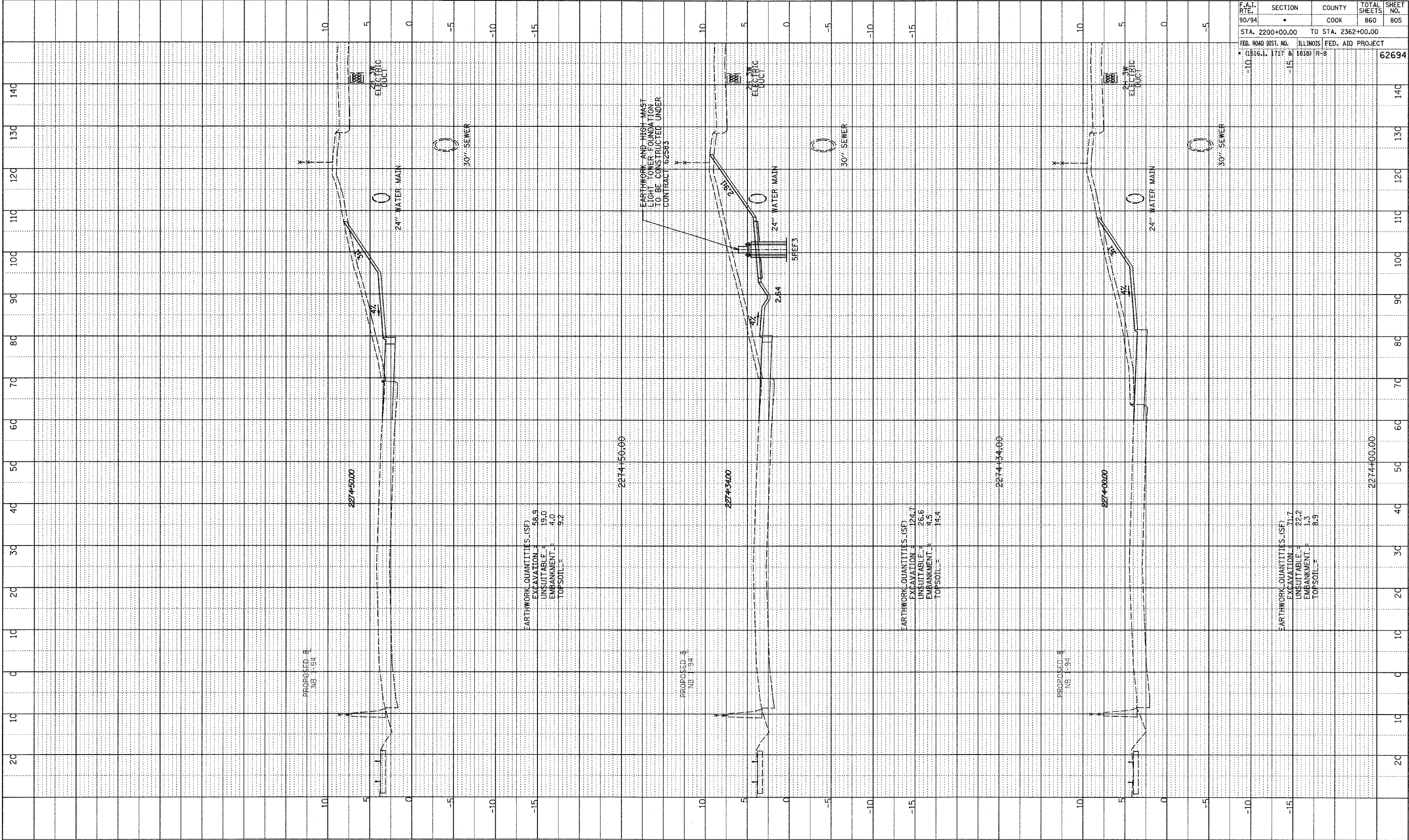


PLOTTED BY: [blank]
 CHECKED BY: [blank]
 DATE: [blank]
 STRUCTURE NOTATION: CHRD

F.A.T. RTE.:	SECTION	COUNTY	TOTAL SHEETS	SHEET NO.
90/94		COOK	860	805
STA. 2200+00.00 TO STA. 2362+00.00				
FED. ROAD DIST. NO. ILLINOIS FED. AID PROJECT				
• (1516.1, 1717 & 1818) R-8		62694		



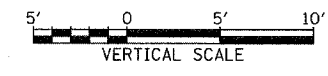
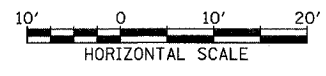
EARTHWORK QUANTITIES (SF)
 EXCAVATION = 58.9
 UNSUITABLE = 19.0
 EMBANKMENT = 4.0
 TOPSOIL = 9.2

EARTHWORK QUANTITIES (SF)
 EXCAVATION = 124.7
 UNSUITABLE = 26.6
 EMBANKMENT = 4.5
 TOPSOIL = 14.4

EARTHWORK QUANTITIES (SF)
 EXCAVATION = 71.7
 UNSUITABLE = 22.2
 EMBANKMENT = 1.3
 TOPSOIL = 8.9

EARTHWORK AND HIGH MAST
 LIGHT TOWER FOUNDATION
 TO BE CONSTRUCTED UNDER
 CONTRACT 82583

TYLIN INTERNATIONAL



NB 87th ST. ENTRANCE RAMP
 STA. 2274+00 TO STA. 2274+50

P:\0231\Road\07\09\01\Trans\87th.dwg