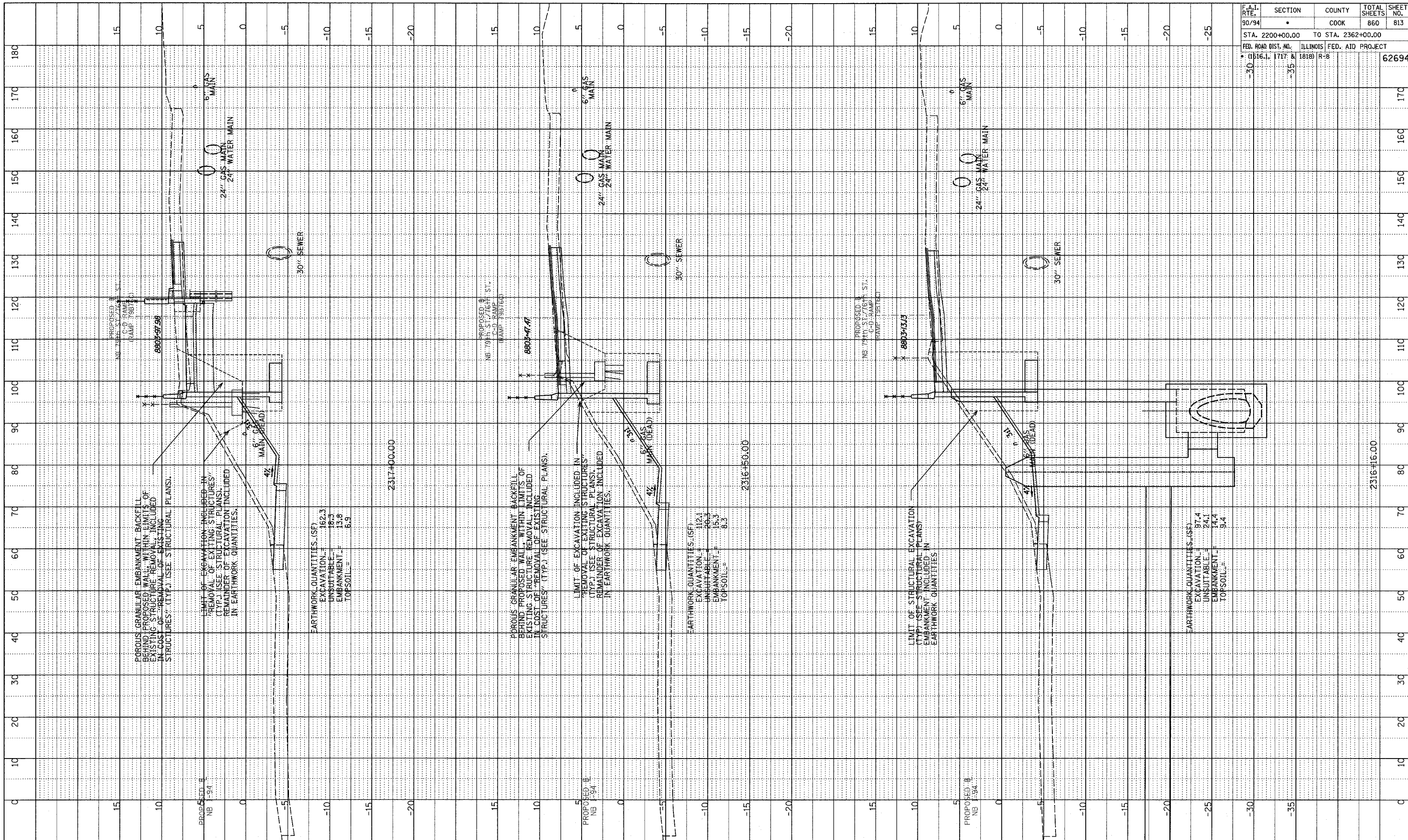


NOTE BOOK GRADES CHECKED E.M. NOTED DISCREPANCY NOTATIONS OK'NO

REVISED 4/15/05



F.A.I. RTE.	SECTION	COUNTY	TOTAL SHEETS	SHEET NO.
90/94	*	COOK	860	813
STA. 2200+00.00 TO STA. 2362+00.00				
FED. ROAD DIST. NO. ILLINOIS FED. AID PROJECT				
* (1516.1, 1717 & 1818) R-8		62694		

POROUS GRANULAR EMBANKMENT BACKFILL BEHIND PROPOSED WALLS. WITHIN LIMITS OF EXISTING STRUCTURE REMOVAL, INCLUDED IN COST OF "REMOVAL OF EXISTING STRUCTURES" (TYP.) (SEE STRUCTURAL PLANS).

LIMIT OF EXCAVATION INCLUDED IN "REMOVAL OF EXISTING STRUCTURES" (TYP.) (SEE STRUCTURAL PLANS). REMAINDER OF EXCAVATION INCLUDED IN EARTHWORK QUANTITIES.

EARTHWORK QUANTITIES (SF)
 EXCAVATION = 162.3
 UNSUITABLE = 18.3
 EMBANKMENT = 13.8
 TOPSOIL = 8.9

POROUS GRANULAR EMBANKMENT BACKFILL BEHIND PROPOSED WALL WITHIN LIMITS OF EXISTING STRUCTURE REMOVAL INCLUDED IN COST OF "REMOVAL OF EXISTING STRUCTURES" (TYP.) (SEE STRUCTURAL PLANS).

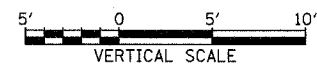
LIMIT OF EXCAVATION INCLUDED IN "REMOVAL OF EXISTING STRUCTURES" (TYP.) (SEE STRUCTURAL PLANS). REMAINDER OF EXCAVATION INCLUDED IN EARTHWORK QUANTITIES.

EARTHWORK QUANTITIES (SF)
 EXCAVATION = 112.1
 UNSUITABLE = 26.3
 EMBANKMENT = 15.3
 TOPSOIL = 8.3

LIMIT OF STRUCTURAL EXCAVATION (TYP.) (SEE STRUCTURAL PLANS). EMBANKMENT INCLUDED IN EARTHWORK QUANTITIES

EARTHWORK QUANTITIES (SF)
 EXCAVATION = 97.4
 UNSUITABLE = 24.1
 EMBANKMENT = 14.4
 TOPSOIL = 9.4

TYLIN INTERNATIONAL



NB 79th TO 76th C-D RAMP
 STA. 2316+16 TO STA. 2317+00

P:\02313\Road\CT\0.apr\17\Assist\916_F.dgn