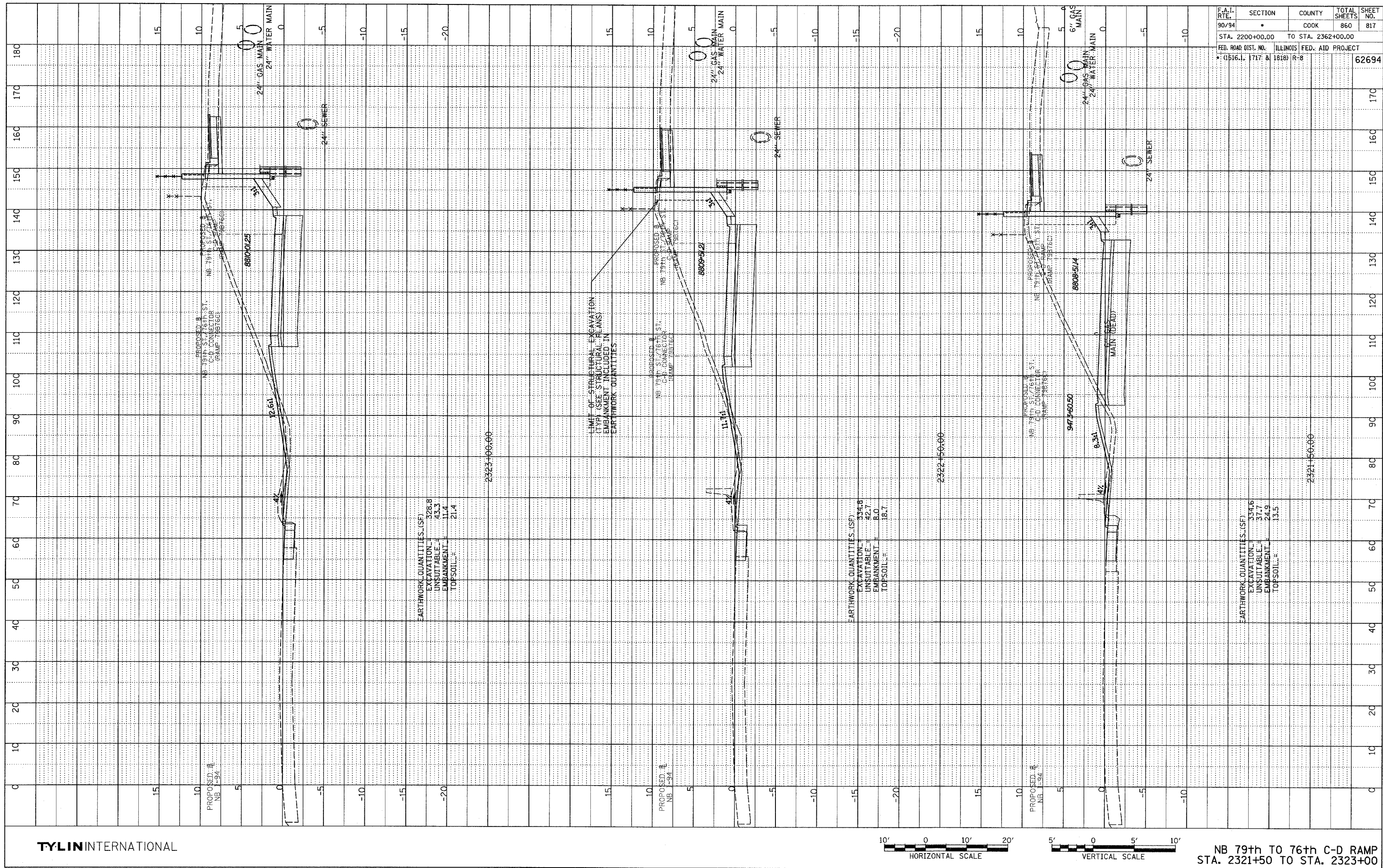
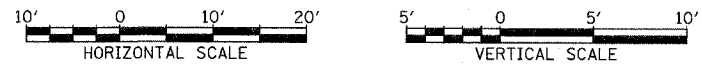


NOTE BOOK
NO. _____
PLOTTED, CHECKED
BY _____
STRUCTURE NOTATIONS CHNG
NO. _____



F.A.I. RTE.	SECTION	COUNTY	TOTAL SHEETS	SHEET NO.
90/94		COOK	860	817
STA. 2200+00.00 TO STA. 2362+00.00		ILLINOIS FED. AID PROJECT		
• (G1516.1, 1717 & 1818) R-8		62694		

TYLIN INTERNATIONAL



NB 79th TO 76th C-D RAMP
STA. 2321+50 TO STA. 2323+00

2323+00.00