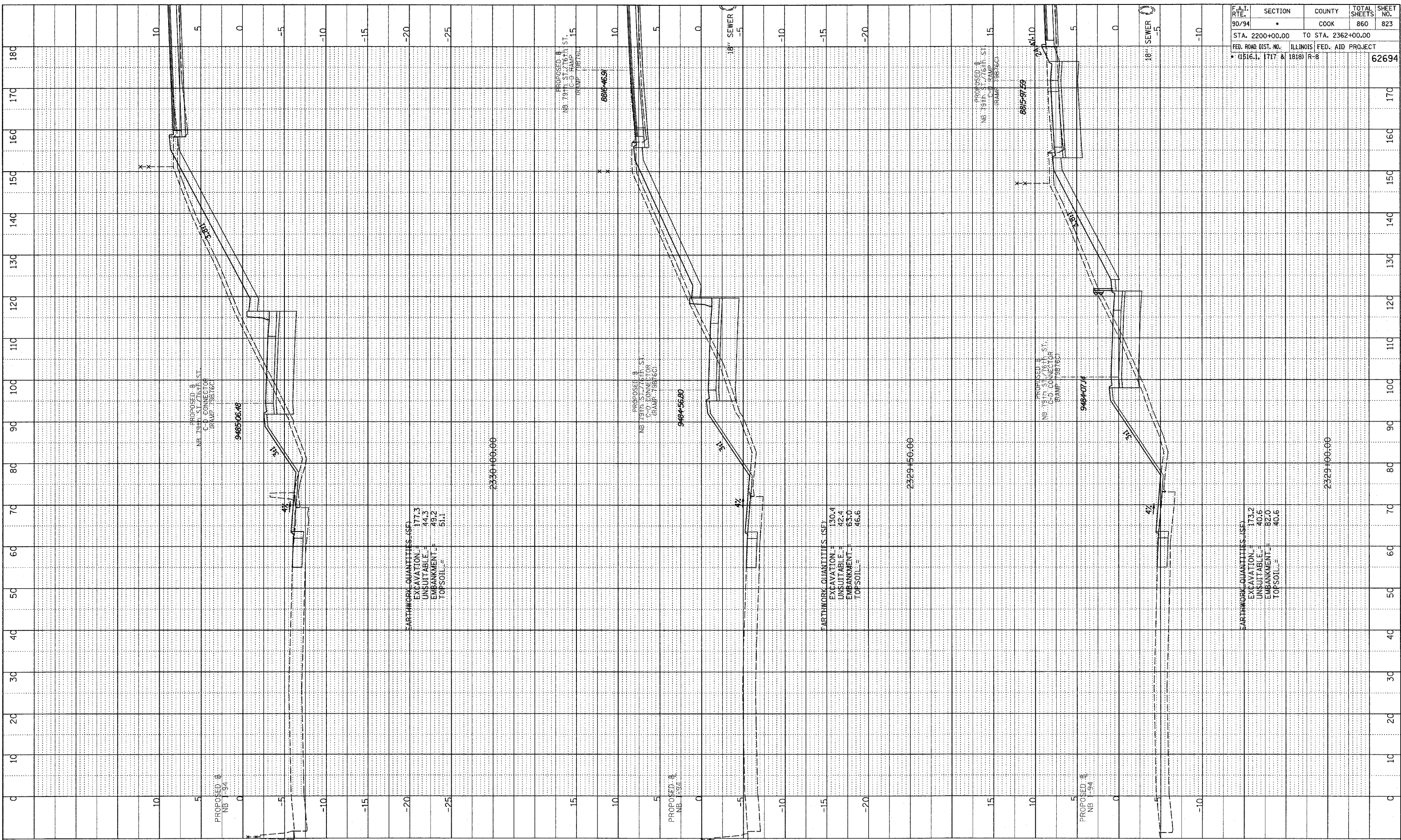
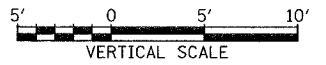


PLOTTED & CHECKED
 DATE: 11/11/11
 NO. _____
 STRUCTURE NOTATIONS CHRO

F.A.I. RTE.	SECTION	COUNTY	TOTAL SHEETS	SHEET NO.
90/94	*	COOK	860	823
STA. 2200+00.00		TO STA. 2362+00.00		
FED. ROAD DIST. NO.		ILLINOIS FED. AID PROJECT		
* (1516.1, 1717 & 1818) R-8				62694



TYLIN INTERNATIONAL



NB 79th TO 76th C-D RAMP
 STA. 2329+00 TO STA. 2330+00

p:\0237\3\road\c-d\c-d\k17\axstf1976_f.dgn