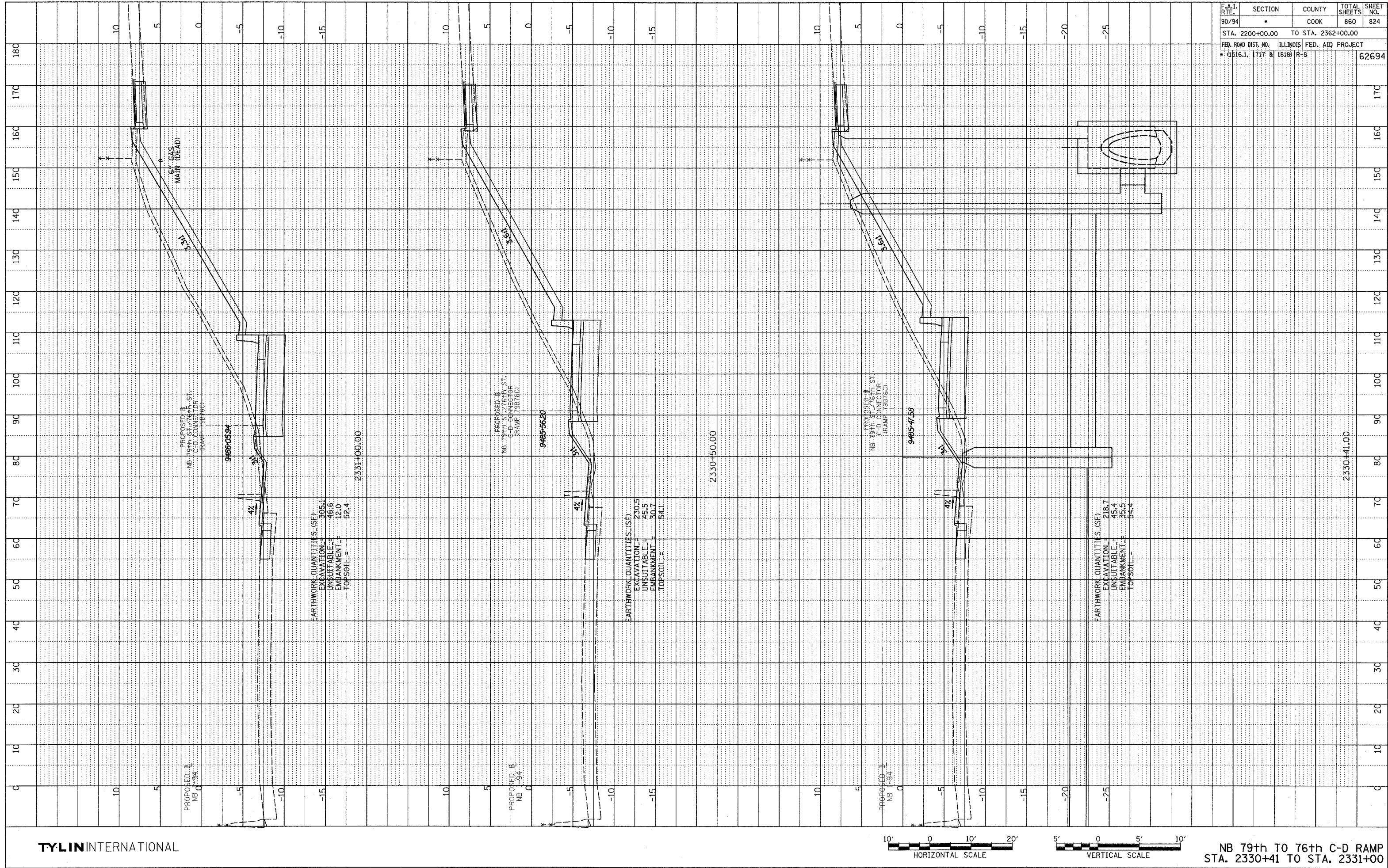


PLOTTED
 DATE: 11/15/94
 DRAWN BY: J. [unreadable]
 CHECKED BY: [unreadable]
 NO. [unreadable]
 STRUCTURE NOTATION: CIPRO

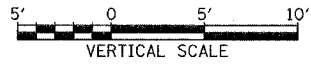
F.A.I. RTE.	SECTION	COUNTY	TOTAL SHEETS	SHEET NO.
90/94	*	COOK	860	824
STA. 2200+00.00 TO STA. 2362+00.00				
FED. ROAD DIST. NO. ILLINOIS FED. AID PROJECT				
* (1516.1, 1717 & 1818) R-8				
				62694



EARTHWORK QUANTITIES (SF)
 EXCAVATION = 305.1
 UNSUITABLE = 46.6
 EMBANKMENT = 12.0
 TOPSOIL = 66.4

EARTHWORK QUANTITIES (SF)
 EXCAVATION = 230.5
 UNSUITABLE = 45.5
 EMBANKMENT = 30.7
 TOPSOIL = 54.1

EARTHWORK QUANTITIES (SF)
 EXCAVATION = 218.7
 UNSUITABLE = 45.4
 EMBANKMENT = 35.5
 TOPSOIL = 54.4



TYLIN INTERNATIONAL

NB 79th TO 76th C-D RAMP
 STA. 2330+41 TO STA. 2331+00

P:\0237\3\road\94\94\94\17\ass\916_f.dgn