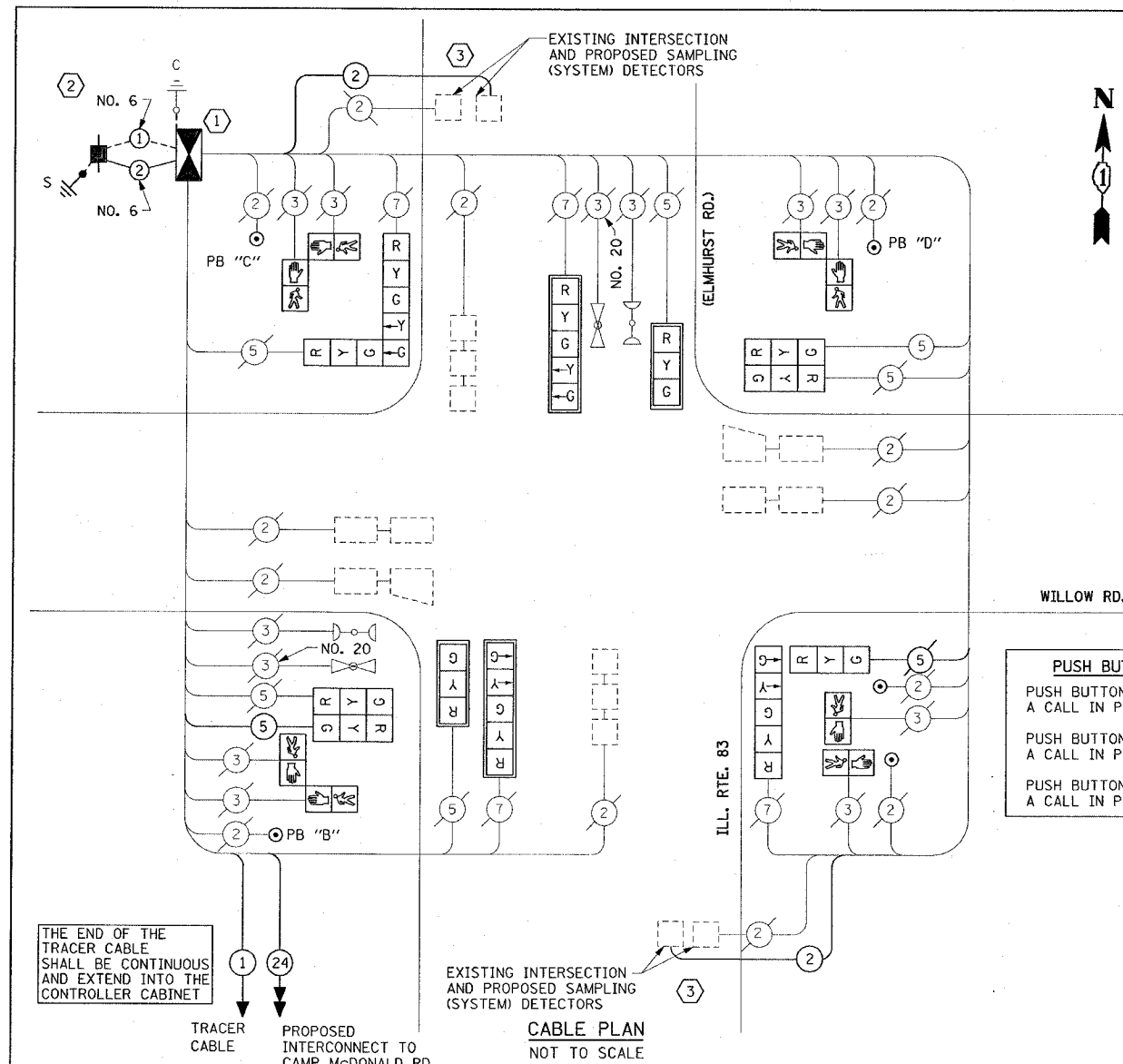


F.A.P. RTE. 334	SECTION 2004-01TTS	COUNTY COOK	TOTAL SHEETS 38	SHEET NO. 31
STA. TO STA.		FED. ROAD DIST. NO. 1 ILLINOIS FED. AID PROJECT		
CONTRACT #62736				



PUSH BUTTON NOTES
 PUSH BUTTON "B" SHALL PLACE A CALL IN PHASES 4 AND 6
 PUSH BUTTON "C" SHALL PLACE A CALL IN PHASES 6 AND 8
 PUSH BUTTON "D" SHALL PLACE A CALL IN PHASES 2 AND 8

CABLE PLAN LEGEND

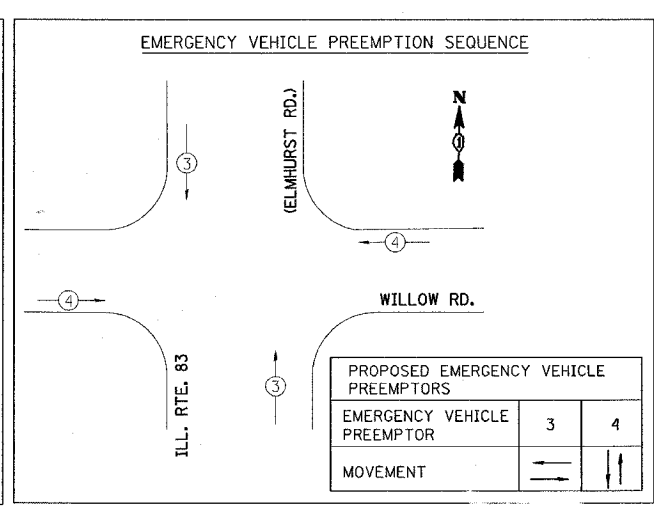
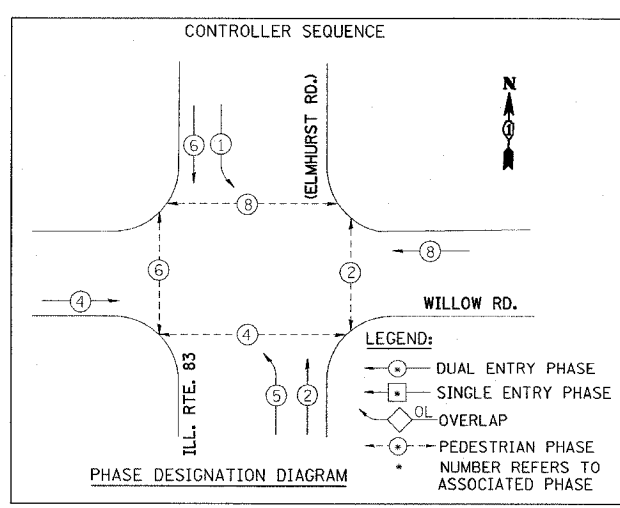
- | EXISTING | PROPOSED | |
|----------|----------|---|
| (G) | (G) | 8" (200mm) TRAFFIC SIGNAL SECTION |
| (R) | (R) | 12" (300mm) TRAFFIC SIGNAL SECTION |
| (W) | (W) | 12" (300mm) PEDESTRIAN SIGNAL SECTION |
| (P) | (P) | 12" (300mm) PEDESTRIAN SIGNAL SECTION |
| (C) | (C) | CONTROLLER CABINET |
| (S) | (S) | SERVICE INSTALLATION |
| (V) | (V) | VEHICLE DETECTOR, INDUCTION LOOP |
| (T) | (T) | TELEPHONE INSTALLATION |
| (M) | (M) | MAGNETIC DETECTOR |
| (E) | (E) | EMERGENCY VEHICLE LIGHT DETECTOR |
| (B) | (B) | CONFIRMATION BEACON |
| (PB) | (PB) | PUSHBUTTON DETECTOR |
| (2) | (2) | DENOTES NUMBER OF CONDUCTORS. ALL CABLE NO. 14 EXCEPT AS INDICATED. ALL LOOP DETECTOR CABLE TO BE SHIELDED. |
| (1) | (1) | GROUND CABLE IN CONDUIT NO. 6 SOLID COPPER (GREEN) |
| (24) | (24) | FIBER OPTIC CABLE IN CONDUIT NO. 62.5/125 2-MM12F SM12F |
| (R) | (R) | SIGNAL FACE WITH BACKPLATE |
| (P) | (P) | "P" INDICATES PROGRAMMED HEAD. |
| (E) | (E) | RAILROAD CONTROL CABINET |
| (E) | (E) | ILLUMINATED SIGN "NO LEFT TURN" |
| (E) | (E) | ILLUMINATED SIGN "NO RIGHT TURN" |
| H/C | C | GROUND ROD AT HANDHOLE (H), DOUBLE HANDHOLE (H), OR CONTROLLER (C) |
| P | P | GROUND ROD AT POST (P) OR MAST ARM POLE (MA) |
| S | S | GROUND ROD AT ELECTRIC SERVICE INSTALLATION |

SCHEDULE OF QUANTITIES

ITEM	UNIT	QNTY.
TRAFFIC CONTROL AND PROTECTION, STANDARD 701501	L SUM	0.11
TRAFFIC CONTROL AND PROTECTION, STANDARD 701606	L SUM	0.11
TRAFFIC CONTROL AND PROTECTION, STANDARD 701701	L SUM	0.11
TRAFFIC CONTROL AND PROTECTION, STANDARD 701801	L SUM	0.11
MAINTENANCE OF EXISTING TRAFFIC SIGNAL INSTALLATION	EACH	1
FULL-ACTUATED CONTROLLER AND TYPE IV CABINET (SPECIAL)	EACH	1
TRANSCIVER - FIBER OPTIC	EACH	1
ELECTRIC CABLE IN CONDUIT, SIGNAL NO. 14 3C	FOOT	400
ELECTRIC CABLE IN CONDUIT, LEAD-IN, NO. 14 1 PAIR	FOOT	745
ELECTRIC CABLE IN CONDUIT, SERVICE, NO. 6 2 C	FOOT	39
ELECTRIC CABLE IN CONDUIT, GROUNDING, NO. 6 1C	FOOT	39
INDUCTIVE LOOP DETECTOR	EACH	10
PEDESTRIAN PUSH-BUTTON	EACH	5
REMOVE EXISTING TRAFFIC SIGNAL EQUIPMENT	EACH	1
REMOVE EXISTING TRAFFIC SIGNAL EQUIPMENT	EACH	1
SERVICE INSTALLATION, POLE MOUNT	EACH	1
SIGNAL HEAD, L.E.D., 3-SECTION, MAST ARM MOUNTED	EACH	2
SIGNAL HEAD, L.E.D., 3-SECTION, BRACKET MOUNTED	EACH	1
SIGNAL HEAD, L.E.D., 2-FACE, 1-3 SECTION, 1-5 SECTION, BRACKET MOUNTED	EACH	1
SIGNAL HEAD, L.E.D., 2-FACE, 3 SECTION, BRACKET MOUNTED	EACH	2
SIGNAL HEAD, L.E.D., 5-SECTION, BRACKET MOUNTED	EACH	1
SIGNAL HEAD, L.E.D., 5-SECTION, MAST ARM MOUNTED	EACH	2
PEDESTRIAN SIGNAL HEAD, L.E.D., 1-FACE, BRACKET MOUNTED	EACH	2
PEDESTRIAN SIGNAL HEAD, L.E.D., 2-FACE, BRACKET MOUNTED	EACH	3
TRAFFIC SIGNAL POST, GALVANIZED 14 FT.	EACH	2
TRAFFIC SIGNAL POST, GALVANIZED 16 FT.	EACH	2
TRAFFIC SIGNAL POST, GALVANIZED 18 FT.	EACH	1
TRAFFIC SIGNAL BACKPLATE, LOUVERED, ALUMINUM	EACH	4

THE END OF THE TRACER CABLE SHALL BE CONTINUOUS AND EXTEND INTO THE CONTROLLER CABINET

EXISTING INTERSECTION AND PROPOSED SAMPLING (SYSTEM) DETECTORS
 CABLE PLAN NOT TO SCALE



NOTE: THE PROPOSED TRAFFIC SIGNAL CONTROL EQUIPMENT FOR THIS PROJECT IS "ECONOLITE".

CONSTRUCTION NOTES:

- REMOVE EXISTING CONTROLLER AND CABINET. INSTALL NEW CONTROLLER AND TYPE IV CABINET. RE-USE EXISTING FOUNDATION. RELOCATE EXISTING EMERGENCY VEHICLE PRIORITY SYSTEM PHASING UNIT TO NEW CONTROLLER CABINET INCLUDED IN COST OF THE NEW CONTROLLER AND CABINET.
- REMOVE EXISTING SERVICE CABLE AND SERVICE. INSTALL NEW SERVICE, SERVICE CABLE AND GROUND CABLE.
- INSTALL NEW ELECTRIC CABLE IN CONDUIT, LEAD-IN, NO. 14 1 PAIR.

I.D.O.T. TRAFFIC SIGNAL INSTALLATION ELECTRICAL SERVICE REQUIREMENTS					
TYPE	NO. LAMPS	WATTAGE INCAND	WATTAGE LED	% OPERATION	TOTAL WATTAGE
SIGNAL (RED)	12	135	17	0.50	102.00
(YELLOW)	12	135	25	0.25	75.00
(GREEN)	12	135	15	0.25	45.00
ARROW	8	135	12	0.10	9.60
PED. SIGNAL	8	90	25	1.00	200.00
CONTROLLER	1	100	100	1.00	100.00
ILLUM. SIGN		84	35	0.05	
FLASHER		135	25	0.50	
TOTAL =					531.60

FOUNDATION (DEPTH)	(FT.) (m)	CABLE SLACK (FT.) (m)	CABLE SLACK (FT.) (m)	
TYPE A - POST	4 (1.2)	HANDHOLE	6.5 (2.0)	
D - CONTROLLER	4 (1.2)	DOUBLE HANDHOLE	13 (4.0)	
E - M. ARM POLE		SIGNAL POST	2 (0.6)	
24" (600mm)	10 (3.0)	CONTROLLER CAB.	1 (0.5)	
30" (750mm)	15 (4.6)	FIBER OPTIC	13 (4.0)	
		ELECTRIC SERVICE	1 (0.5)	
		GROUND CABLE	1 (0.5)	
			POST MOUNTED	6 (1.8)

ENERGY COST TO: Illinois Department of Transportation
 Division of Highways / District 1
 201 W Center Court / Schaumburg, Illinois 60196-1096

ENERGY SUPPLY: CONTACT: MS. JUDY SCHOMER
 PHONE: (847)-870-2063
 COMPANY: ComEd

REVISIONS	
NAME	DATE

ILLINOIS DEPARTMENT OF TRANSPORTATION

CABLE PLAN, PHASE DESIGNATION DIAGRAM, EMERGENCY VEHICLE PREEMPTION SEQUENCE AND SCHEDULE OF QUANTITIES
 ILL. ROUTE 83 AT WILLOW ROAD

SCALE: NONE
 DATE: 3/22/2005

DRAWN BY: BCK
 DESIGNED BY: SM
 CHECKED BY: DAD

c:\projects\traffic\013000\1183.m32 3/22/2005 c:\projects\traffic\013000\1183.m32 kanthobhixaybc