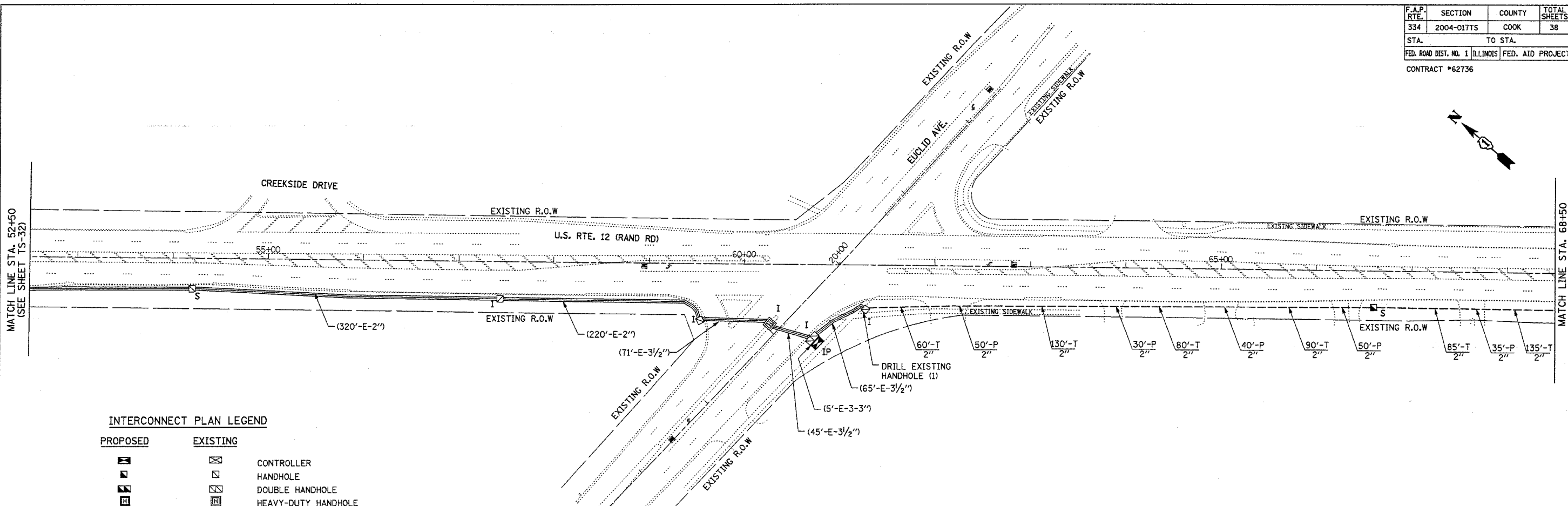


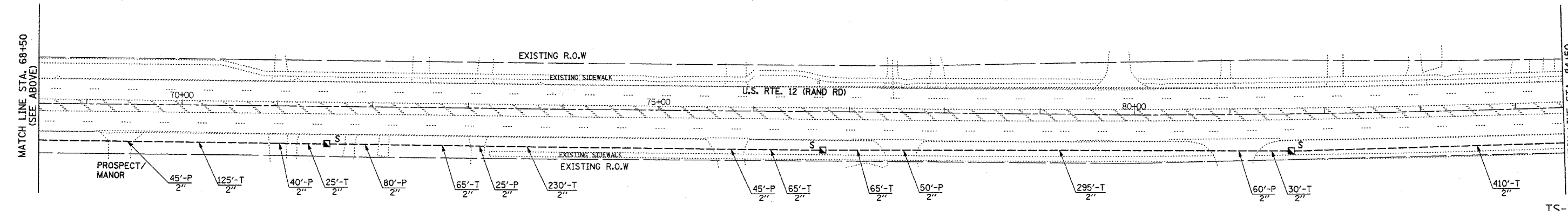
F.A.P. RTE.	SECTION	COUNTY	TOTAL SHEETS	SHEET NO.
334	2004-017TS	COOK	38	33
STA.		TO STA.		
FED. ROAD DIST. NO. 1		ILLINOIS FED. AID PROJECT		
CONTRACT #62736				



INTERCONNECT PLAN LEGEND

PROPOSED	EXISTING	
		CONTROLLER
		HANDHOLE
		DOUBLE HANDHOLE
		HEAVY-DUTY HANDHOLE
		G.S. CONDUIT IN TRENCH (T) OR PUSHED (P)
		DETECTOR LOOP
		COMMON TRENCH
		UNIT DUCT
		SYSTEM
		INTERSECTION

NOTE: SPECIAL CARE MUST BE TAKEN WHEN TRENCHING AND PUSHING CONDUIT, INSTALLING HANDHOLES, ETC. TO AVOID HITTING BURIED CABLES, UTILITIES, TREES, ORNAMENTAL PLANTS, ETC.



G:\projects\JOB 337\SH12\inter-2.sht 06/09/2004

REVISIONS		DATE
NAME		

ILLINOIS DEPARTMENT OF TRANSPORTATION

INTERCONNECT PLAN
U.S. ROUTE 12 (RAND RD.)
FROM CAMP McDONALD RD. TO/
ILL. RTE. 83 (ELMHURST RD.)
SHEET 2 OF 3

SCALE: 1"=50'
DATE: JUNE 15, 2004

DRAWN BY: RV/MD
DESIGNED BY: AZ
CHECKED BY: AZ

KAM ENGINEERING, INC.
CONSULTING ENGINEERS
7074 Davis Road, Suite 205
Eglin, Illinois 6023-1369

TS-33