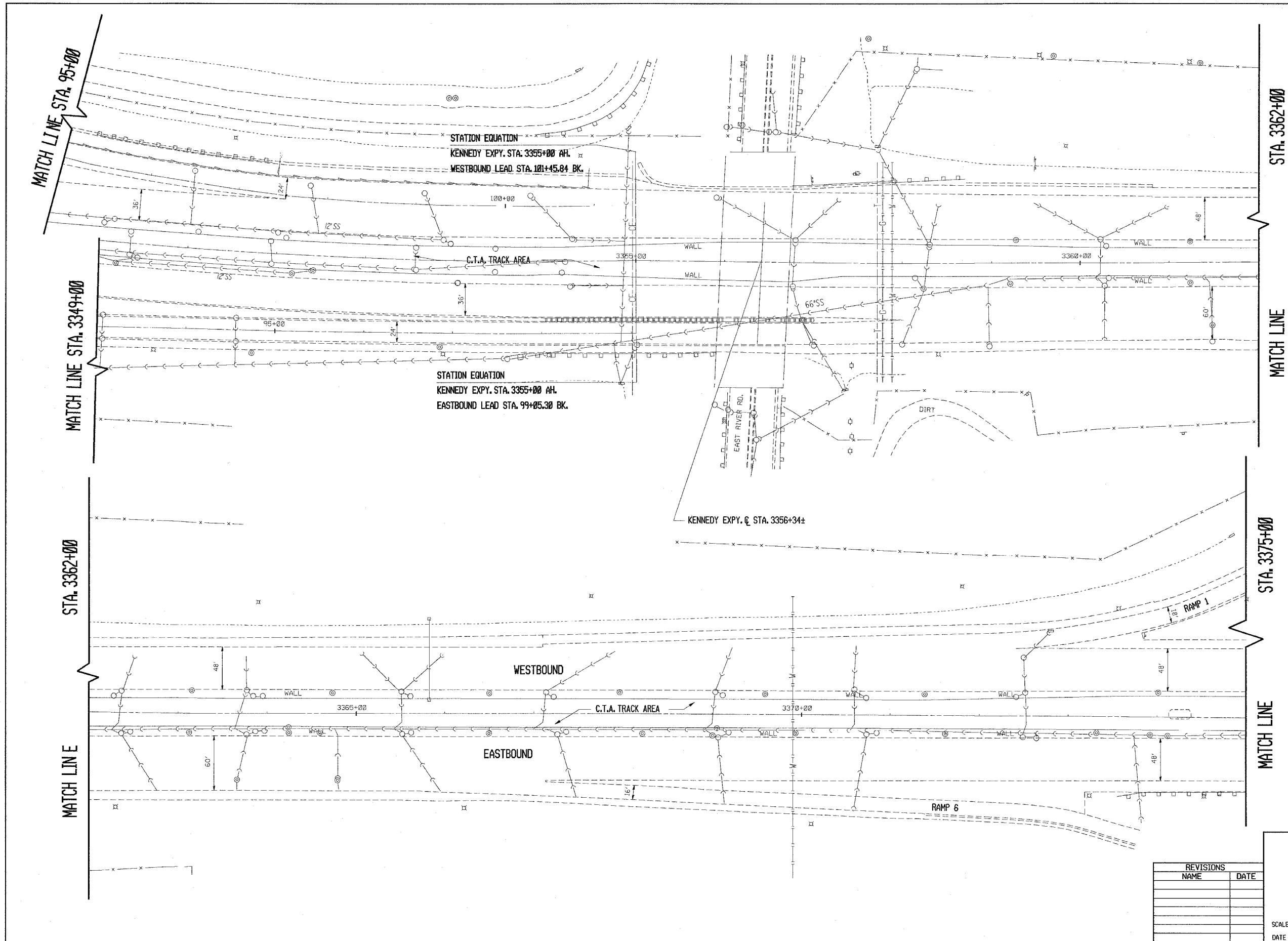


CONTRACT NO. 62746			
F.A.I. RTE.	SECTION	COUNTY	TOTAL SHEET NO.
90		COOK	82 14
STA. 3349+00		TO STA. 3375+00	
FED. ROAD DIST. NO.	ILLINOIS FED. AID PROJECT		
• (1012, 1214, 1415, & 1517) RS-3			



STA. 3362+00

MATCH LINE

STA. 3375+00

MATCH LINE

REVISIONS	
NAME	DATE

ILLINOIS DEPARTMENT OF TRANSPORTATION
F.A.I. ROUTE 90
KENNEDY EXPRESSWAY
EXISTING CONDITIONS
STA. 3349+00 TO STA. 3375+00

SCALE: HORIZ. SCALE IN FEET
 DATE 9/10/86 DRAWN BY CAD0 CHECKED BY