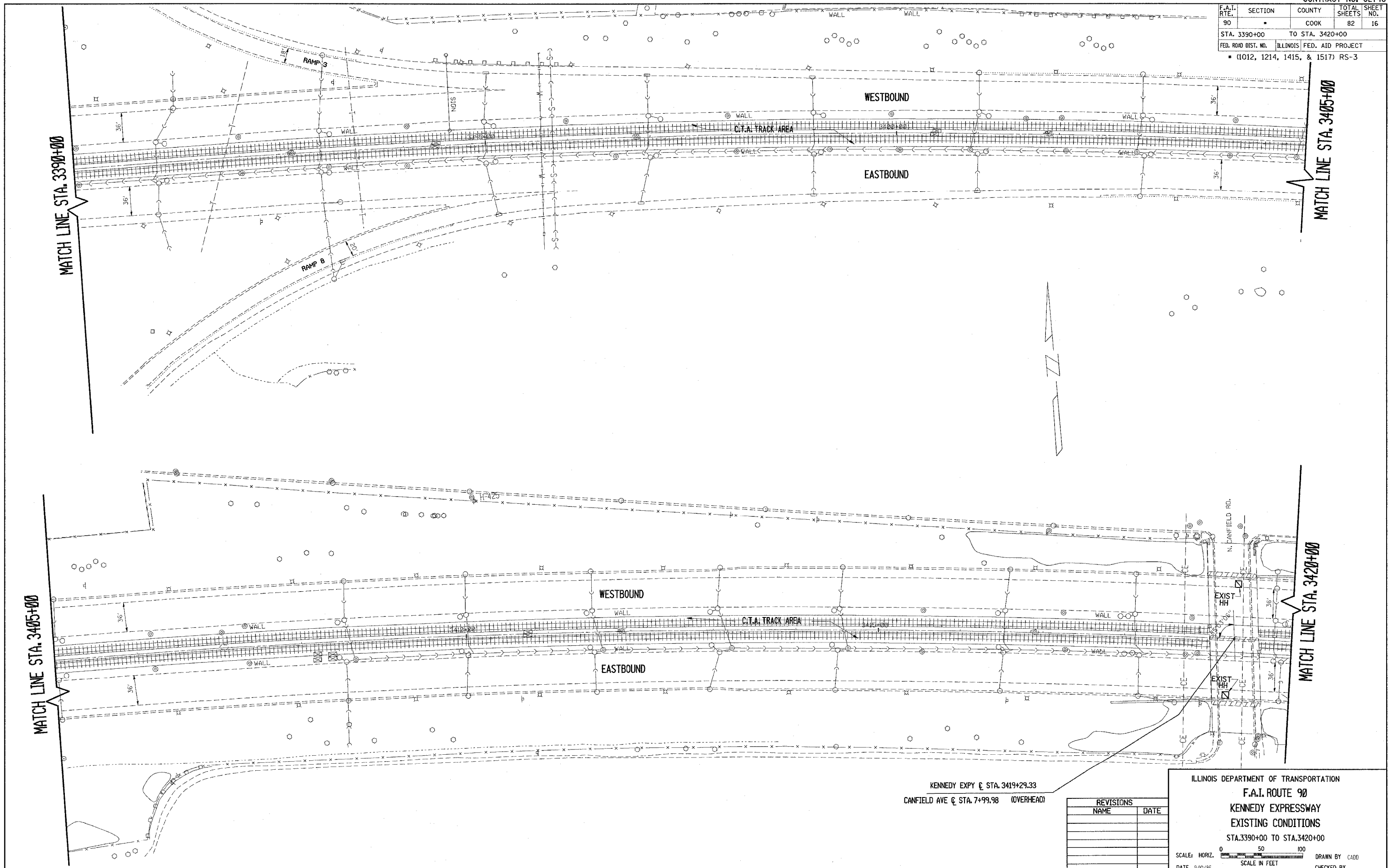


CONTRACT NO. 62746

F.A.I. RTE.	SECTION	COUNTY	TOTAL SHEETS	SHEET NO.
90		COOK	82	16
STA. 3390+00		TO STA. 3420+00		
FED. ROAD DIST. NO.	ILLINOIS	FED. AID PROJECT		
• (1012, 1214, 1415, & 1517) RS-3				



KENNEDY EXPY @ STA. 3419+29.33
 CANFIELD AVE @ STA. 7+99.98 (OVERHEAD)

REVISIONS	
NAME	DATE

ILLINOIS DEPARTMENT OF TRANSPORTATION
 F.A.I. ROUTE 90
 KENNEDY EXPRESSWAY
 EXISTING CONDITIONS
 STA. 3390+00 TO STA. 3420+00

SCALE: HORIZ. SCALE IN FEET
 DATE 9/10/86 DRAWN BY CADD CHECKED BY