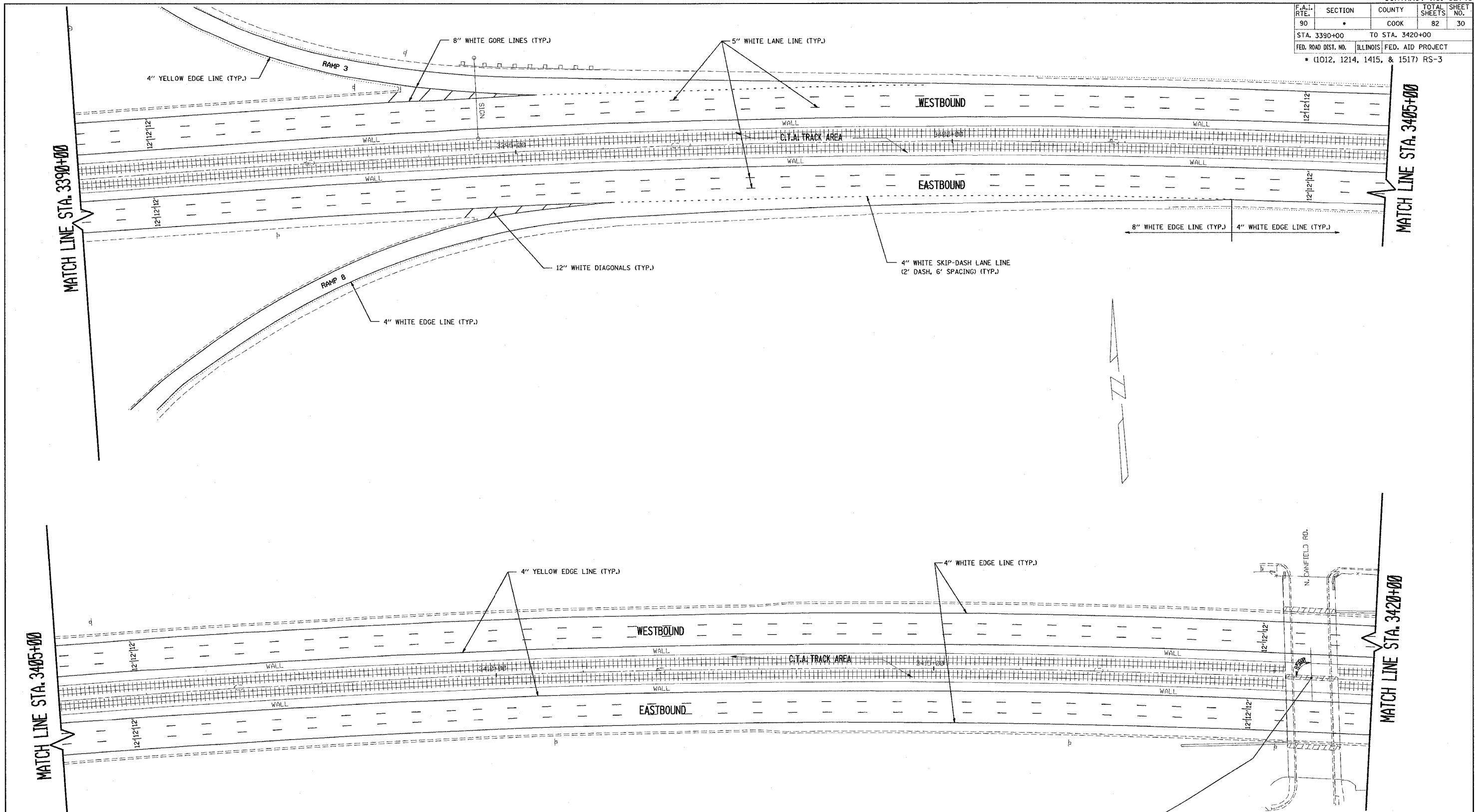


F.A.I. RTE.	SECTION	COUNTY	TOTAL SHEETS	SHEET NO.
90		COOK	82	30
STA. 3390+00		TO STA. 3420+00		
FED. ROAD DIST. NO.		ILLINOIS FED. AID PROJECT		
* (1012, 1214, 1415, & 1517) RS-3				



NOTE:
SEE DISTRICT DETAIL "MULTI-LANE FREEWAY PAVEMENT MARKING DETAILS" FOR RAISED REFLECTIVE PAVEMENT MARKERS AND OTHER PAVEMENT MARKINGS.

KENNEDY EXPY @ STA. 3419+29.33
CANFIELD AVE @ STA. 7+99.98 (OVERHEAD)

REVISIONS	
NAME	DATE

ILLINOIS DEPARTMENT OF TRANSPORTATION
F.A.I. ROUTE 90
KENNEDY EXPRESSWAY
PROPOSED PLANS & PAVEMENT MARKING PLANS
STA. 3390+00 TO STA. 3420+00

SCALE: HORIZ. SCALE IN FEET
DATE 9/10/86 DRAWN BY CADD CHECKED BY