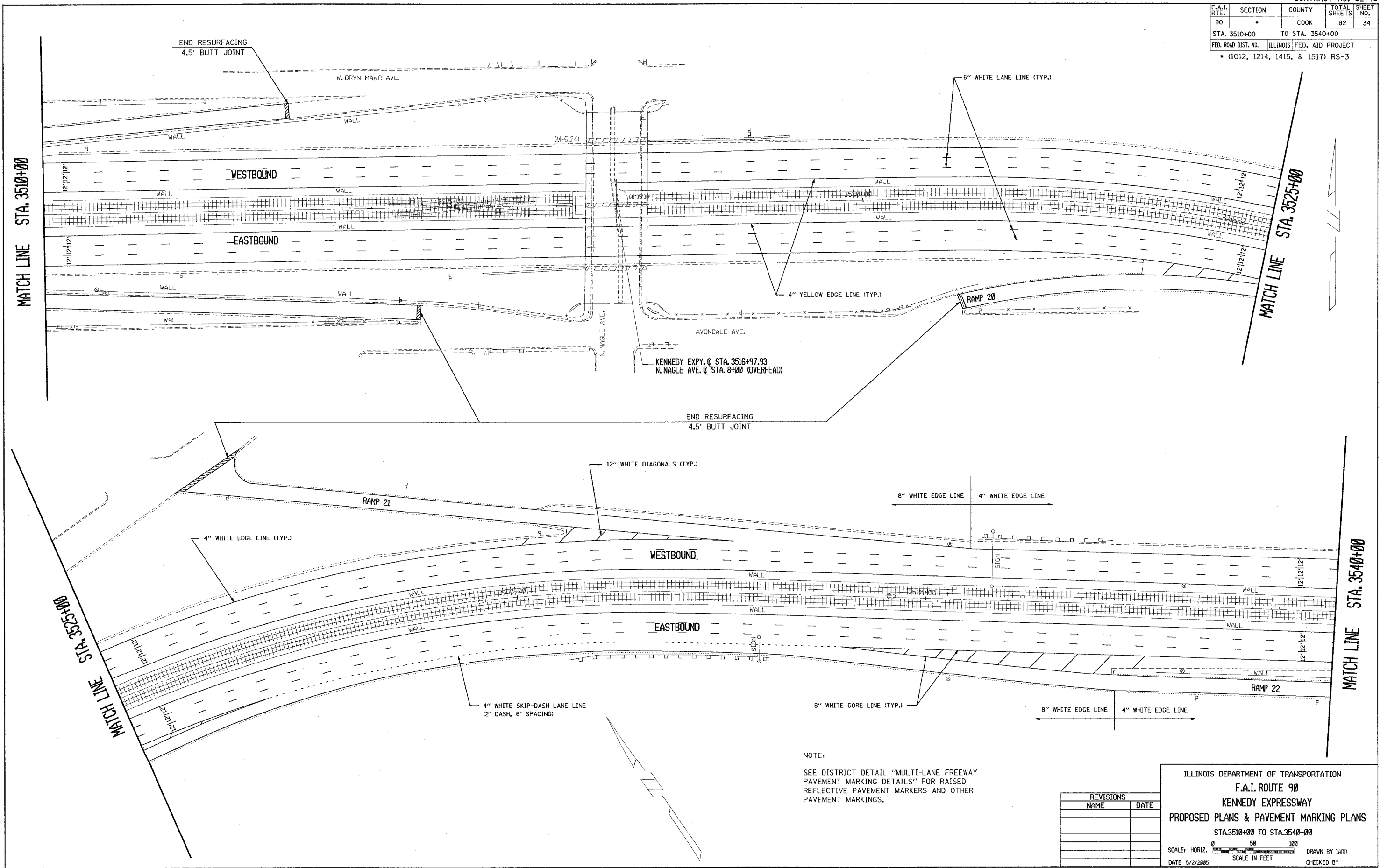


CONTRACT NO. 62746				
F.A.I. RTE.	SECTION	COUNTY	TOTAL SHEETS	SHEET NO.
90		COOK	82	34
STA. 3510+00		TO STA. 3540+00		
FED. ROAD DIST. NO.	ILLINOIS	FED. AID PROJECT		
• (1012, 1214, 1415, & 1517) RS-3				



MATCH LINE STA. 3510+00

MATCH LINE STA. 3525+00

MATCH LINE STA. 3535+00

MATCH LINE STA. 3540+00

NOTE:
SEE DISTRICT DETAIL "MULTI-LANE FREEWAY PAVEMENT MARKING DETAILS" FOR RAISED REFLECTIVE PAVEMENT MARKERS AND OTHER PAVEMENT MARKINGS.

REVISIONS	
NAME	DATE

ILLINOIS DEPARTMENT OF TRANSPORTATION
F.A.I. ROUTE 90
KENNEDY EXPRESSWAY
PROPOSED PLANS & PAVEMENT MARKING PLANS
 STA. 3510+00 TO STA. 3540+00

SCALE: HORIZ. SCALE IN FEET
 DATE 5/2/2005 DRAWN BY CAD0 CHECKED BY