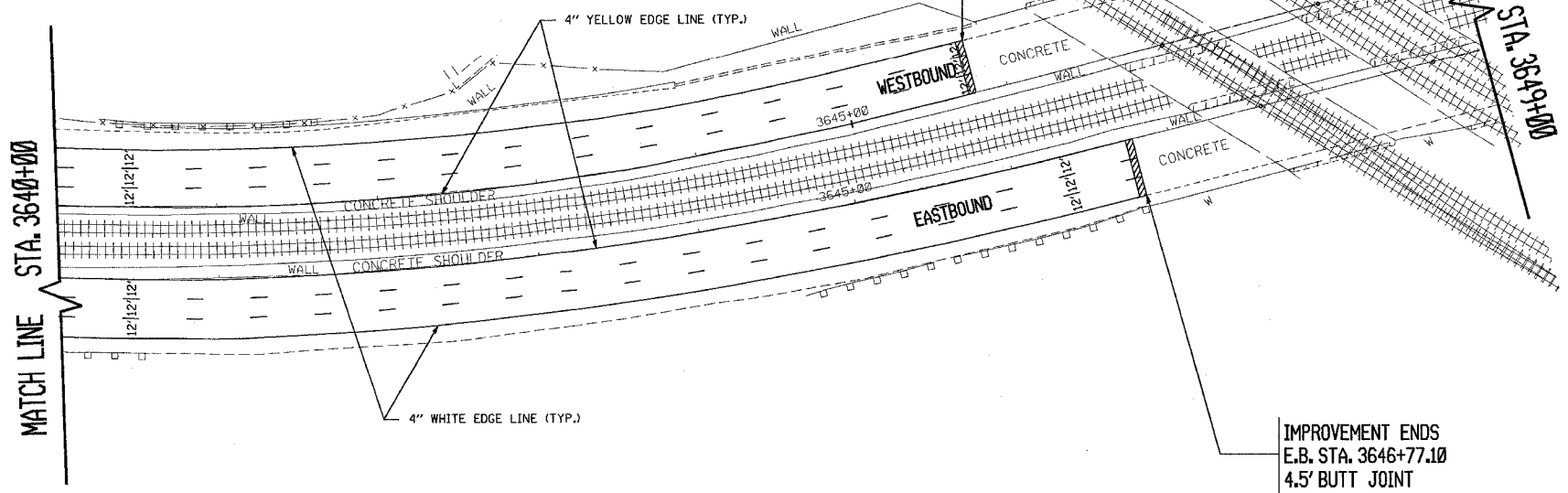
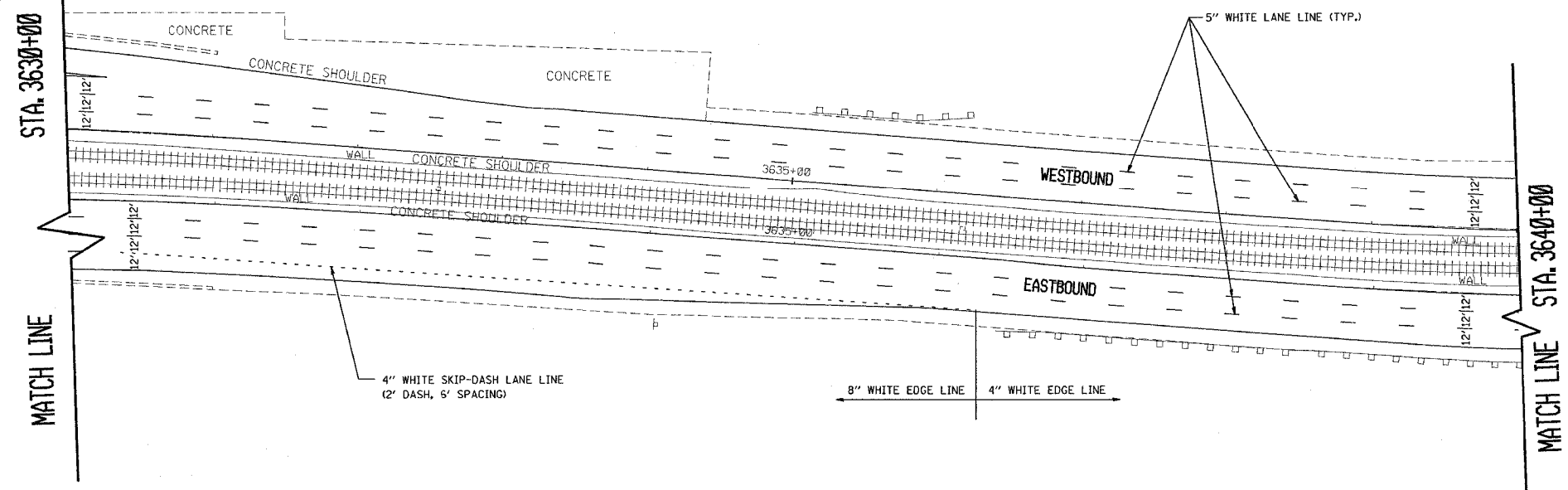


CONTRACT NO. 62746				
F.A.I. RTE.	SECTION	COUNTY	TOTAL SHEETS	SHEET NO.
90		COOK	42	38
STA. 3630+00		TO STA. 3649+00		
FED. ROAD DIST. NO.	ILLINOIS	FED. AID PROJECT		
• (1012, 1214, 1415, & 1517) RS-3				



NOTES:

NO MILLING OR RESURFACING OF EXISTING MEDIAN SHOULDER STA. 3610+38 TO STA. 3646+77.10 (E.B. & W.B.)

SEE DISTRICT DETAIL "MULTI-LANE FREEWAY PAVEMENT MARKING DETAILS" FOR RAISED REFLECTIVE PAVEMENT MARKERS AND OTHER PAVEMENT MARKINGS.

REVISIONS	
NAME	DATE

ILLINOIS DEPARTMENT OF TRANSPORTATION
 F.A.I. ROUTE 90
 KENNEDY EXPRESSWAY
 PROPOSED PLANS & PAVEMENT MARKING PLANS
 STA. 3630+00 TO STA. 3649+00

SCALE: HORIZ. SCALE IN FEET

DATE ##DATE## DRAWN BY CADJ CHECKED BY