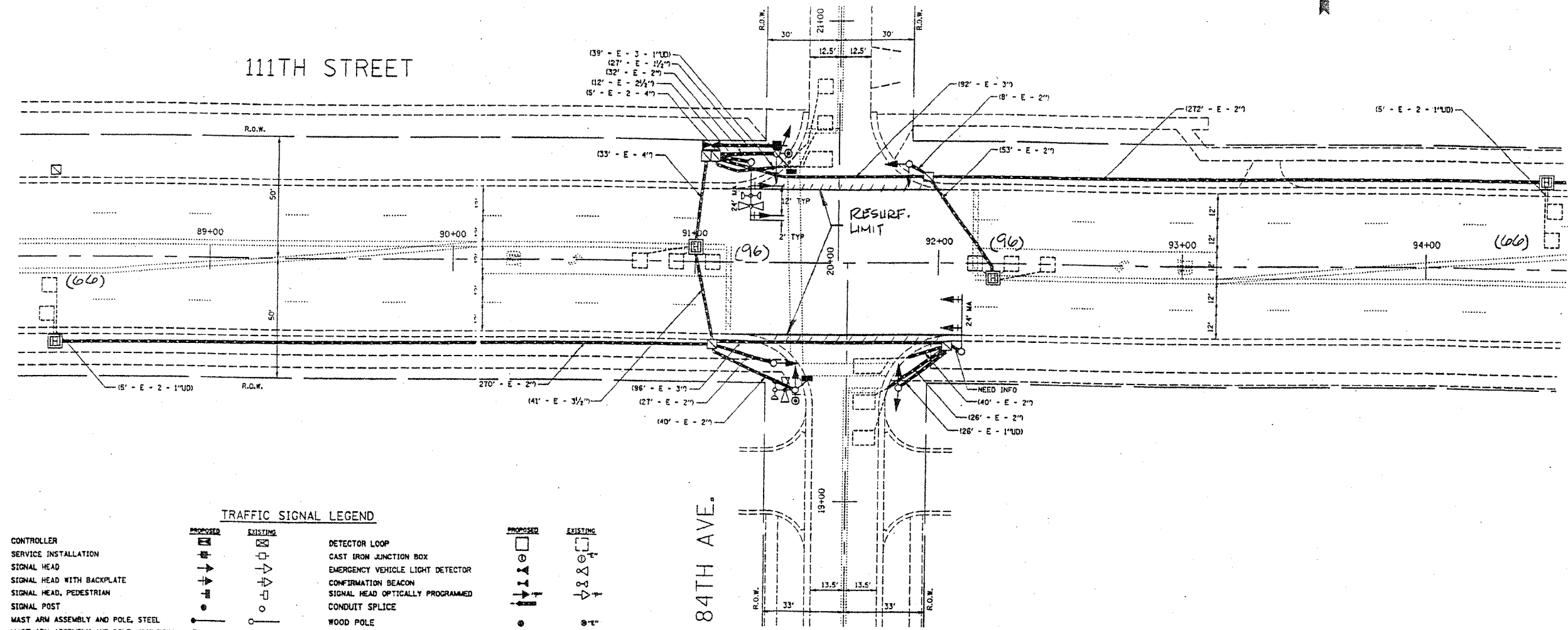


F.A.D. SHEET NO.	SECTION	COUNTY	TOTAL SHEETS	SHEET NO.
1584	*		29	11
STA.	TO STA.			
FED. ROAD DIST. NO. 1	ILLINOIS	FED. AID PROJECT		

*(0202 & 0208)RS-8
62748



TRAFFIC SIGNAL LEGEND

PROPOSED	EXISTING	PROPOSED	EXISTING
CONTROLLER	[Symbol]	DETECTOR LOOP	[Symbol]
SERVICE INSTALLATION	[Symbol]	CAST IRON JUNCTION BOX	[Symbol]
SIGNAL HEAD	[Symbol]	EMERGENCY VEHICLE LIGHT DETECTOR	[Symbol]
SIGNAL HEAD WITH BACKPLATE	[Symbol]	CONFIRMATION BEACON	[Symbol]
SIGNAL HEAD, PEDESTRIAN	[Symbol]	SIGNAL HEAD OPTICALLY PROGRAMMED	[Symbol]
SIGNAL POST	[Symbol]	CONDUIT SPLICE	[Symbol]
MAST ARM ASSEMBLY AND POLE, STEEL	[Symbol]	WOOD POLE	[Symbol]
MAST ARM ASSEMBLY AND POLE, ALUMINUM	[Symbol]	RACEWAY FOR MAGNETIC DETECTOR, TYPE I OR TYPE II	[Symbol]
COMBINATION MAST ARM ASSEMBLY AND POLE, STEEL WITH LUMINAIRE	[Symbol]	VEHICLE DETECTOR, NON COMPENSATED MAGNETIC TYPE	[Symbol]
UNIT DUCT	[Symbol]	RAILROAD CONTROL CABINET	[Symbol]
COMMON TRENCH	[Symbol]	TELEPHONE CONNECTION	[Symbol]
HANDHOLE	[Symbol]	ILLUMINATED SIGN, FIBER OPTIC "NO LEFT TURN"	[Symbol]
HEAVY DUTY HANDHOLE	[Symbol]	ILLUMINATED SIGN, FIBER OPTIC "NO RIGHT TURN"	[Symbol]
DOUBLE HANDHOLE	[Symbol]		
G.S. CONDUIT IN TRENCH OR PUSHED	[Symbol]		
PEDESTRIAN PUSHBUTTON DETECTOR	[Symbol]		

NOTE:
THIS PLAN IS FOR THE PURPOSE OF REPLACING THE DETECTOR LOOPS ONLY. ALL OTHER INFORMATION SHOWN IS NOT RELATED AND WILL BE DISREGARDED.

REPLACE ALL DETECTOR LOOPS AS SHOWN

(WITHIN THE RESURFACING LIMITS)

CODE NO.	QUANTITY	UNIT	ITEM
86600600	360	Foot	Detector Loop Replacement

REVISIONS	
NAME	DATE

ILLINOIS DEPARTMENT OF TRANSPORTATION
DETECTOR LOOP REPLACEMENT
111TH STREET @ 84TH AVENUE
SCALE: 1" = 20'
DATE: _____
DRAWN BY: _____
DESIGNED BY: _____
CHECKED BY: _____