

62795

F.A.I. RTE.	SECTION	COUNTY	TOTAL SHEETS	SHEET NO.
90/94	2004-056I	COOK	47	1

STATE OF ILLINOIS
DEPARTMENT OF TRANSPORTATION
DIVISION OF HIGHWAYS

D-91-419-01

INDEX OF SHEETS

SHEET	DESCRIPTION
1	COVER SHEET
2	GENERAL NOTES AND PROJECT COMMITMENTS
3-6	SUGGESTED CONSTRUCTION SCHEDULE
7	SUMMARY OF QUANTITIES
8	PROPOSED TYPICAL SECTIONS
9	SCHEDULE OF QUANTITIES
10-20	ALIGNMENT PLANS, SURVEY TIES, AND CONTROL POINTS
21-38	EXISTING AND PROPOSED ROADWAY PLANS
39-45	ROADWAY DETAILS
46	TRAFFIC CONTROL AND PROTECTION FOR SIDE ROADS, INTERSECTIONS, AND DRIVEWAYS
47	TEMPORARY INFORMATION SIGNING

PLANS FOR PROPOSED
FEDERAL AID HIGHWAY

F.A.I. ROUTE 90/94 (DAN RYAN EXPRESSWAY)
SECTION 2004-056I

PROJECT
INSTALLATION OF SIDEWALKS, DRIVEWAYS, AND ALLEY RETURNS ALONG WELLS STREET BETWEEN 59TH STREET AND 47TH STREET
COOK COUNTY
C-91-280-04

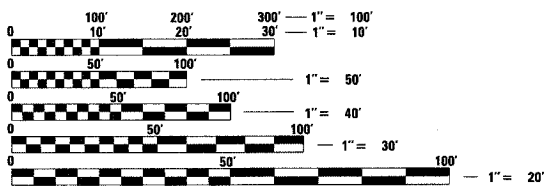
PROJECT LOCATED IN CITY OF CHICAGO

IDOT HIGHWAY STANDARDS

STANDARD	DESCRIPTION
000001-04	STANDARD SYMBOLS, ABBREVIATIONS, AND PATTERNS
001006	DECIMAL OF AN INCH AND OF A FOOT
442201-01	CLASS C AND D PATCHES
630001-05	STEEL PLATE BEAM GUARDRAIL
606001-02	CONCRETE CURB AND COMBINATION CURB AND GUTTER
701801-03	LANE CLOSURE, MULTILANE, 1W OR 2W, CROSSWALK OR SIDEWALK CLOSURE FOR SPEEDS < 45 MPH
702001-05	TRAFFIC CONTROL DEVICES
701601-04	URBAN LANE CLOSURE, MULTILANE, 1W OR 2W WITH NONTRAVERSABLE MEDIAN

DESIGN DESIGNATION

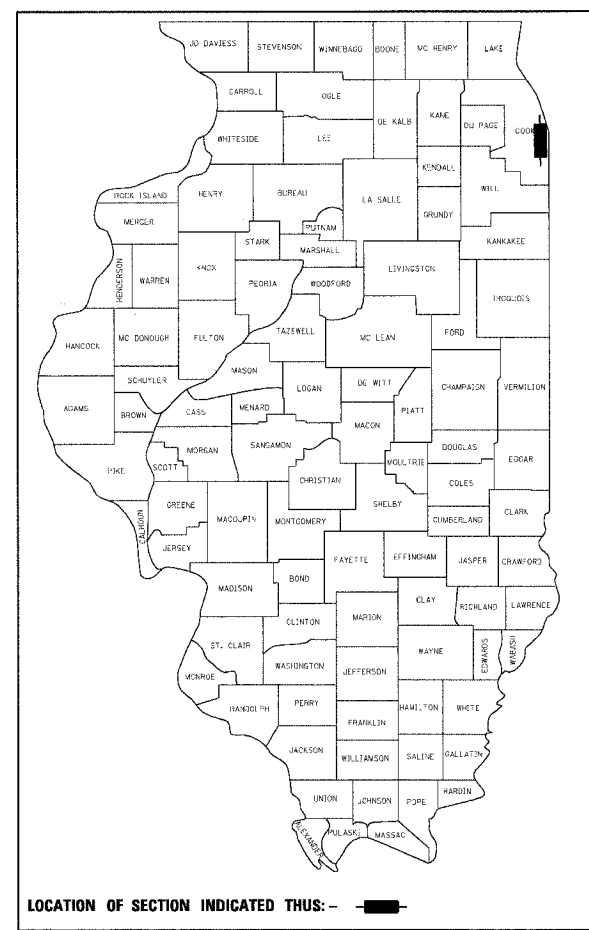
WELLS ST:	ADT (2020)	DESIGN SPEED	POSTED SPEED
8275 (20) URBAN COLLECTOR	15,000	30	25



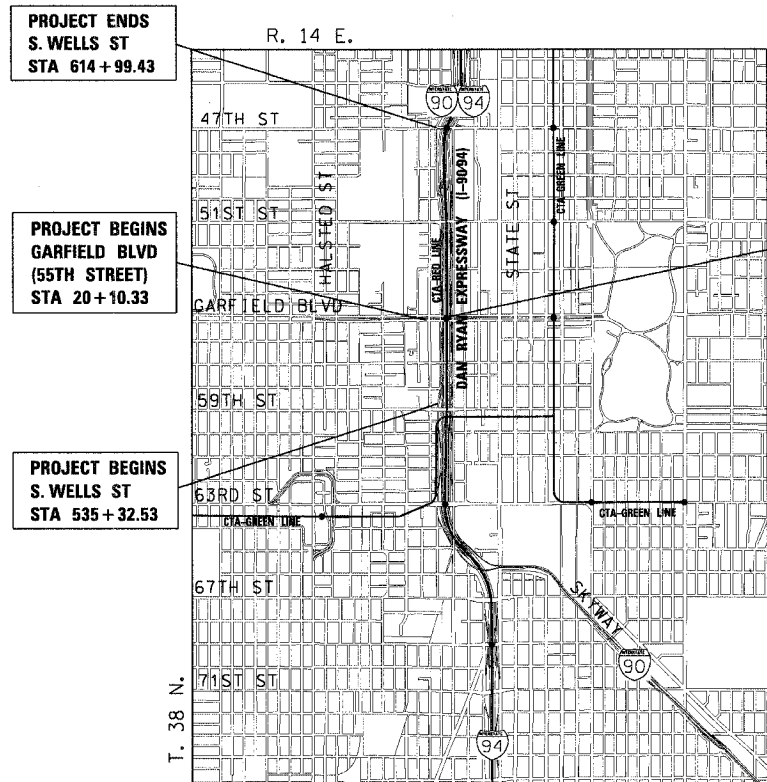
FULL SIZE PLANS HAVE BEEN PREPARED USING STANDARD ENGINEERING SCALES. REDUCED SIZED PLANS WILL NOT CONFORM TO STANDARD SCALES. IN MAKING MEASUREMENTS ON REDUCED PLANS, THE ABOVE SCALES MAY BE USED.

CUAN:
CHICAGO UTILITY ALERT NETWORK
(312) 744-7000

CONTRACT NO. 62795



LOCATION OF SECTION INDICATED THIS: -



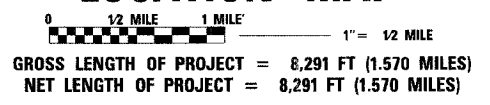
PROJECT ENDS GARFIELD BLVD (55TH STREET)
STA 23+33.92

PROJECT BEGINS GARFIELD BLVD (55TH STREET)
STA 20+10.33

PROJECT BEGINS S. WELLS ST
STA 535+32.53

PROJECT ENDS S. WELLS ST
STA 614+99.43

LOCATION MAP



RASPAL S. BAJWA
SHEET NOS.
11/30/05
EXPIRES DATE



JOHN A. LUKOWSKI
SHEET NOS.
11/30/05
EXPIRES DATE

STATE OF ILLINOIS
DEPARTMENT OF TRANSPORTATION
DIVISION OF HIGHWAYS

SUBMITTED March 19, 20 05
Dina O'Keefe / PP
DEPUTY DIRECTOR OF HIGHWAYS, REGION ENGINEER

May 13, 20 05
Mike Nunez / PD
ENGINEER OF DESIGN AND ENVIRONMENT

May 13, 20 05
Victor Mader / PD
DIRECTOR OF HIGHWAYS, CHIEF ENGINEER

PRINTED BY THE AUTHORITY OF THE STATE OF ILLINOIS



INFRASTRUCTURE ENGINEERING, INC.

CTE ENGINEERS
CONSOER TOWNSEND ENVRODYNE ENGINEERS, INC.
303 EAST WACKER DRIVE, SUITE 600
CHICAGO ILLINOIS 60601-5212, PHONE: (312) 938-0300

Rev. 5-26-05

DISTRICT ONE DESIGN/CONSULTANT SERVICES PROJECT MANAGER
RAJENDRA SHAH (847) 705-4437

SUMMARY OF QUANTITIES

F.A.I. RTE.	SECTION	COUNTY	TOTAL SHEETS	SHEET NO.
90/94	2004-0561	COOK	47	7
STA.		TO STA.		
FED. ROAD DIST. NO. 1		ILLINOIS	FED. AID PROJECT	
62795				

CODE NO.	ITEM	UNIT	QUANTITY	ROADWAY	
				1000 URBAN	100% STATE
21101615	TOPSOIL FURNISH AND PLACE, 4"	SQ YD	1,091	1,091	
25200110	SODDING, SALT TOLERANT	SQ YD	1,091	1,091	
30103000	SHAPING AND GRADING ROADWAY	UNIT	83	83	
31101200	SUB-BASE GRANULAR MATERIAL, TYPE B 4"	SQ YD	516	516	
42001300	PROTECTIVE COAT	SQ YD	5,938	5,938	
42300400	PORTLAND CEMENT CONCRETE DRIVEWAY PAVEMENT, 8 INCH	SQ YD	399	399	
42400200	PORTLAND CEMENT CONCRETE SIDEWALK, 5 INCH	SQ FT	48,563	48,563	
44201771	CLASS D PATCHES, TYPE IV, 10"	SQ YD	30	30	
* 56109210	WATER VALVES TO BE ADJUSTED	EACH	10	10	
* 56500300	DOMESTIC METER VAULTS TO BE ADJUSTED	EACH	53	53	
* 56500600	DOMESTIC WATER SERVICE BOXES TO BE ADJUSTED	EACH	113	113	
60600605	CONCRETE CURB, TYPE B	FOOT	237	237	
* 63000000	STEEL PLATE BEAM GUARDRAIL, TYPE A	FOOT	234	234	
67100100	MOBILIZATION	L SUM	1	1	
70102630	TRAFFIC CONTROL AND PROTECTION, STANDARD 701601	L SUM	1	1	
70102640	TRAFFIC CONTROL AND PROTECTION, STANDARD 701801	L SUM	1	1	
X0322256	TEMPORARY INFORMATION SIGNING	SQ FT	26	26	
X0324872	CAST IN PLACE TACTILE/DETECTABLE WARNING SURFACE SYSTEM FOR RAMPS FOR PEOPLE WITH DISABILITIES	SQ FT	324	324	
X7015000	CHANGEABLE MESSAGE SIGN	CAL MO	2	2	
Z0013798	CONSTRUCTION LAYOUT	L SUM	1	1	
Z0076600	TRAINERS	HOUR			
XX001109	PORTLAND CEMENT CONCRETE ALLEY PAVEMENT, 8"	SQ YD	117	117	
XX152400	SAND CUSHION, 3-INCH	CU YD	450	450	



0-1080
* SPECIALTY ITEMS

REVISIONS	
NAME	DATE

ILLINOIS DEPARTMENT OF TRANSPORTATION
F.A.I. 90/94 (DAN RYAN EXPRESSWAY)
59th ST TO 47th ST (WELLS ST SIDEWALKS)

SUMMARY OF QUANTITIES

SCALE: NONE DRAWN BY: LC
DATE: MARCH 4, 2005 CHECKED BY: JAL

03/02/2005 03:34:52 PM