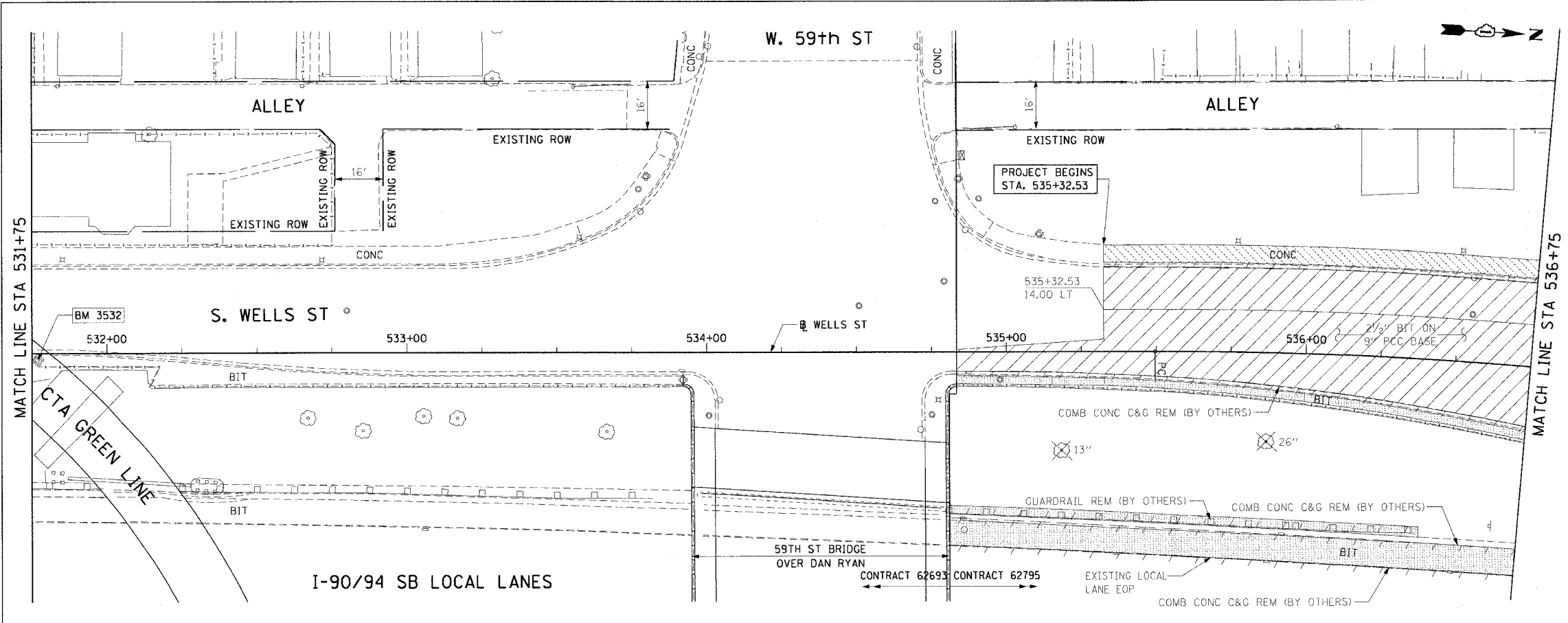


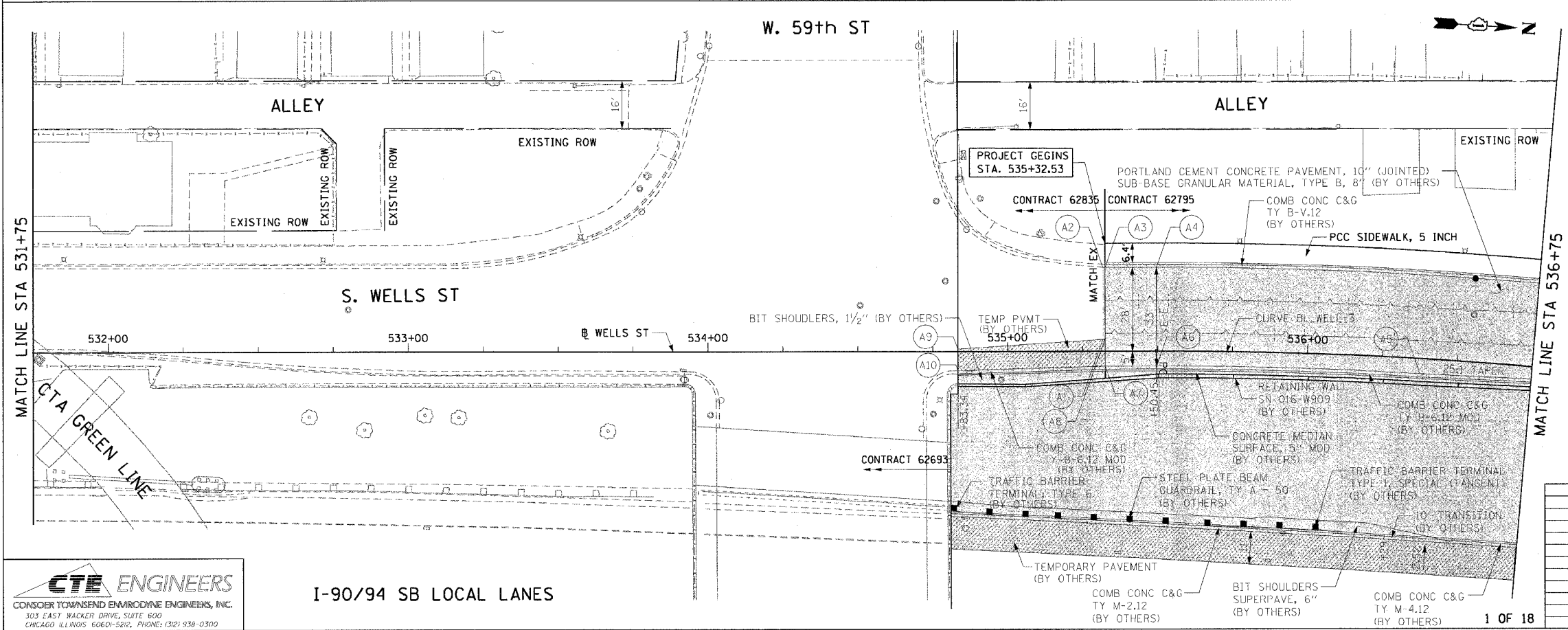
F.A.I. RTE.	SECTION	COUNTY	TOTAL SHEETS	SHEET NO.
90/94	2004-0561	COOK	47	21
STA. 531+75		TO STA. 536+75		
FED. ROAD DIST. NO. 1 ILLINOIS FED. AID PROJECT				

62795



- LEGEND:
- PAVEMENT REMOVAL (BY OTHERS)
 - MEDIAN REMOVAL (BY OTHERS)
 - LINEAR REMOVALS (BY OTHERS)
 - SIDEWALK REMOVAL (BY OTHERS)
 - APPROACH SLAB REMOVAL (BY OTHERS)
 - DRIVEWAY PAVEMENT REMOVAL (BY OTHERS)
 - PAVED SHOULDER REMOVAL (BY OTHERS)
 - TREE REMOVAL (WITH SIZE) (BY OTHERS)

EXISTING CONDITIONS AND REMOVAL
PROPOSED IMPROVEMENTS



- LEGEND:
- WORK TO BE DONE BY OTHERS

NOTE:
1. SEE SIDEWALK DETAIL ON SHEET 41.

PT.	STATION	OFFSET	PT.	STATION	OFFSET
A1	531+31.78	4.00' LT	A6	535+49.67	5.00' RT
A2	535+31.78	28.05' LT	A7	535+32.53	5.00' RT
A3	535+32.53	28.00' LT	A8	535+32.53	4.03' LT
A4	535+49.67	28.00' LT	A9	534+83.41	0.85' LT
A5	536+37.83	5.00' RT	A10	534+83.41	6.39' RT

REVISIONS	
NAME	DATE

ILLINOIS DEPARTMENT OF TRANSPORTATION
F.A.I. 90/94 (DAN RYAN EXPRESSWAY)
59th ST TO 47th ST (WELLS ST SIDEWALKS)
EXISTING AND PROPOSED ROADWAY PLANS
WELLS STREET

SCALE: 1"=20'
DATE: MARCH 4, 2005

DRAWN BY: LC
CHECKED BY: JAL

CTE ENGINEERS
CONSER TOWNSEND ENVIRONMENTAL ENGINEERS, INC.
303 EAST WACKER DRIVE, SUITE 600
CHICAGO, ILLINOIS 60601-5212, PHONE: (312) 938-0300

I-90/94 SB LOCAL LANES

02/24/2005 05:20:22 PM