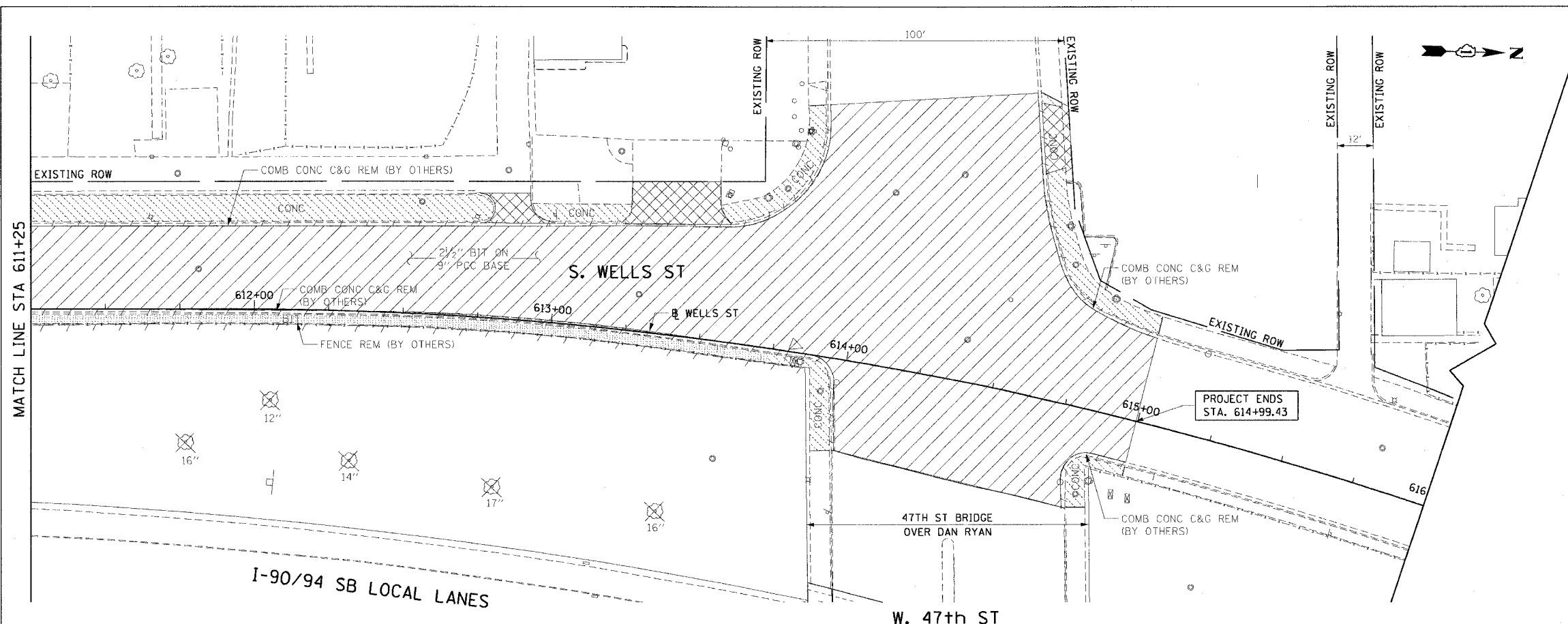


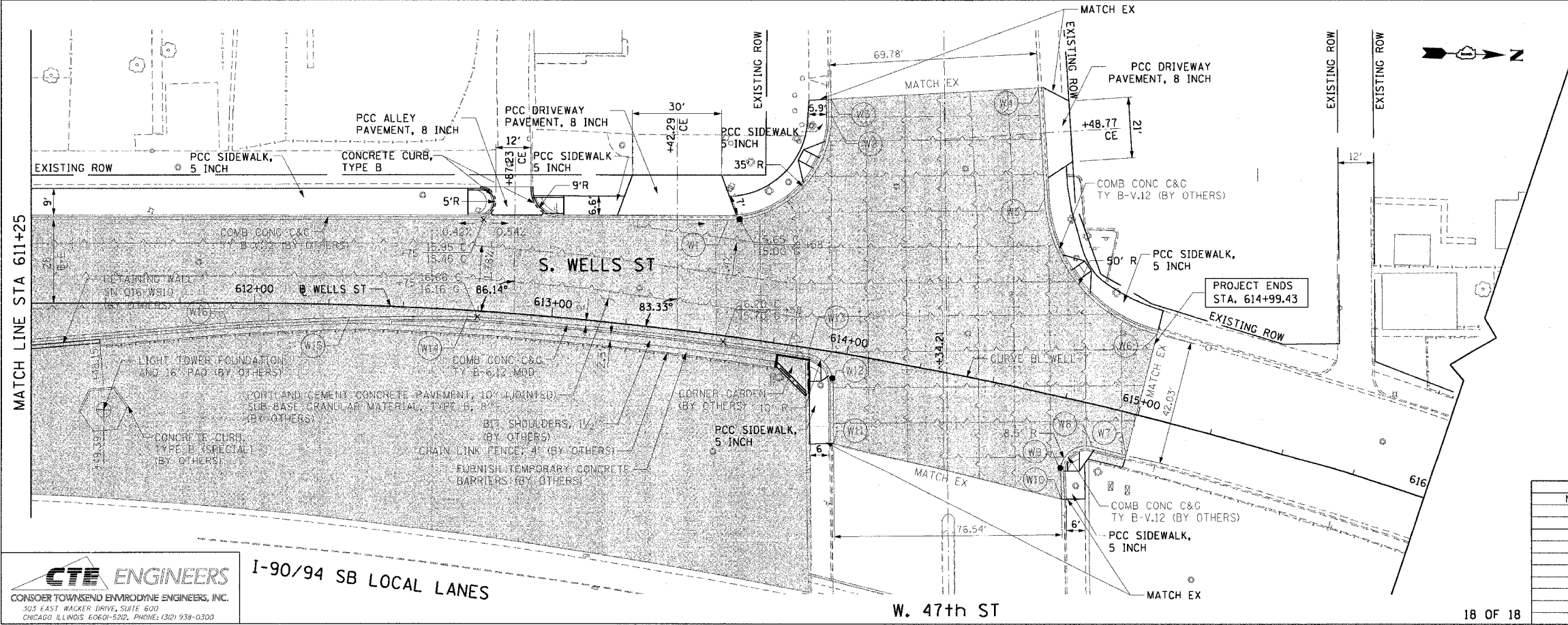
F.A.I. RTE.	SECTION	COUNTY	TOTAL SHEETS	SHEET NO.
90/94	2004-0561	COOK	47	38
STA. 611+25	TO STA. 614+99.43			
FED. ROAD DIST. NO. 1 ILLINOIS FED. AID PROJECT				

62795



- LEGEND:
- PAVEMENT REMOVAL (BY OTHERS)
 - MEDIAN REMOVAL (BY OTHERS)
 - LINEAR REMOVALS (BY OTHERS)
 - SIDEWALK REMOVAL (BY OTHERS)
 - APPROACH SLAB REMOVAL (BY OTHERS)
 - DRIVEWAY PAVEMENT REMOVAL (BY OTHERS)
 - PAVED SHOULDER REMOVAL (BY OTHERS)
 - TREE REMOVAL (WITH SIZE) (BY OTHERS)

EXISTING CONDITIONS AND REMOVAL
PROPOSED IMPROVEMENTS



- LEGEND:
- WORK TO BE DONE BY OTHERS

- NOTES:
1. SEE CURB DETAIL ON SHEETS 39 AND 44.
 2. SEE SIDEWALK RAMP DETAIL ON SHEET 40.
 3. SEE SIDEWALK DETAIL ON SHEET 41.
 4. SEE DRIVEWAY DETAIL ON SHEET 42.
 5. SEE ALLEY DETAIL ON SHEET 43.

PT.	STATION	OFFSET	PT.	STATION	OFFSET
W1	613+54.32	38.77' LT	W9	614+78.97	24.64' RT
W2	613+82.72	78.66' LT	W10	614+81.54	33.81' RT
W3	613+81.83	84.11' LT	W11	614+00.53	30.37' RT
W4	614+45.12	100.15' LT	W12	613+96.95	10.32' RT
W5	614+54.15	64.07' LT	W13	613+87.01	2.00' RT
W6	614+99.61	28.00' LT	W14	612+70.81	2.00' RT
W7	614+99.33	14.03' RT	W15	612+32.10	4.33' RT
W8	614+87.47	13.88' RT	W16	611+90.82	6.75' RT

REVISIONS	
NAME	DATE

ILLINOIS DEPARTMENT OF TRANSPORTATION
F.A.I. 90/94 (DAN RYAN EXPRESSWAY)
59th ST TO 47th ST (WELLS ST SIDEWALKS)
EXISTING AND PROPOSED ROADWAY PLANS
WELLS STREET

SCALE: 1"=20'
DATE: MARCH 4, 2005

DRAWN BY: LC
CHECKED BY: JAL

CTE ENGINEERS
CONSOER TOWNSEND ENVIRONMENTAL ENGINEERS, INC.
303 EAST WACKER DRIVE, SUITE 600
CHICAGO ILLINOIS 60601-5212, PHONE: (312) 938-0300

I-90/94 SB LOCAL LANES

02/24/2005 05:22:05 PM