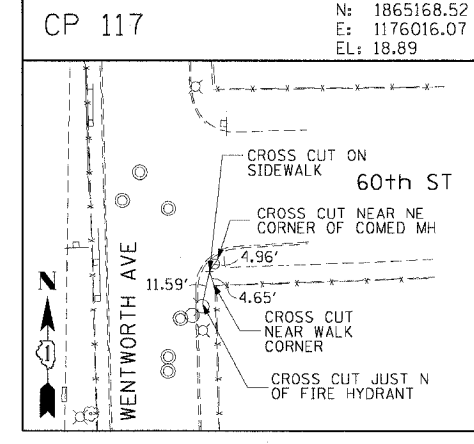
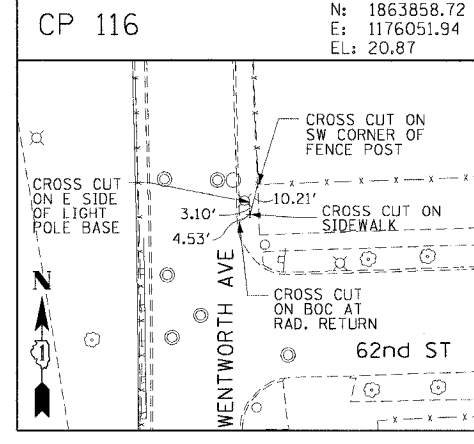
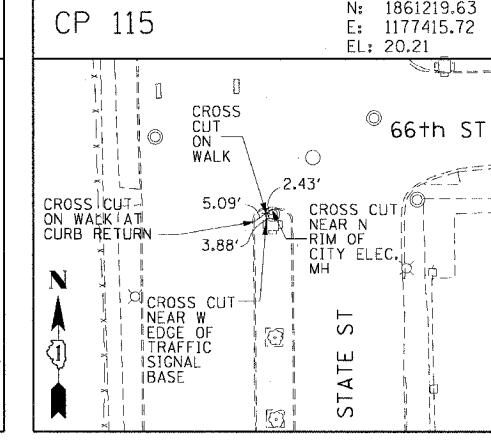
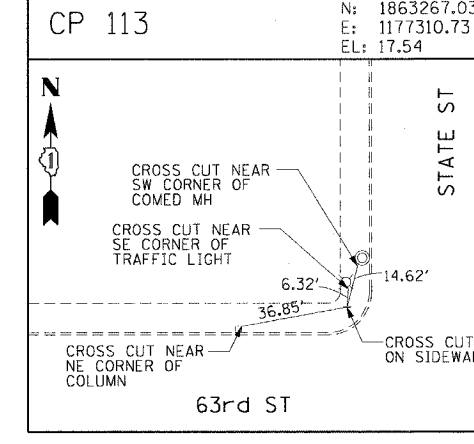
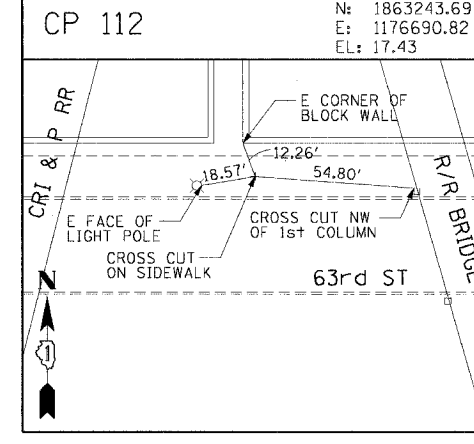
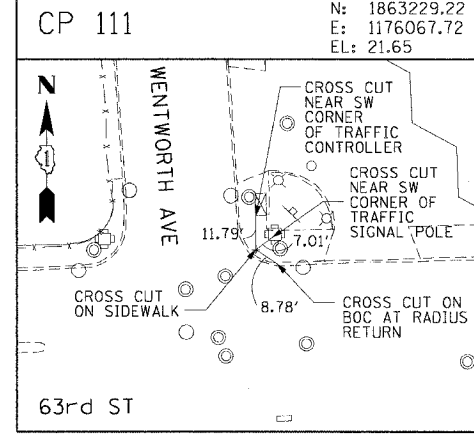
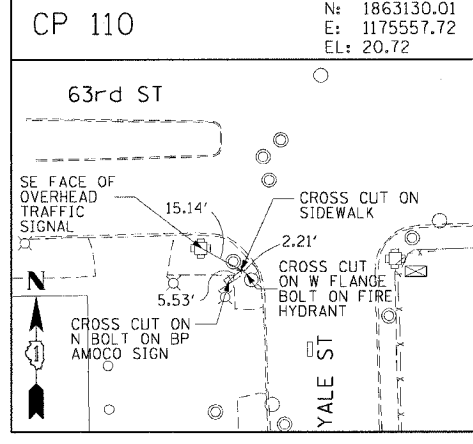
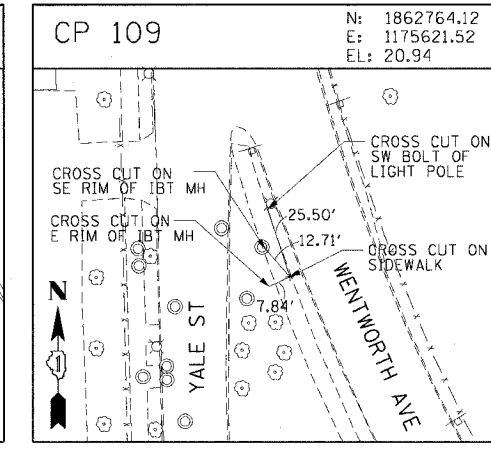
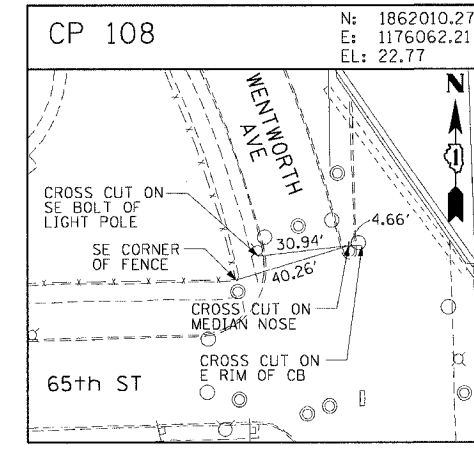
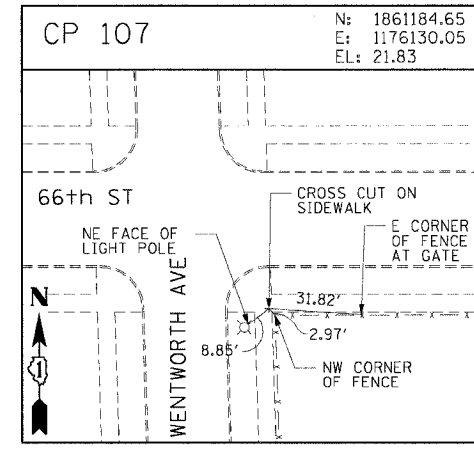
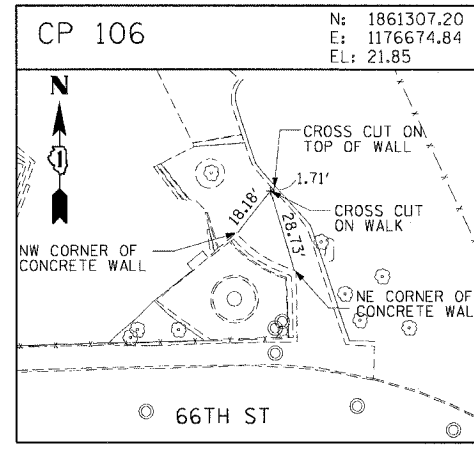
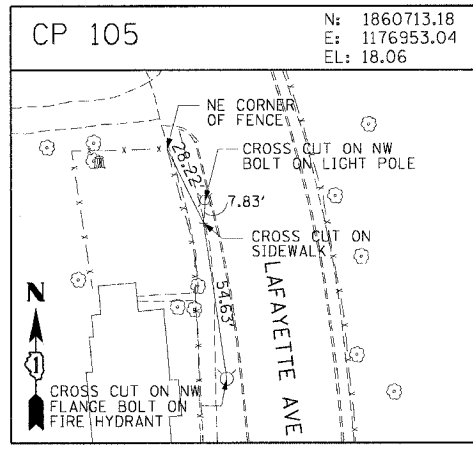
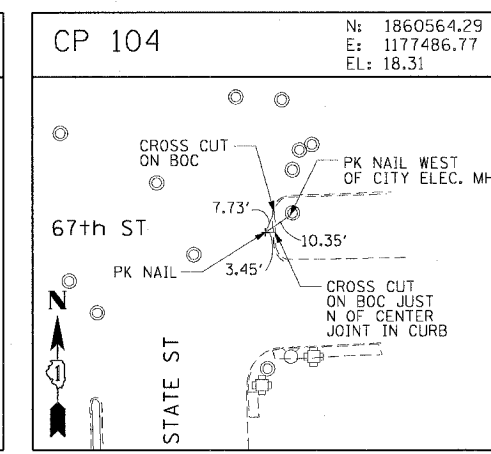
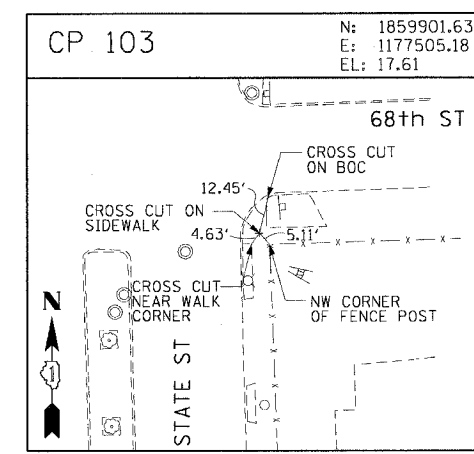
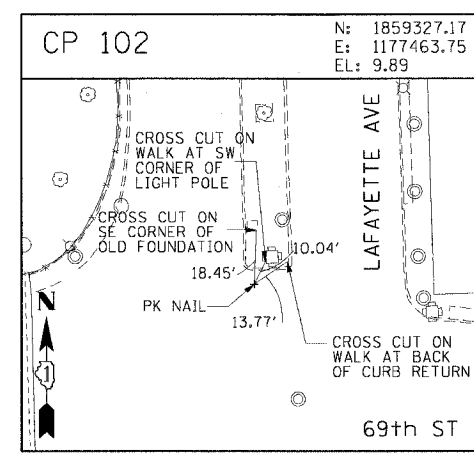
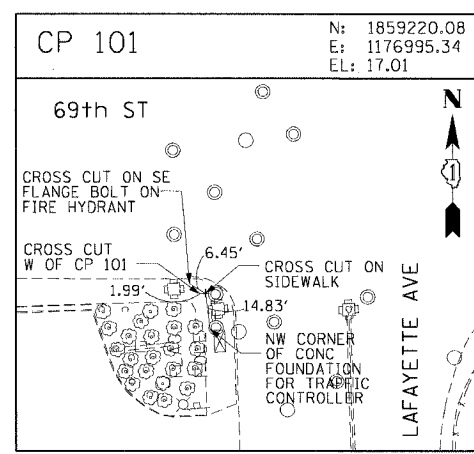
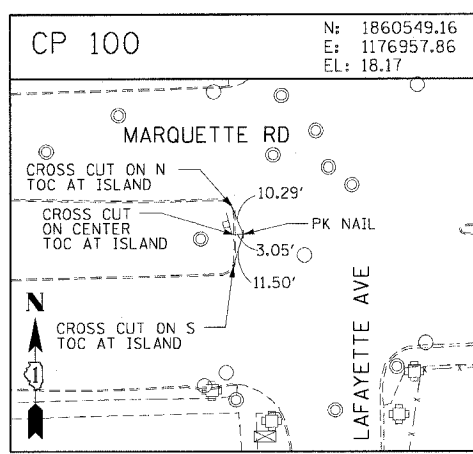


F.A.I. RTE.	SECTION	COUNTY	TOTAL SHEETS	SHEET NO.
90/94	2004-0571	COOK	47	17
STA.		TO STA.		
FED. ROAD DIST. NO. 1		ILLINOIS FED. AID PROJECT		
62796				



CTE ENGINEERS
 CONSIDER TOWNSEND ENVIRONMENTAL ENGINEERS, INC.
 303 EAST WALKER DRIVE, SUITE 600
 CHICAGO, ILLINOIS 60601-5912, PHONE: (312) 938-0300

REVISIONS	
NAME	DATE

ILLINOIS DEPARTMENT OF TRANSPORTATION
 F.A.I. 90/94 (DAN RYAN EXPRESSWAY)
 59th ST TO 47th ST (WENTWORTH AVE SIDEWALKS)
SURVEY TIES AND CONTROL POINTS
 SCALE: 1"=30'
 DATE: MARCH 4, 2005
 DRAWN BY: LC
 CHECKED BY: JAL

m:\p\0468\01\14-corr\9\road_corr\9\2\st\align\m\9\9\01\02\st