

F.A.I. RTE.	SECTION	COUNTY	TOTAL SHEETS	SHEET NO.
90/94	2004-094 I	COOK	40	1

**STATE OF ILLINOIS  
DEPARTMENT OF TRANSPORTATION  
DIVISION OF HIGHWAYS**

**D-91-419-01**

**INDEX OF SHEETS**

SHEET	DESCRIPTION
1	COVER SHEET
2	GENERAL NOTES AND PROJECT COMMITMENTS
3-4	SUGGESTED CONSTRUCTION SCHEDULE
5	SUMMARY OF QUANTITIES
6	PROPOSED TYPICAL SECTIONS
7	SCHEDULE OF QUANTITIES
8-18	ALIGNMENT PLANS, SURVEY TIES AND CONTROL POINTS
19-31	EXISTING AND PROPOSED ROADWAY PLANS
32-37	ROADWAY DETAILS
38-39	PLAT OF HIGHWAYS
40	TC-22 DISTRICT 1, TEMPORARY INFORMATION SIGNING

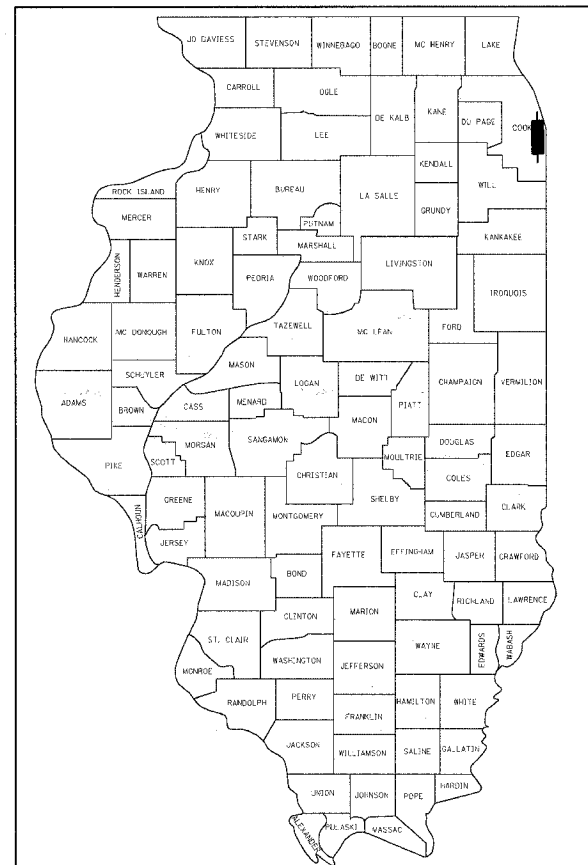
**IDOT HIGHWAY STANDARDS**

STANDARD	DESCRIPTION
000001-04	STANDARD SYMBOLS, ABBREVIATIONS, AND PATTERNS
001006	DECIMAL OF AN INCH AND OF A FOOT
606001-02	CONCRETE CURB AND COMBINATION CURB AND GUTTER
701601-04	LANE CLOSURE, MULTILANE, 1W OR 2W, WITH NON TRAVERSABLE MEDIAN
701801-03	LANE CLOSURE, MULTILANE, 1W OR 2W, CROSSWALK OR SIDEWALK CLOSURE FOR SPEEDS < 45 MPH
702001-05	TRAFFIC CONTROL DEVICES

# PLANS FOR PROPOSED FEDERAL AID HIGHWAY

**F.A.I. ROUTE 90/94 (DAN RYAN EXPRESSWAY)  
SECTION 2004-094 I**

## INSTALLATION OF SIDEWALKS, DRIVEWAYS, AND ALLEY RETURNS ALONG WENTWORTH AVENUE AND WELLS STREET BETWEEN 63RD STREET AND 59TH STREET COOK COUNTY C-91-359-04



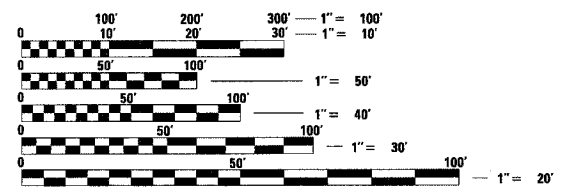
LOCATION OF SECTION INDICATED THUS: ———

**PROJECT LOCATED IN CITY OF CHICAGO**

**DESIGN DESIGNATION**

WENTWORTH AVE: 6259 (20) URBAN COLLECTOR  
WELLS ST: 8275 (20) URBAN COLLECTOR

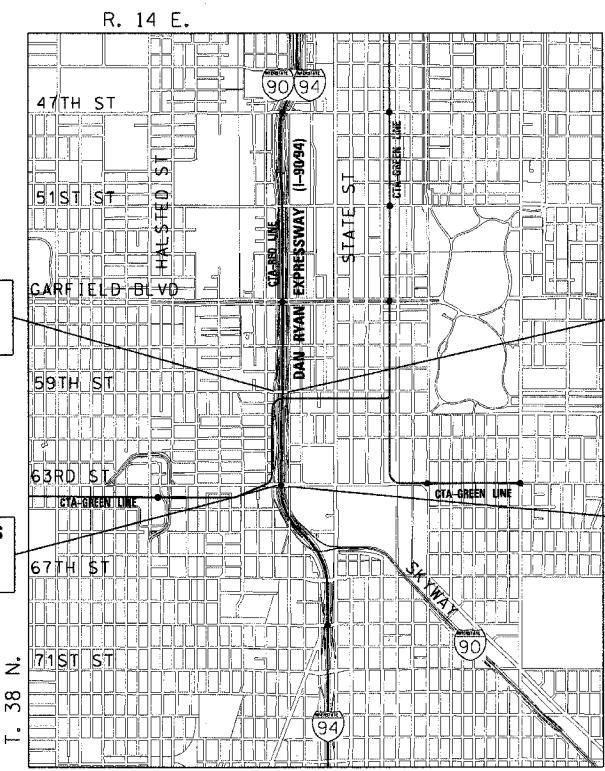
	ADT (2020)		DESIGN POSTED SPEED	
	ADT	DESIGN SPEED	POSTED SPEED	DESIGN SPEED
FRONTAGE ROADS:				
WENTWORTH AVE	11,000	30	25	
WELLS ST	15,000	30	25	



FULL SIZE PLANS HAVE BEEN PREPARED USING STANDARD ENGINEERING SCALES. REDUCED SIZED PLANS WILL NOT CONFORM TO STANDARD SCALES. IN MAKING MEASUREMENTS ON REDUCED PLANS, THE ABOVE SCALES MAY BE USED.

DIGGER:  
CHICAGO UTILITY ALERT NETWORK  
(312) 744-7000

**CONTRACT NO. 62835**



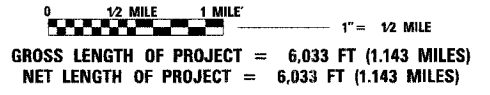
PROJECT ENDS  
S. WELLS ST  
STA 535 + 32.53

PROJECT ENDS  
S. WENTWORTH AVE  
STA 131 + 93.21

PROJECT BEGINS  
S. WELLS ST  
STA 506 + 92.81

PROJECT BEGINS  
S. WENTWORTH AVE  
STA 100 + 00.10

**LOCATION MAP**



*Robert M. Goveia*  
ROBERT M. GOVEIA  
EXPIRES 11/30/05

STATE OF ILLINOIS  
DEPARTMENT OF TRANSPORTATION  
DIVISION OF HIGHWAYS

SUBMITTED March 22, 20 05

*Dina O'Keefe*  
DEPUTY DIRECTOR OF HIGHWAYS, REGION ENGINEER

May 13, 20 05

*Mike Nune*  
ENGINEER OF DESIGN AND ENVIRONMENT

May 13, 20 05

*Victor Modesto*  
DIRECTOR OF HIGHWAYS, CHIEF ENGINEER

**PRINTED BY THE AUTHORITY  
OF THE STATE OF ILLINOIS**

**CTE ENGINEERS**  
CONSOER TOWNSEND ENVIRODYNE ENGINEERS, INC.  
303 EAST WACKER DRIVE, SUITE 600  
CHICAGO ILLINOIS 60601-5212, PHONE: (312) 938-0300

Rev. 5-26-05

DISTRICT ONE DESIGN/CONSULTANT SERVICES PROJECT MANAGER  
RAJENDRA SHAH (847) 705-4437