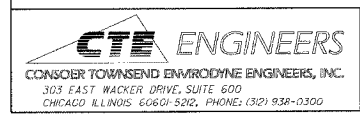
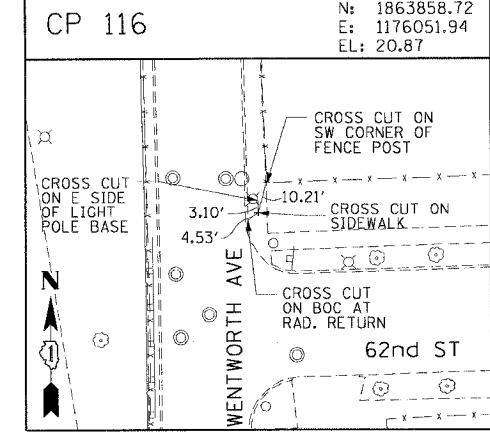
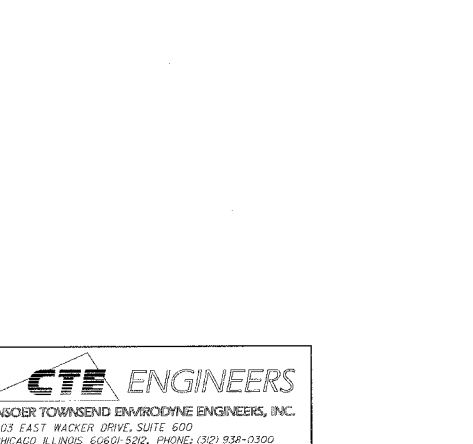
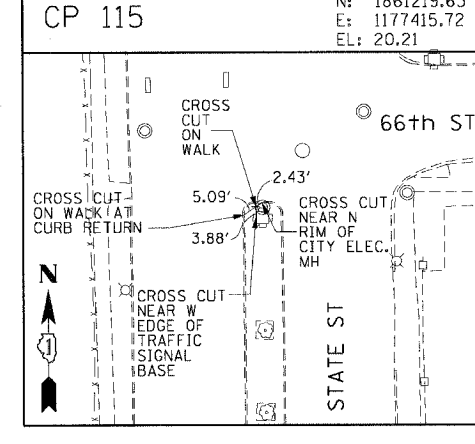
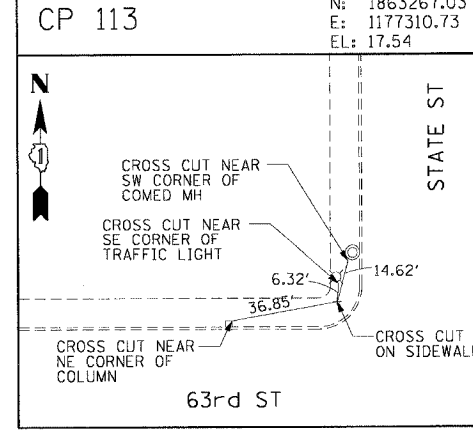
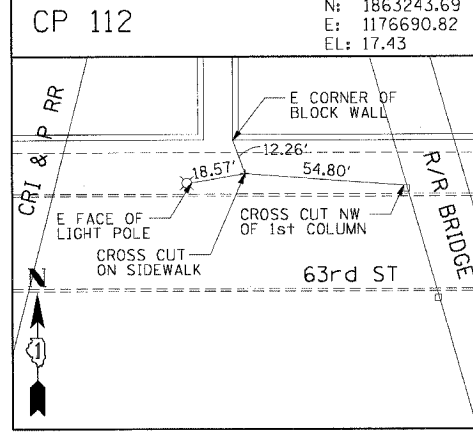
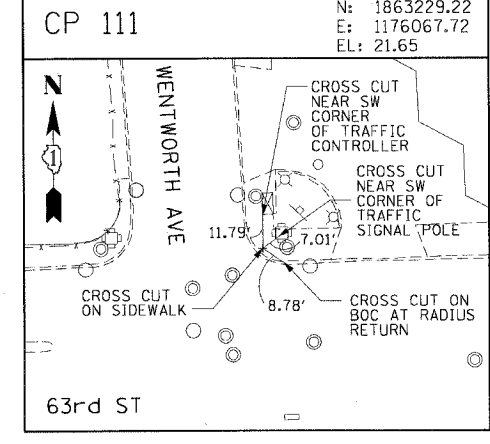
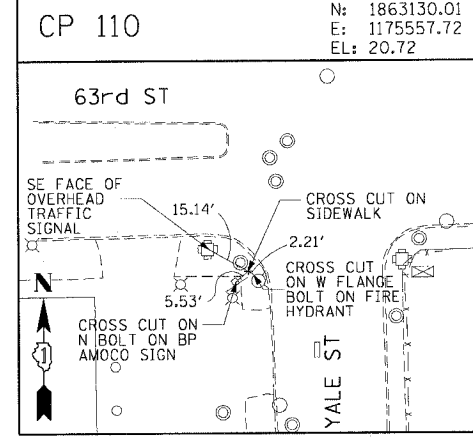
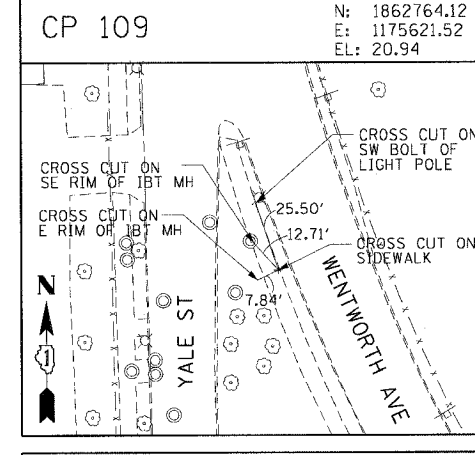
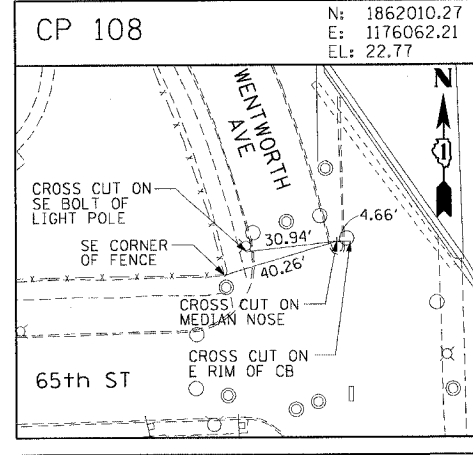
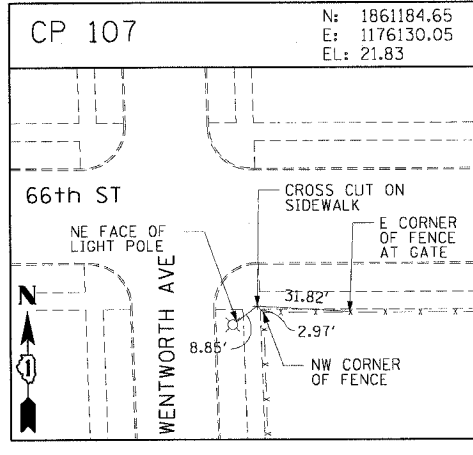
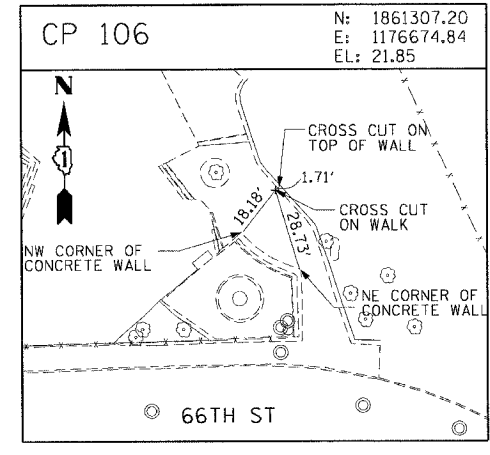
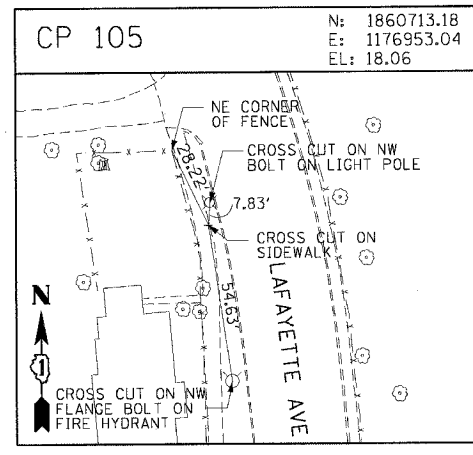
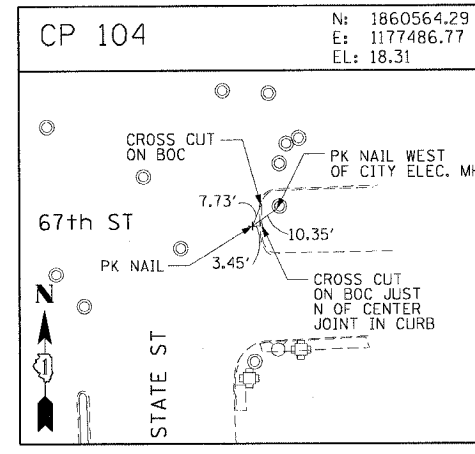
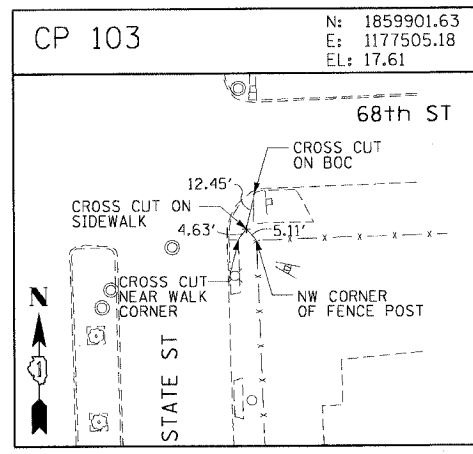
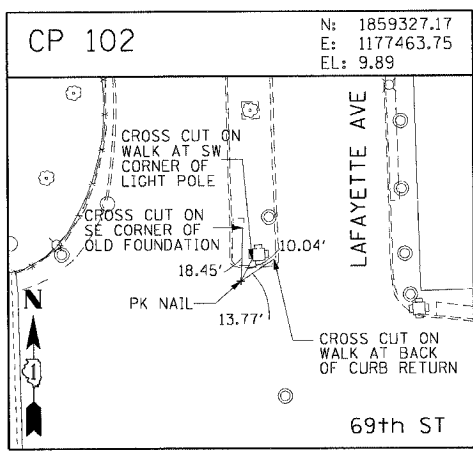
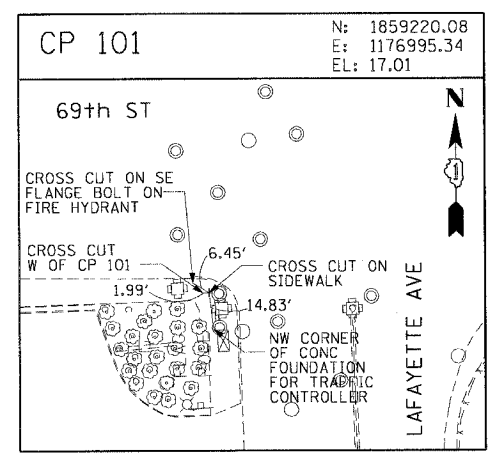
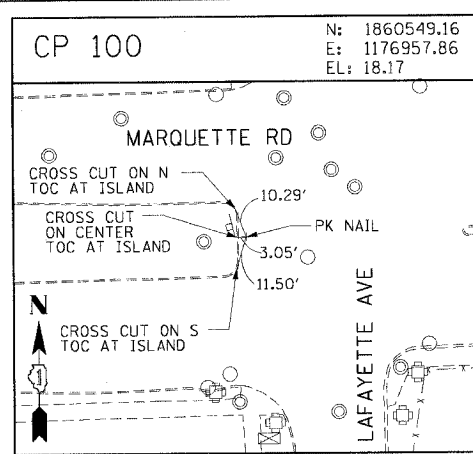


F.A.I. RTE.	SECTION	COUNTY	TOTAL SHEETS	SHEET NO.
90/94	2004-094 I	COOK	40	15
STA.		TO STA.		
FED. ROAD DIST. NO. 1		ILLINOIS FED. AID PROJECT		
62835				



REVISIONS	
NAME	DATE

ILLINOIS DEPARTMENT OF TRANSPORTATION  
 F.A.I. 90/94 (DAN RYAN EXPRESSWAY)  
 63rd ST TO 59th ST (SIDEWALKS & DRIVEWAYS)

**SURVEY TIES AND CONTROL POINTS**

SCALE: 1"=30'  
 DATE: MARCH 04, 2005

DRAWN BY: MRK  
 CHECKED BY: JAL

03/01/2005 10:47:38 AM  
 n:\p\0465\civil\465\cont\se\val\465\cont\se\val\90\94\15.dwg