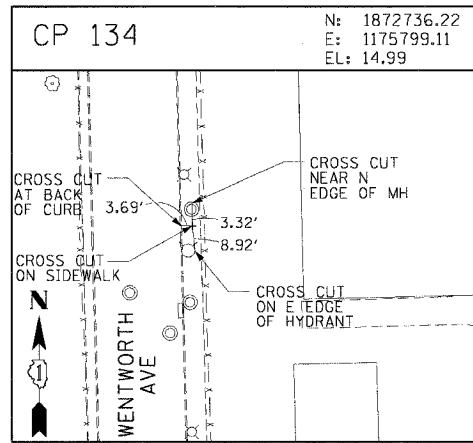
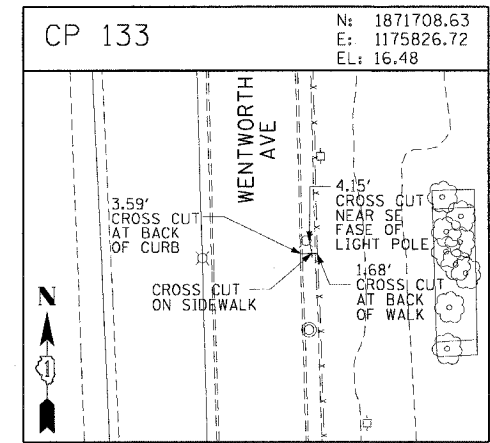
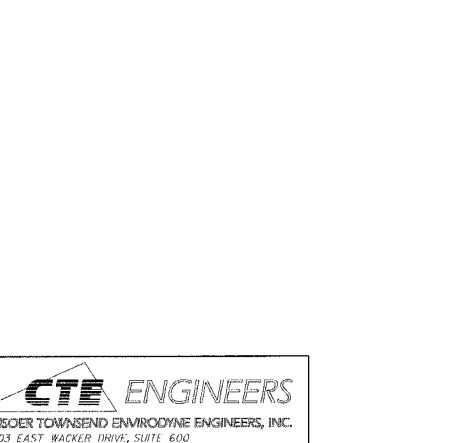
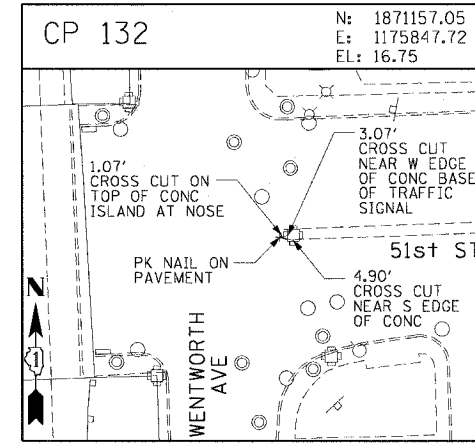
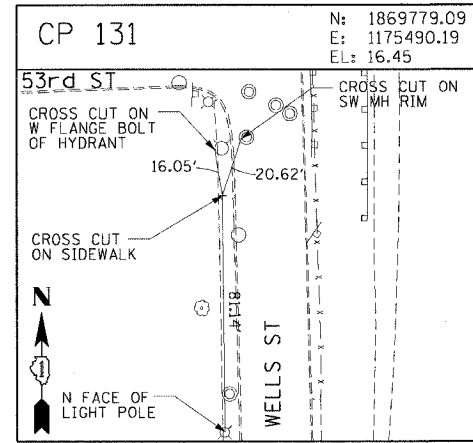
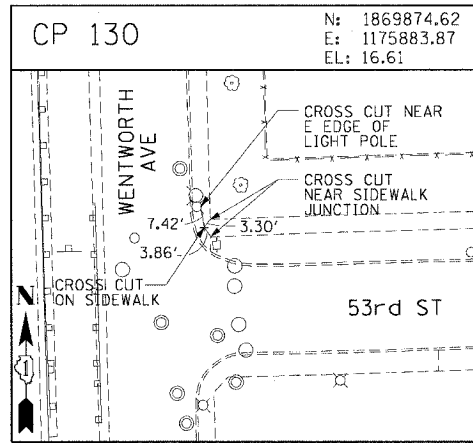
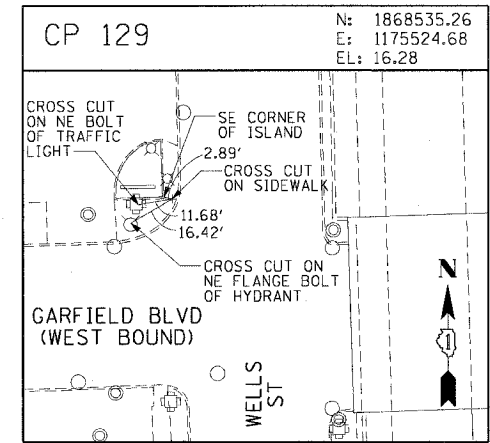
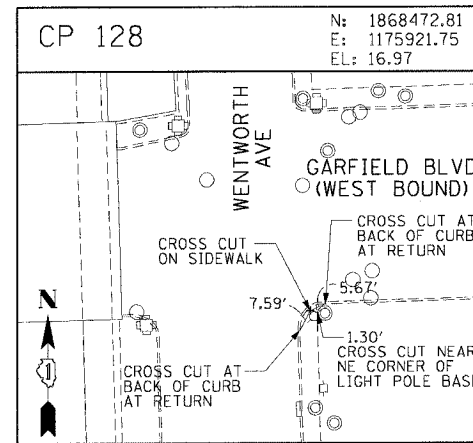
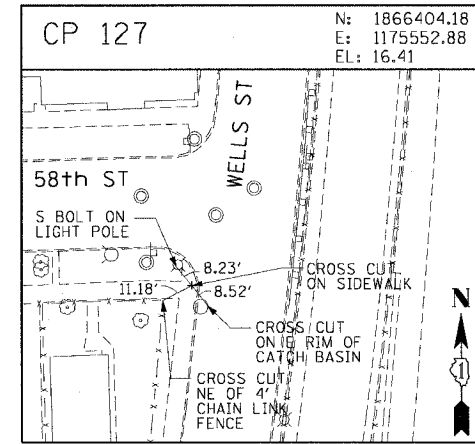
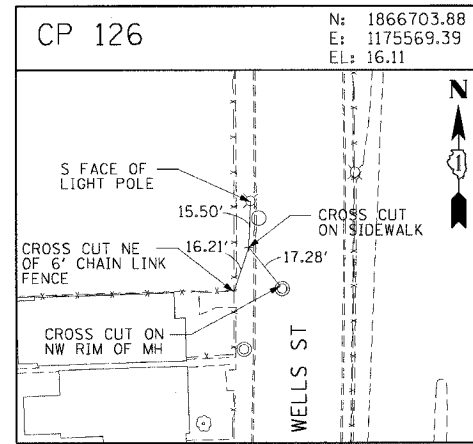
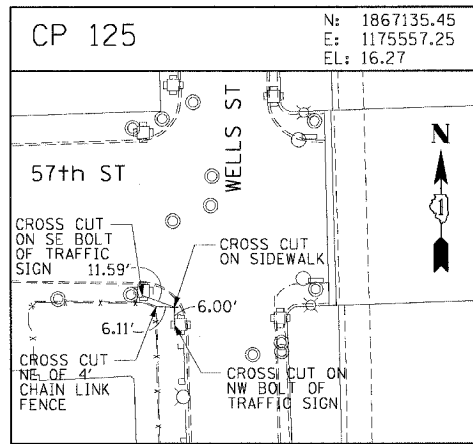
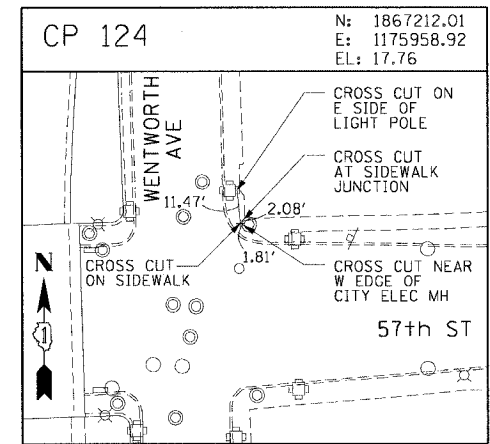
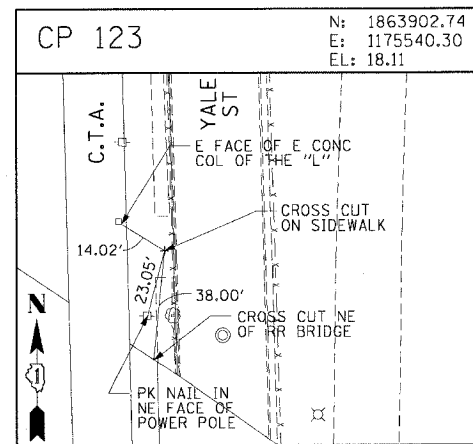
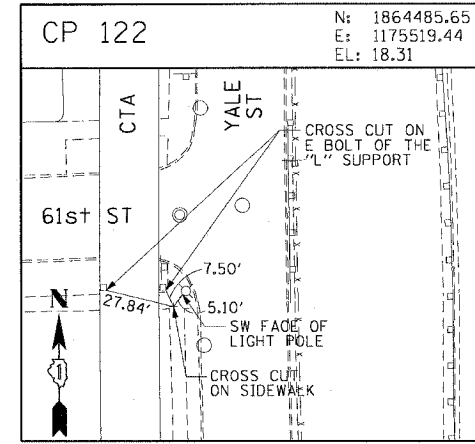
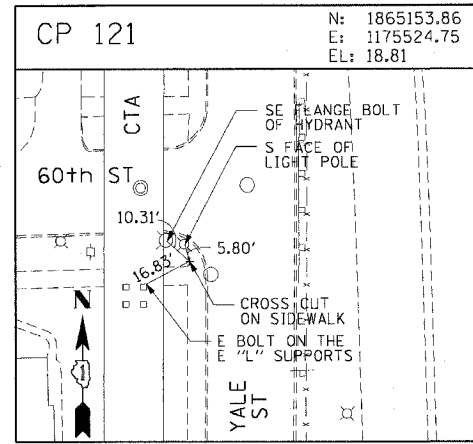
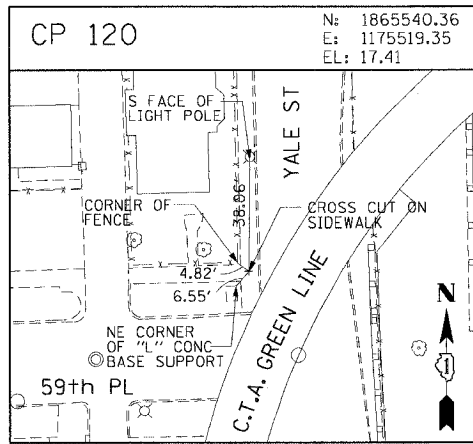
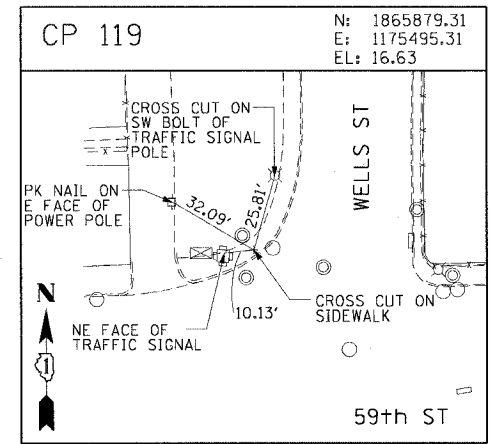
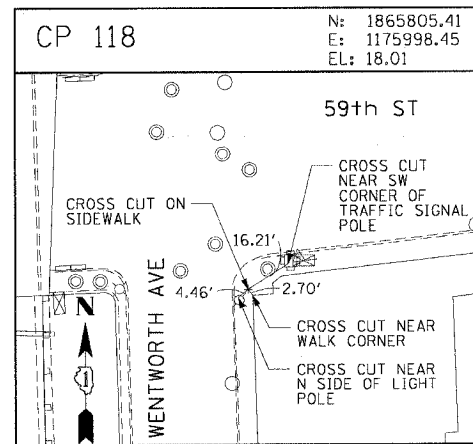


F.A.I. RTE.	SECTION	COUNTY	TOTAL SHEETS	SHEET NO.
90/94	2004-094 1	COOK	40	16
STA.	TO STA.			
FED. ROAD DIST. NO. 1		ILLINOIS	FED. AID PROJECT	
62835				



CTE ENGINEERS
CONSIDER TOWNSEND ENVIRONMENTAL ENGINEERS, INC.
303 EAST WACKER DRIVE, SUITE 600
CHICAGO, ILLINOIS 60601-5202, PHONE: (312) 938-0300

REVISIONS	
NAME	DATE

ILLINOIS DEPARTMENT OF TRANSPORTATION
F.A.I. 90/94 (DAN RYAN EXPRESSWAY)
63rd ST TO 59th ST (SIDEWALKS & DRIVEWAYS)

SURVEY TIES AND CONTROL POINTS

SCALE: 1"=30'
DATE: MARCH 04, 2005

DRAWN BY: MRK
CHECKED BY: JAL

10-47-59 AM 03/01/2005