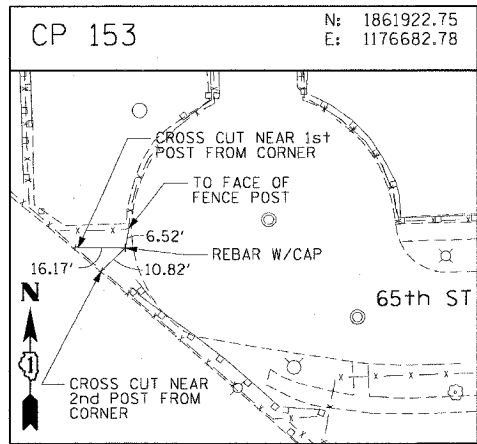
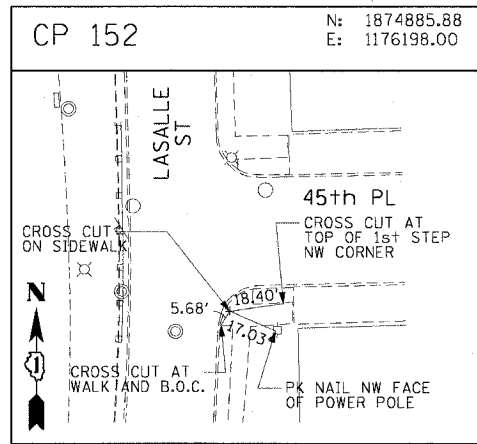
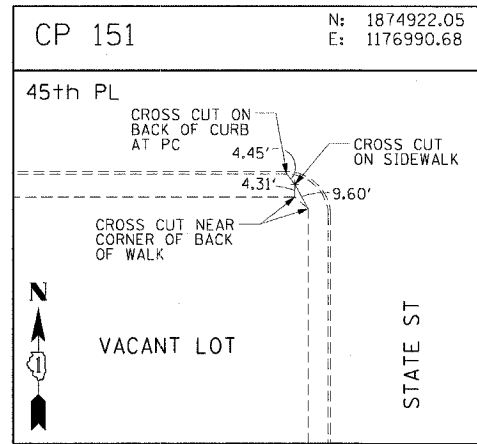
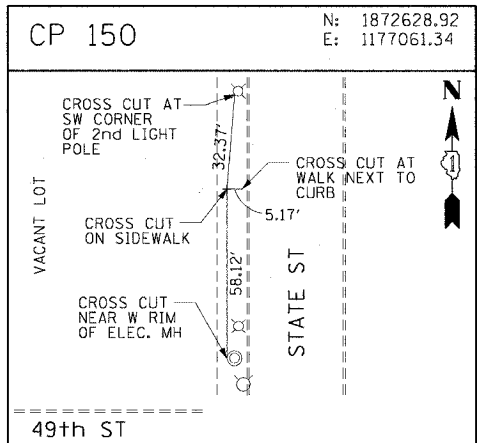
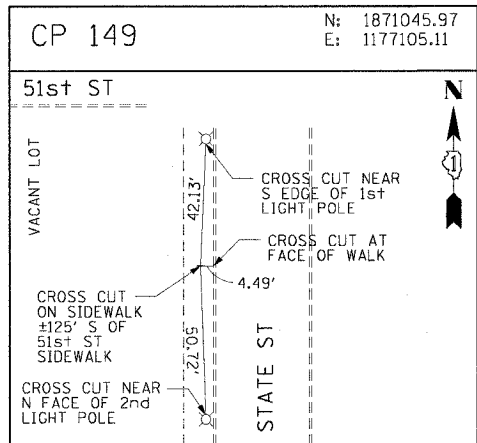
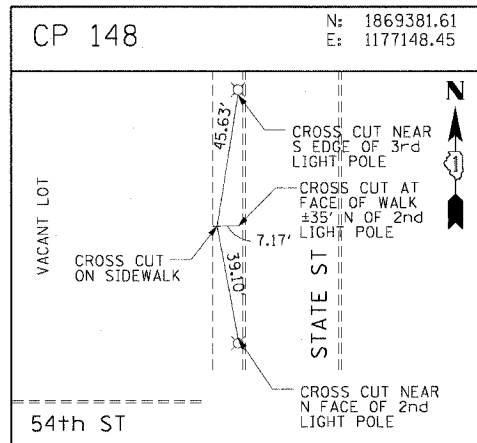
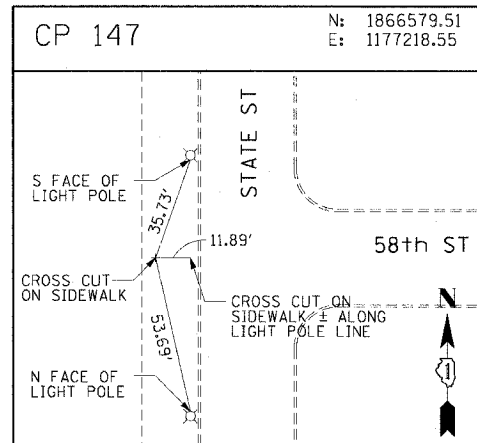
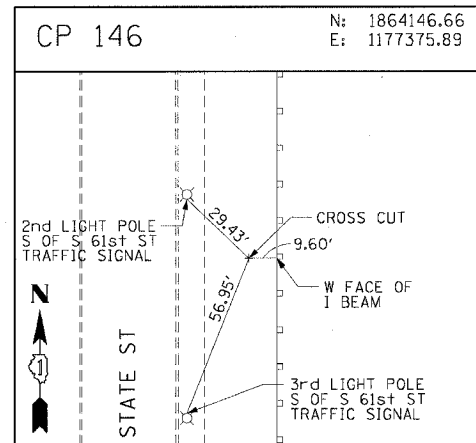
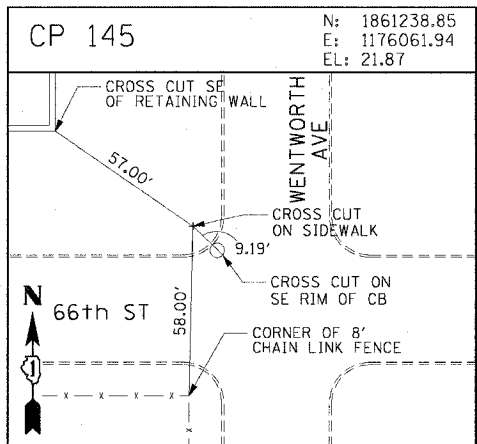
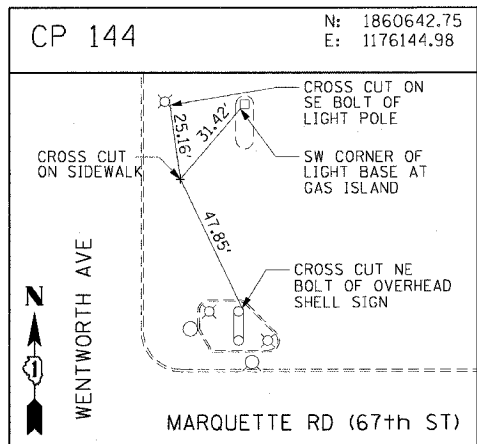
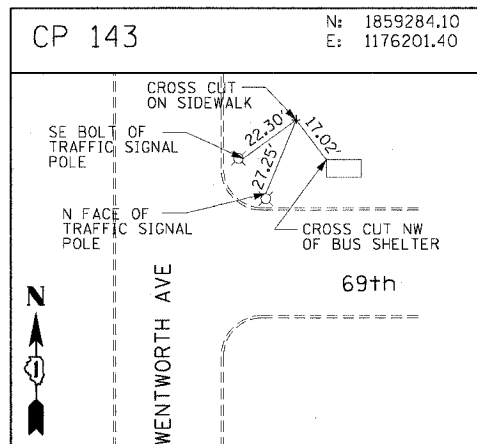
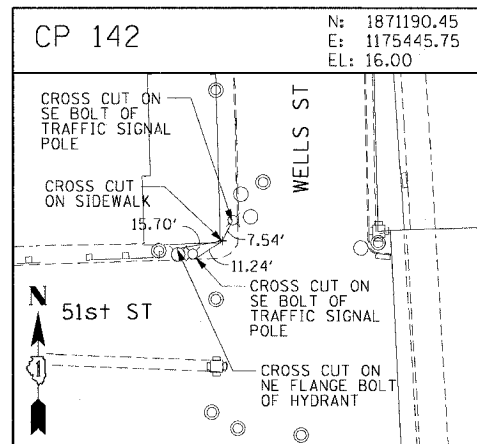
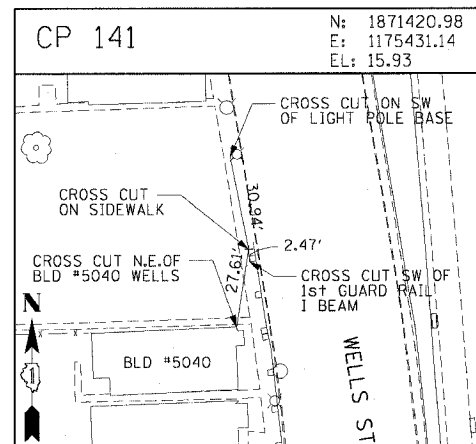
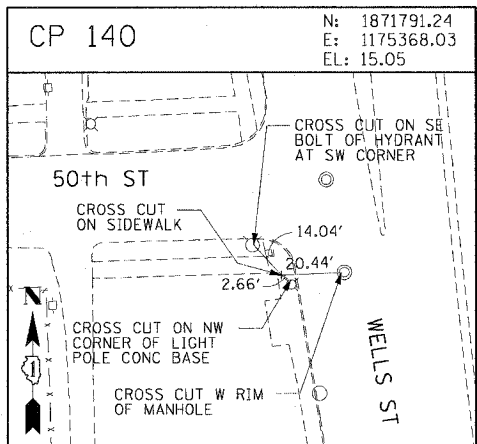
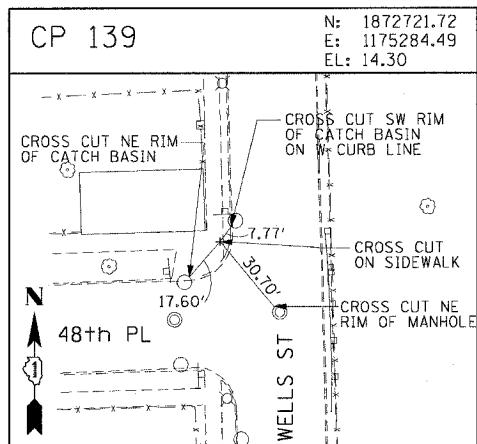
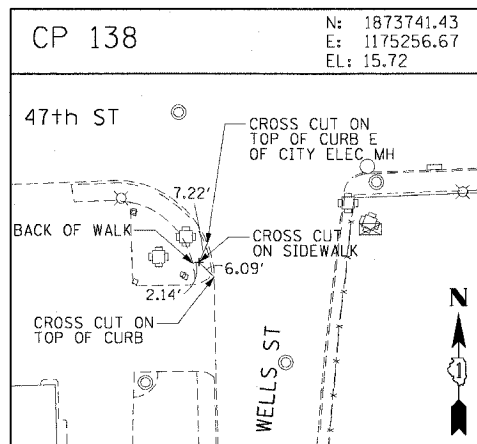
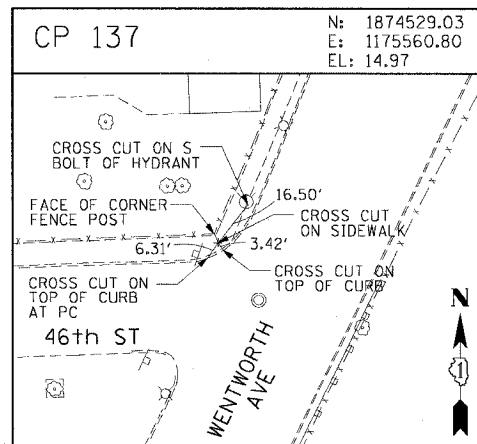
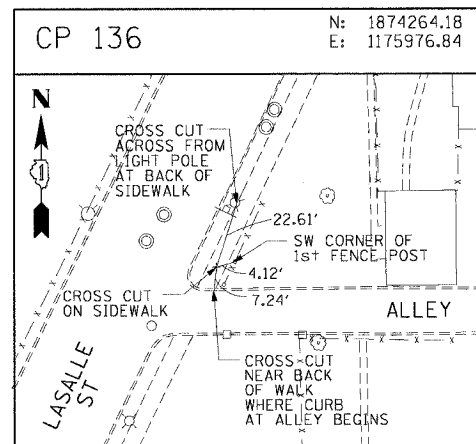


F.A.I. RTE. 90/94	SECTION 2004-096 PM	COUNTY COOK	TOTAL SHEETS 23	SHEET NO. 15
STA.		TO STA.		
FED. ROAD DIST. NO. 1 ILLINOIS FED. AID PROJECT				
62837				



CTE ENGINEERS
CONSEOR TOWNSEND ENVIRONMENTAL ENGINEERS, INC.
303 EAST WACKER DRIVE, SUITE 600
CHICAGO, ILLINOIS 60601-5212, PHONE: (312) 938-0300

REVISIONS	
NAME	DATE

ILLINOIS DEPARTMENT OF TRANSPORTATION
F.A.I. 90/94 (DAN RYAN EXPRESSWAY)
63rd ST TO 59th ST (PAVEMENT MARKINGS)
SURVEY TIES AND CONTROL POINTS
SCALE: 1"=30'
DATE: March 4, 2005
DRAWN BY: MRK
CHECKED BY: JAL

m:\046466\1\146-c1r1\50.dwg c1r1\gcs05.sfr\ac05c1032a.sfr 3/2/05 2:24 PM