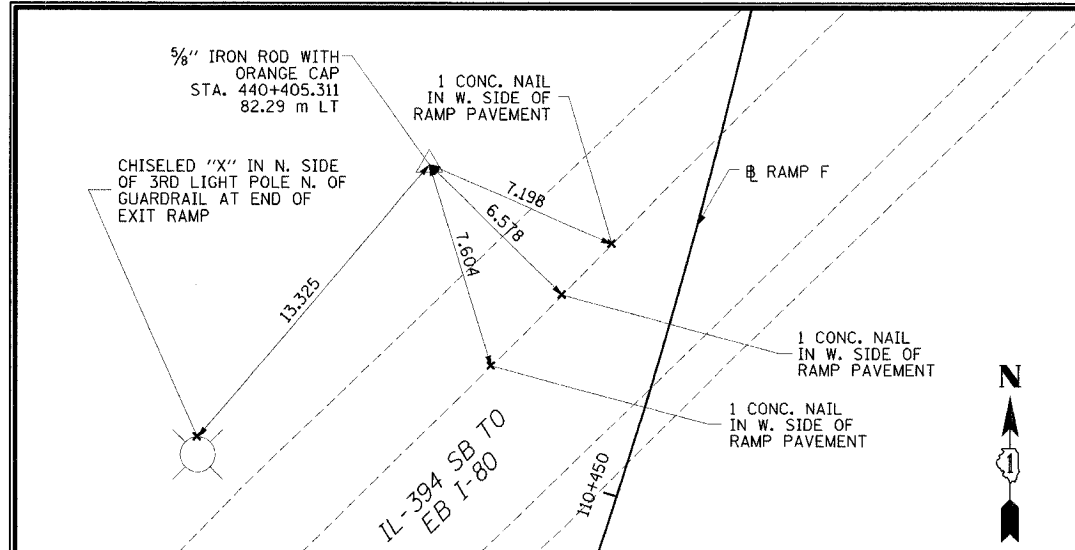
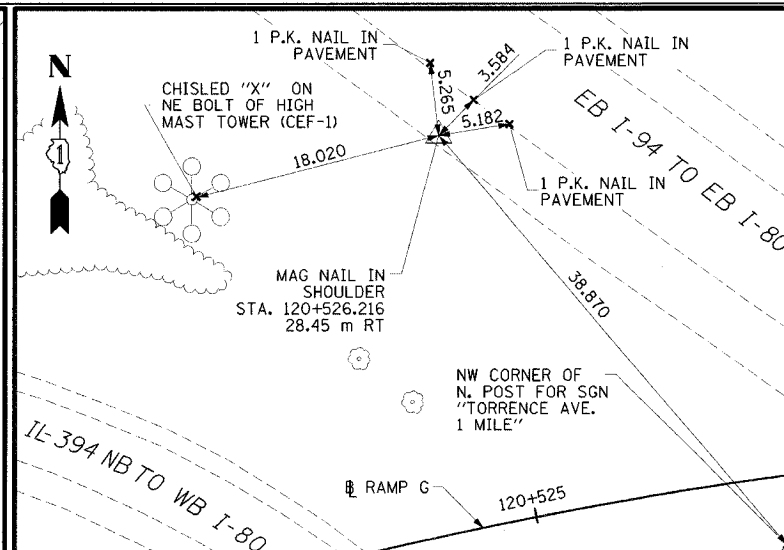


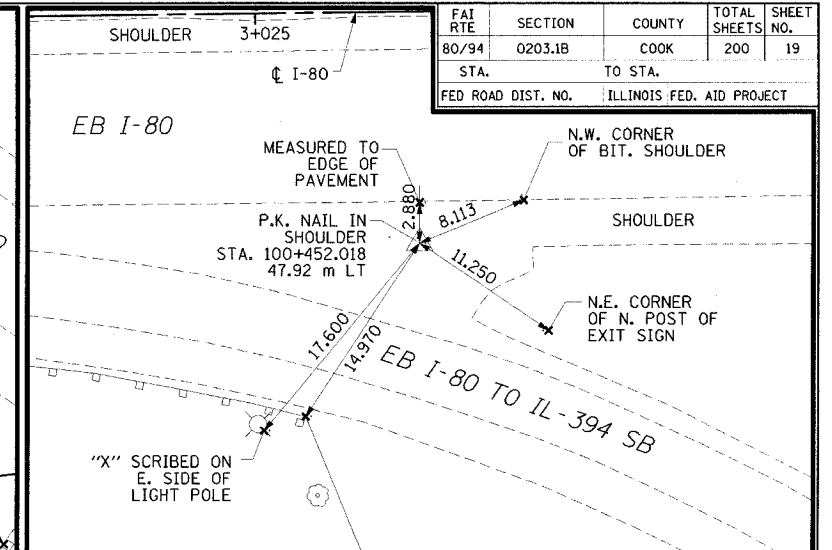
FBI	SECTION	COUNTY	TOTAL SHEETS	SHEET NO.
80/94	0203.1B	COOK	200	19
STA.		TO STA.		
FED ROAD DIST. NO.		ILLINOIS FED. AID PROJECT		



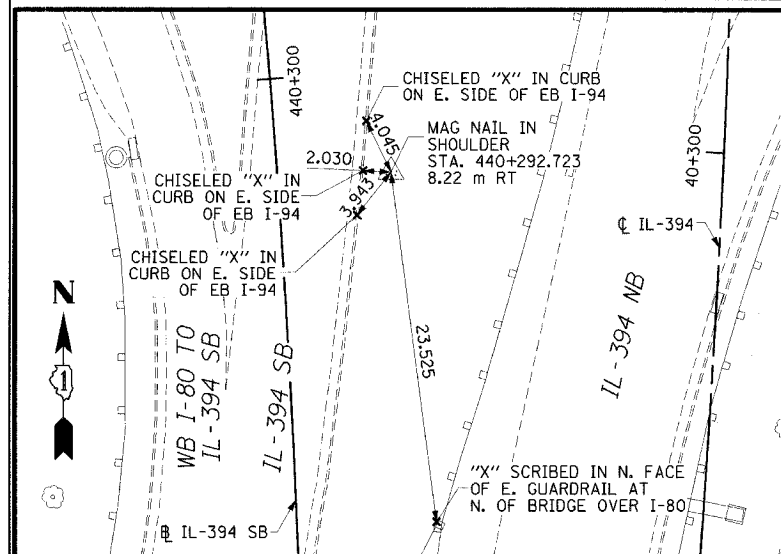
ACE #182 NORTHING: 545666.868 EASTING: 362567.130 ELEVATION = 184.343



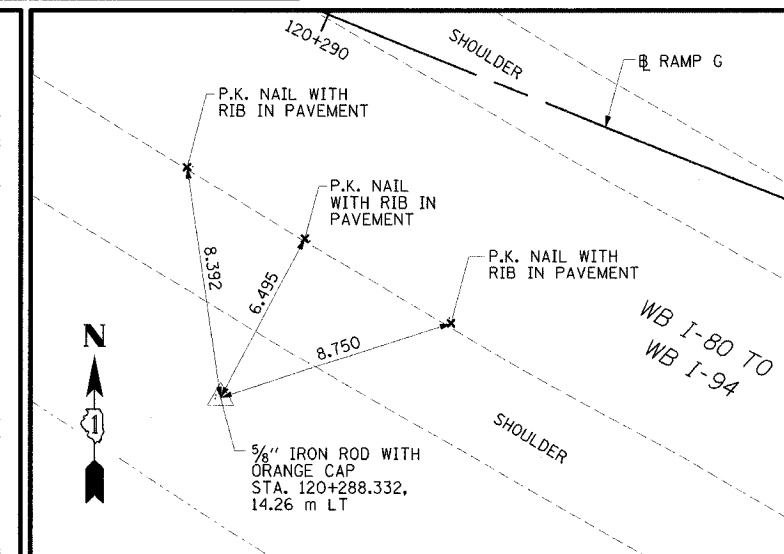
ACE #183 NORTHING: 545658.422 EASTING: 362831.481 ELEVATION = 183.454



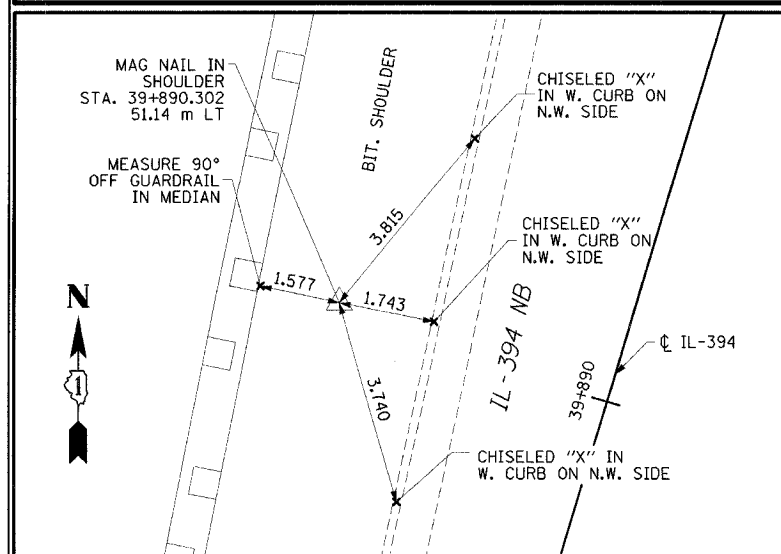
ACE #132 NORTHING: 545454.903 EASTING: 362473.445 ELEVATION = 187.920



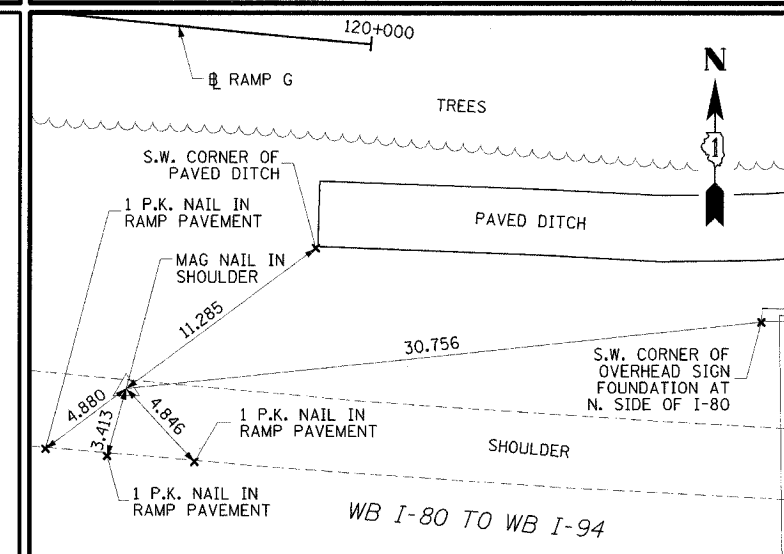
ACE #134 NORTHING: 545573.598 EASTING: 362671.837 ELEVATION = 189.826



ACE #136 NORTHING: 545577.549 EASTING: 363061.560 ELEVATION = 183.666



ACE #336 NORTHING: 545178.932 EASTING: 362599.066 ELEVATION = 196.004



ACE #337 NORTHING: 545506.297 EASTING: 363334.302 ELEVATION = 182.642

- NOTES:
1. ALL MEASUREMENTS ARE IN METERS (m) UNLESS OTHERWISE NOTED.
  2. ILLINOIS EAST ZONE STATE PLANE COORDINATES (NAD 83, 1986 ADJUSTMENT) ELEVATIONS (NAVD 88)

REVISIONS	
NAME	DATE

TB-5

ILLINOIS DEPARTMENT OF TRANSPORTATION  
I-80/94 WB FLYOVER RAMP  
TO SB IL 394 (RAMP G)

TIES

HORIZ SCALE: N.T.S.  
VERT SCALE: N.T.S.  
DATE: MARCH 23, 2005

DRAWN BY: JYMC  
CHECKED BY: JES

**HNTB**