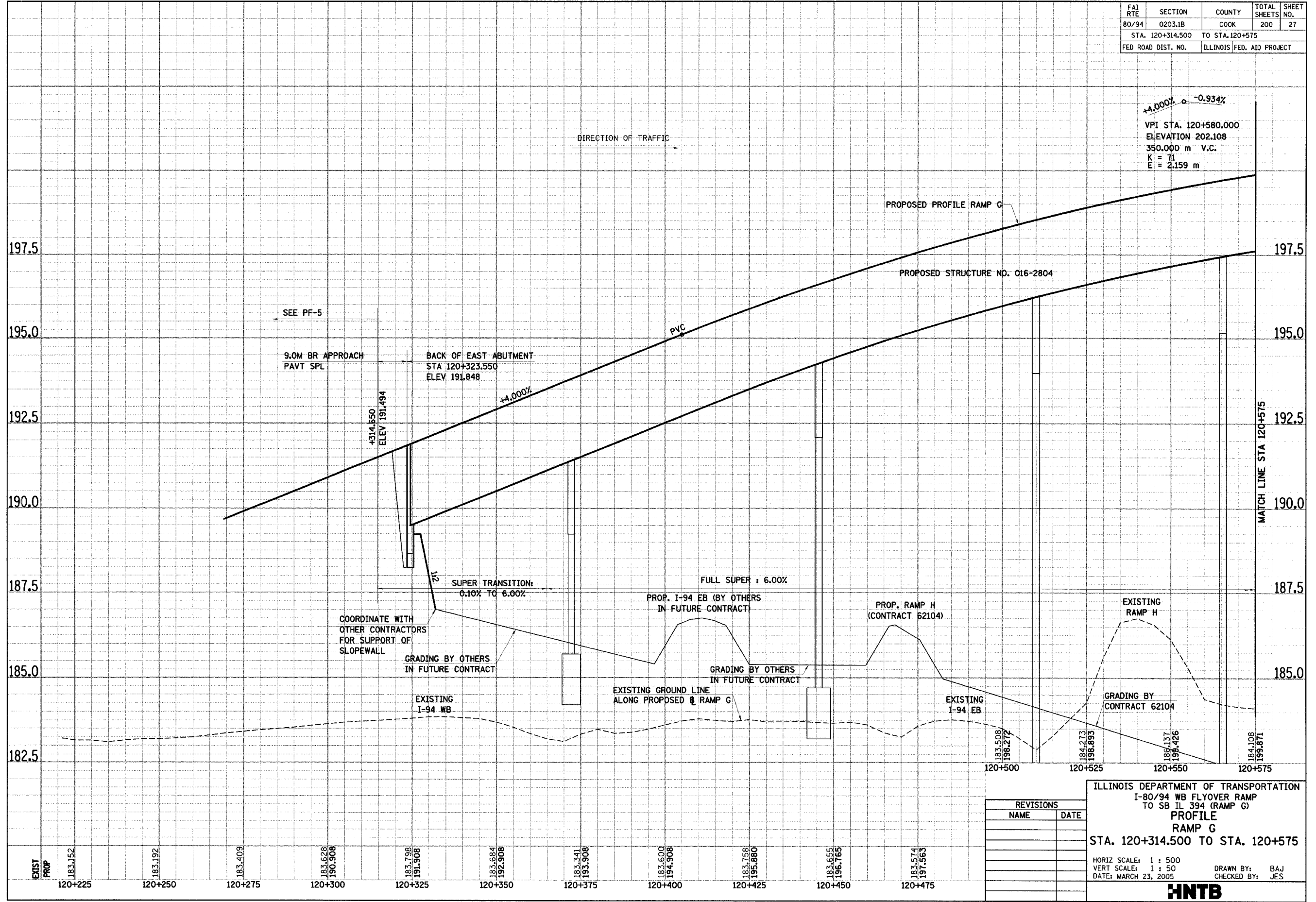


FAI RTE	SECTION	COUNTY	TOTAL SHEETS	SHEET NO.
80/94	0203.1B	COOK	200	27
STA. 120+314.500 TO STA. 120+575				
FED ROAD DIST. NO.		ILLINOIS FED. AID PROJECT		



J:\34562\CADD\TIC\cds\Contract28\pf280204a.dgn
JChan 28-MAR-2005 17:02

REVISIONS	
NAME	DATE

ILLINOIS DEPARTMENT OF TRANSPORTATION
I-80/94 WB FLYOVER RAMP
TO SB IL 394 (RAMP G)
**PROFILE
RAMP G**
STA. 120+314.500 TO STA. 120+575

HORIZ SCALE: 1 : 500
VERT SCALE: 1 : 50
DATE: MARCH 23, 2005

DRAWN BY: BAJ
CHECKED BY: JES

HNTB