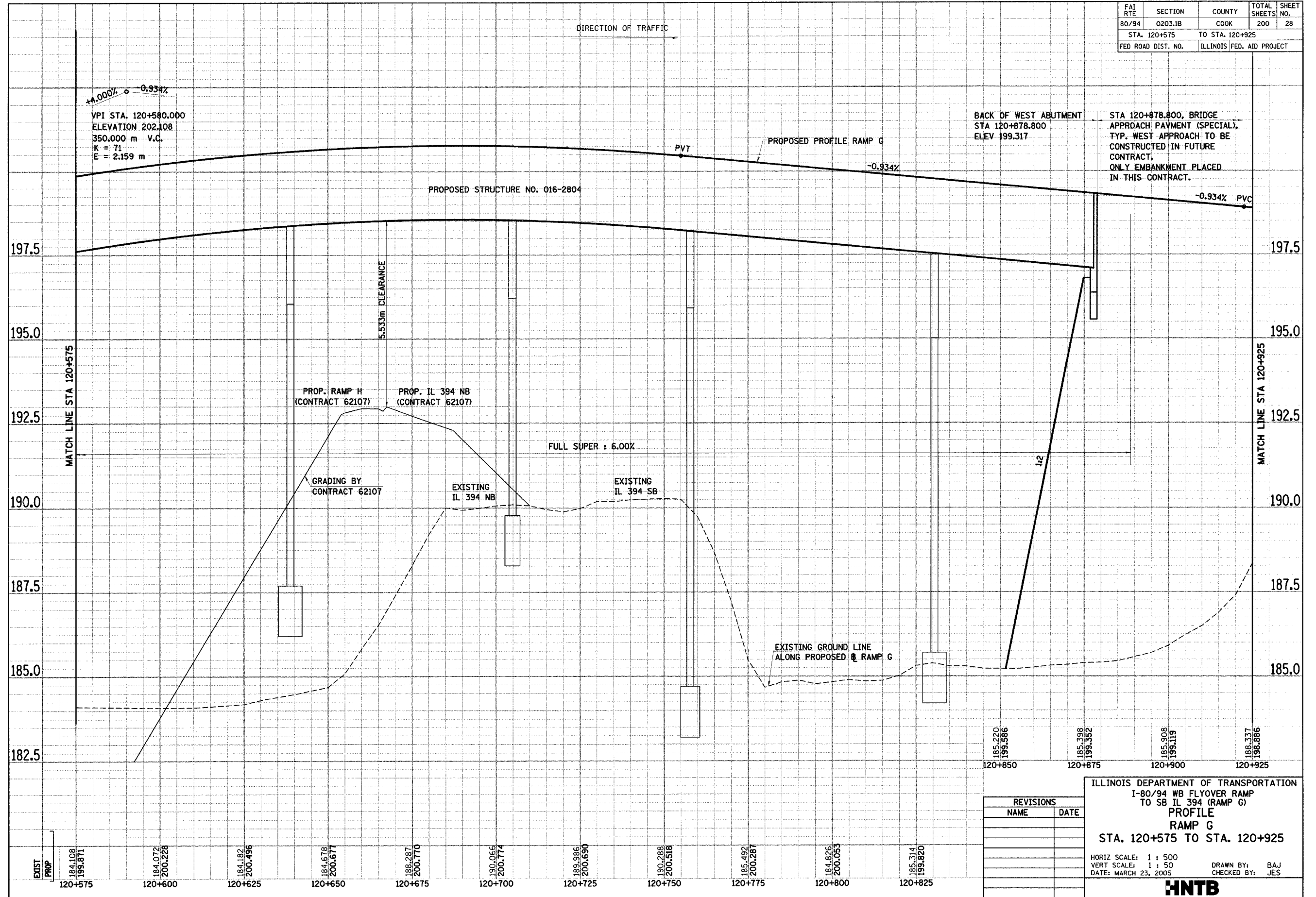


FAI RTE	SECTION	COUNTY	TOTAL SHEETS	SHEET NO.
80/94	0203.1B	COOK	200	28
STA. 120+575		TO STA. 120+925		
FED ROAD DIST. NO.		ILLINOIS FED. AID PROJECT		



J:\34562\CADD\TI\cde\Contract+28\pf280214.dgn  
 JChan 28-MAR-2005 17:05

REVISIONS	
NAME	DATE

ILLINOIS DEPARTMENT OF TRANSPORTATION  
 I-80/94 WB FLYOVER RAMP  
 TO SB IL 394 (RAMP G)  
**PROFILE**  
**RAMP G**  
 STA. 120+575 TO STA. 120+925

HORIZ SCALE: 1 : 500  
 VERT SCALE: 1 : 50  
 DATE: MARCH 23, 2005

DRAWN BY: BAJ  
 CHECKED BY: JES

**HNTB**