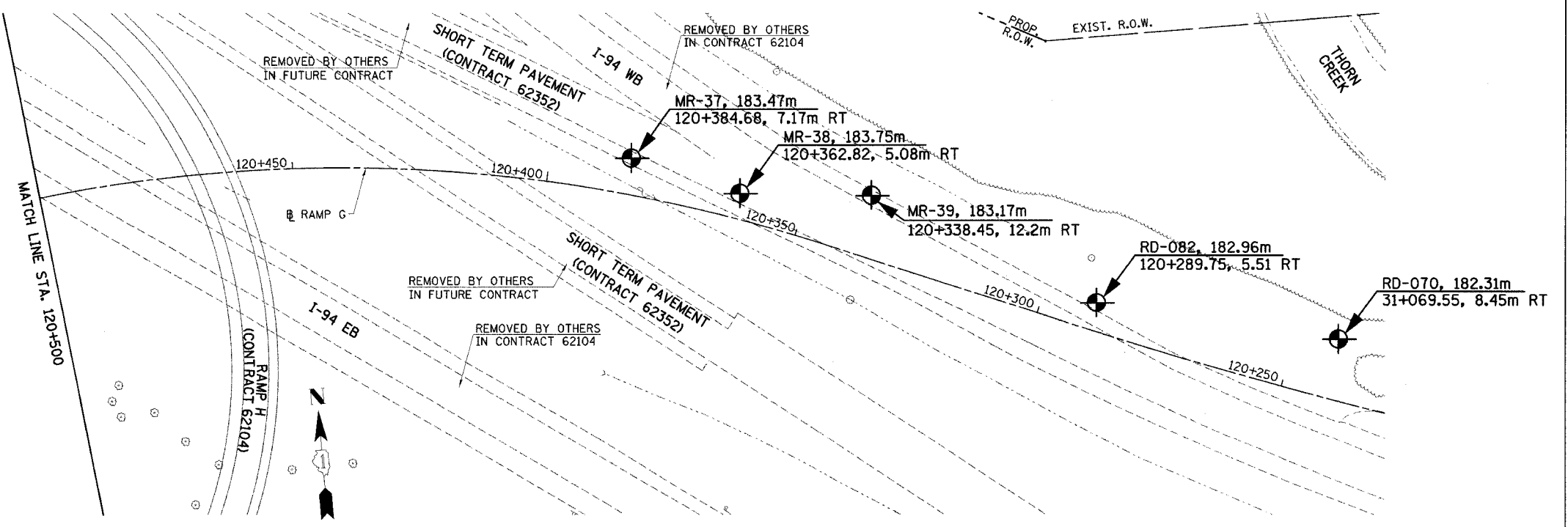


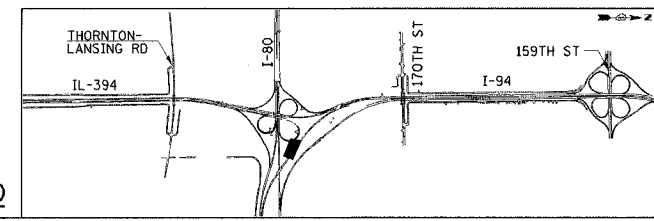
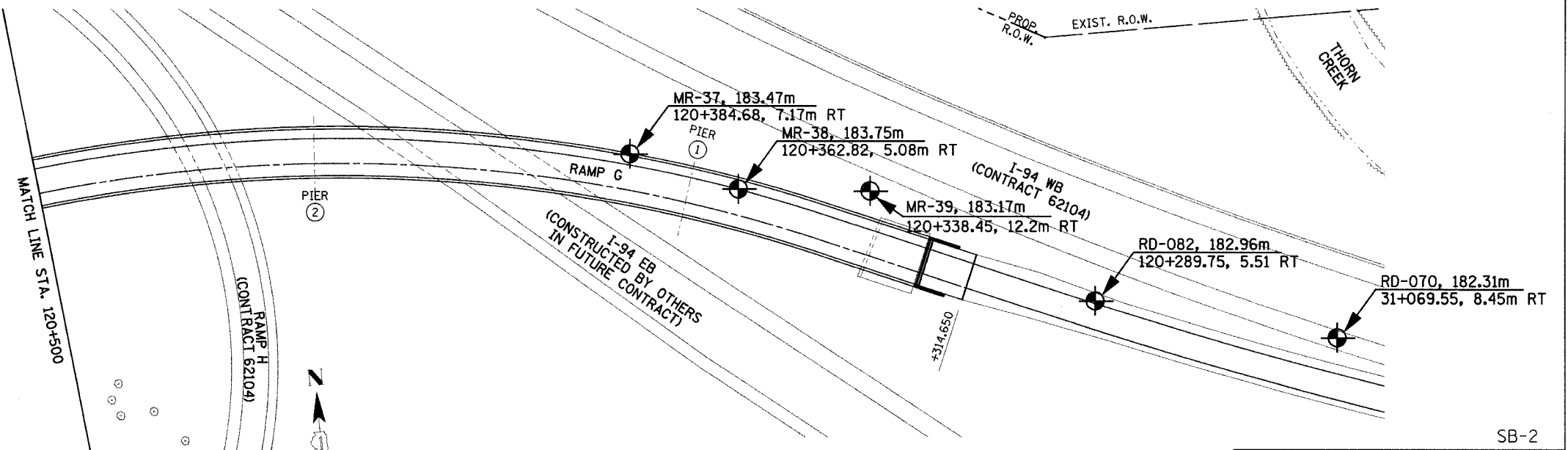
F.A.I. 80/94 (KINGERY EXPRESSWAY) SOIL PROFILE
ILLINOIS DEPARTMENT OF TRANSPORTATION, COOK COUNTY

HORIZ SCALE: 1:20	DRAWN BY: M.S.
VERT SCALE: 1:10	CHECKED BY: L.T.
Wang Engineering, INC. 1145 Main Street Lombard, IL 60148 630-953-9928	
Geo-Environmental Engineers 630-953-9928	
BASED ON DRAWINGS PREPARED BY HNTB CORPORATION 255-08-04	

FAI RTE	SECTION	COUNTY	TOTAL SHEETS	SHEET NO.
80/94	0203.1B	COOK	200	31
STA. 120+500 TO STA. 120+250		ILLINOIS FED. AID PROJECT		



- NOTES:
1. ALL STATIONING AND OFFSET MEASUREMENTS OFF RAMP G UNLESS OTHERWISE NOTED.
 2. ALL DIMENSIONS ARE IN METERS (m) UNLESS OTHERWISE NOTED.



REVISIONS	
NAME	DATE

ILLINOIS DEPARTMENT OF TRANSPORTATION
I-80/94 WB FLYOVER RAMP
TO SB IL 394 (RAMP G)
SOIL BORING PLAN
RAMP G
STA. 120+500 TO STA. 120+250

HORIZ SCALE: 1:500
VERT SCALE: 1:10
DATE: MARCH 23, 2005

DRAWN BY: _____
CHECKED BY: _____