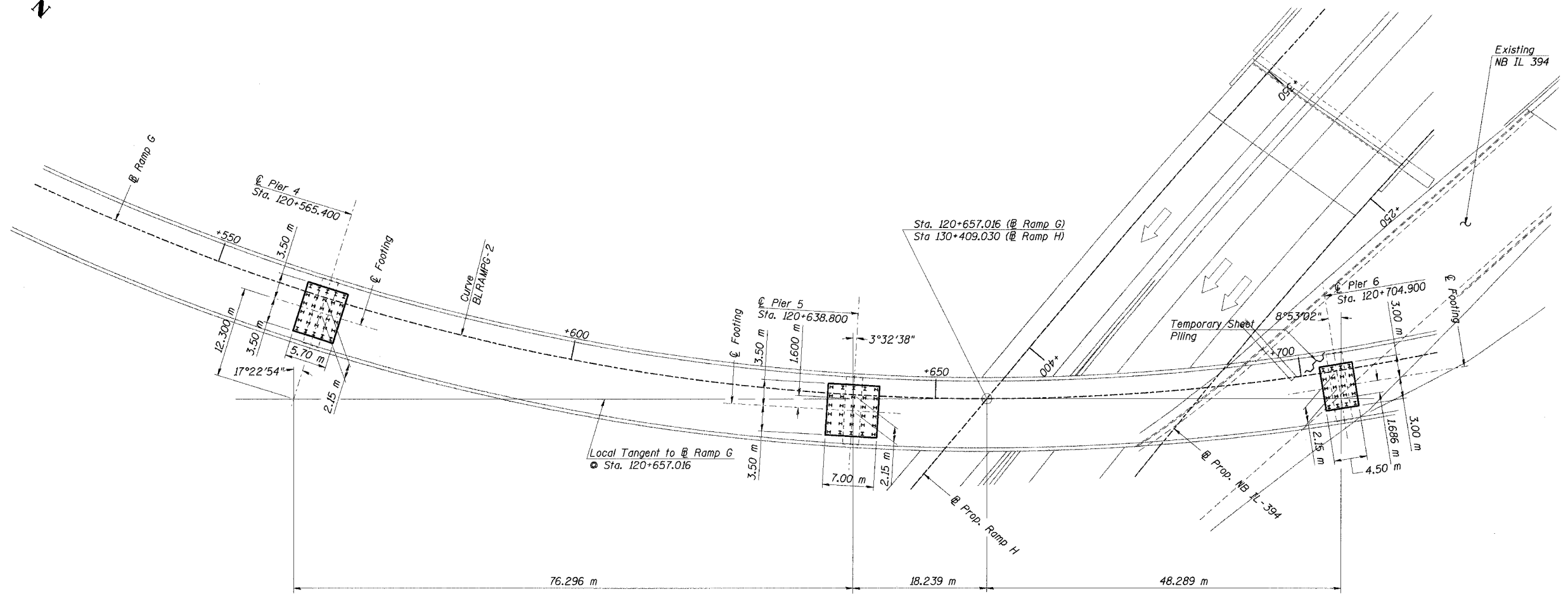
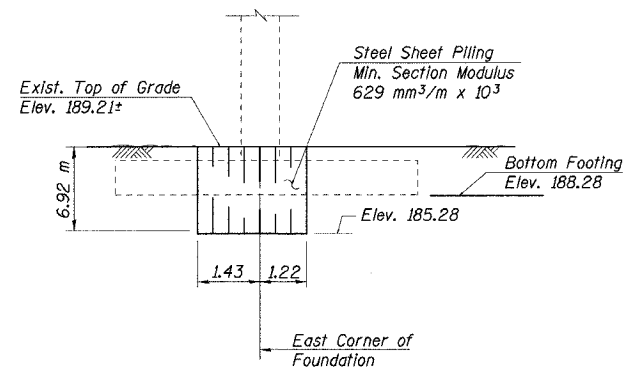


STATE OF ILLINOIS  
DEPARTMENT OF TRANSPORTATION

ROUTE NO.	SECTION	COUNTY	TOTAL SHEETS	SHEET NO.	SHEET NO.
F. A. I. 80/94	0203.1B	COOK	200	69	91 SHEETS
FED. ROAD DIST. NO. 1	ILLINOIS	FED. AID PROJECT-	CONTRACT NO. 62854		



FOOTING LAYOUT - SPANS 4-6



TEMPORARY SHEET PILING AT PIER 6

(Looking West)  
Quantity = 18.34 Sq m  
Minimum Embedment Depth = 2.0 m

PIER SHEET PILING NOTES:

1. If the contractor chooses to alter the temporary cantilevered sheet piling design requirements shown on the plans for lesser design requirements, then full design submittals with the required seals will be expected by the Department, for review and approval.

2. Steel Sheet Piling Yield Stress  $f_y = 265$  MPa

Notes:

1. All excavation for Pier foundations shall be backfilled with CA-6 compacted to the satisfaction of the Engineer, cost included with Structure Excavation.

J:\Beauchamp\633962\CD\01\1\CTR\_28\_2884\cda\1150024e\_2884.dgn  
28-MAR-2005 12:57

DESIGNED	JJK
CHECKED	GPM
DRAWN	LK
CHECKED	MEA

ILLINOIS DEPARTMENT OF TRANSPORTATION  
I-94/IL 394 SOUTH BOUND  
FOOTING LAYOUT - SPANS 4-6  
WB I-80/94 TO SB IL 394 - RAMP G  
FAI 80/94 - FAP 332 SECTION 0203.1B  
COOK COUNTY  
STA. 120+796.063 STRUCTURE NO. 016-2804  
DATE 3/23/05  
SCALE ---

**HNTB**