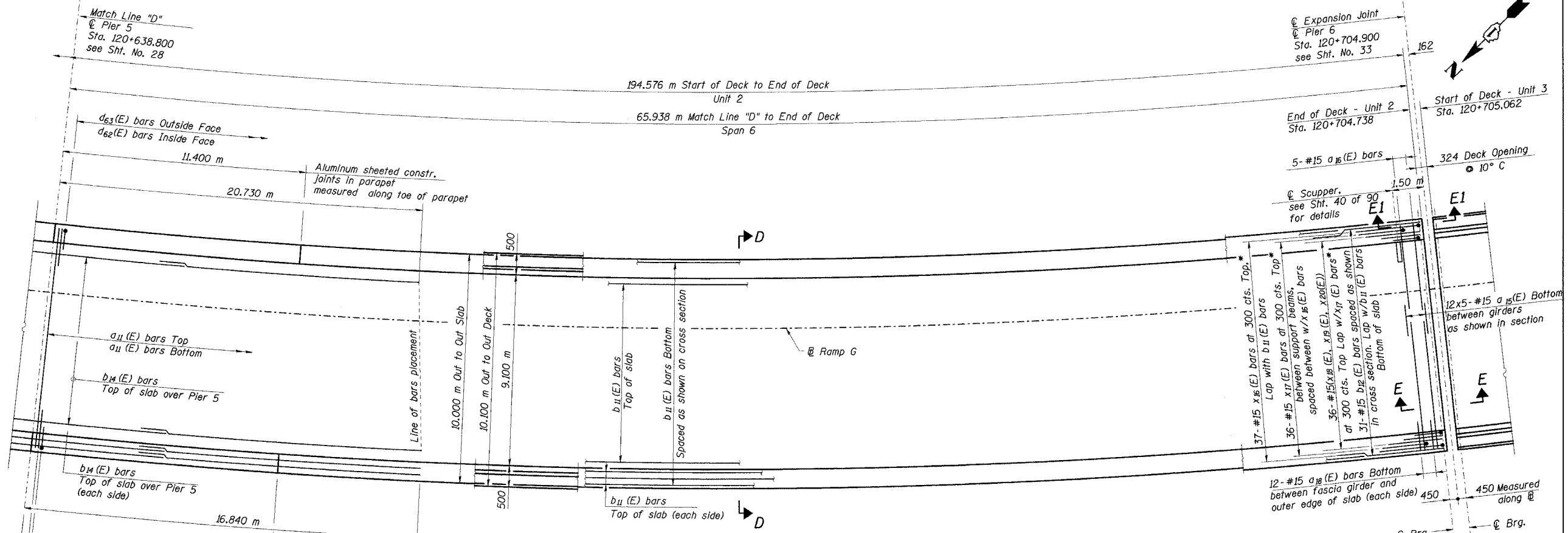


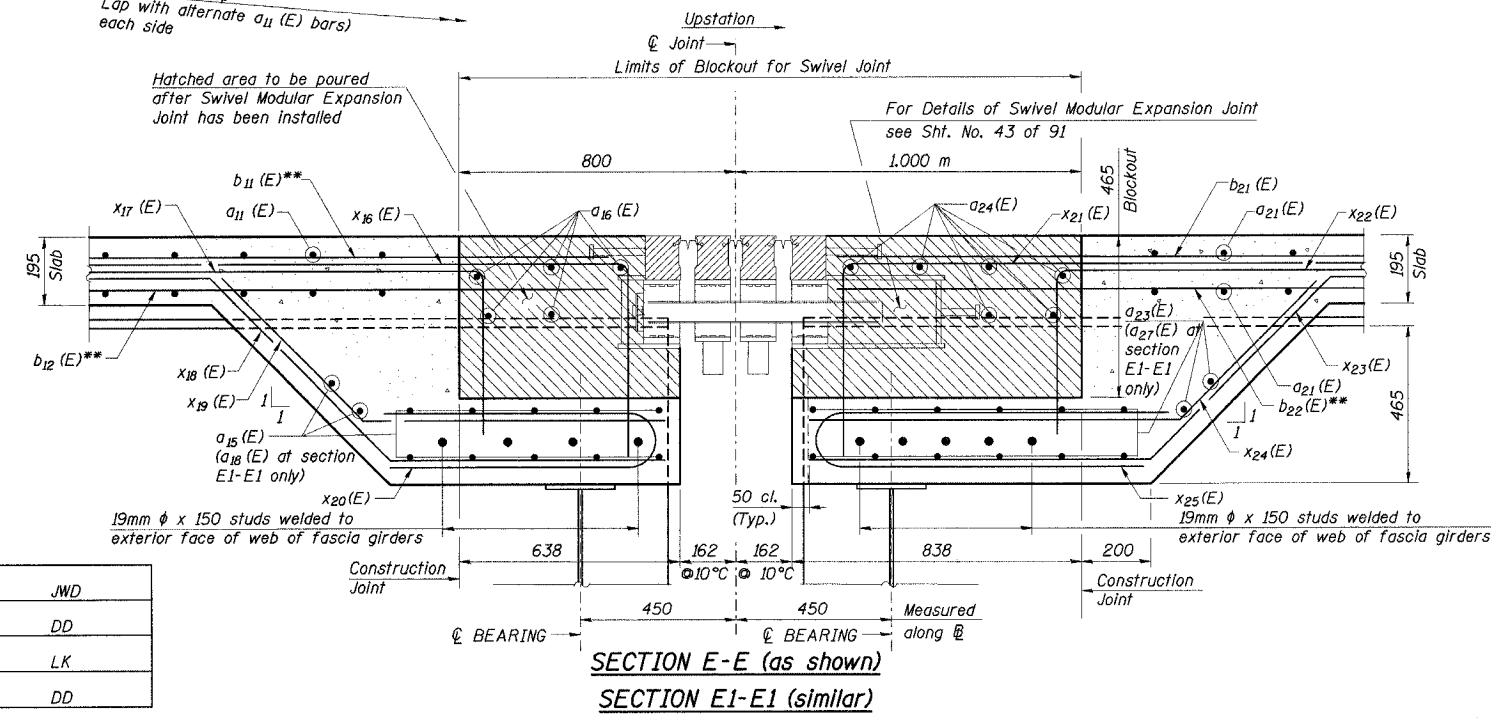
STATE OF ILLINOIS  
DEPARTMENT OF TRANSPORTATION

|                       |          |                   |              |           |              |
|-----------------------|----------|-------------------|--------------|-----------|--------------|
| ROUTE NO.             | SECTION  | COUNTY            | TOTAL SHEETS | SHEET NO. | SHEET NO. 29 |
| F. A. I. 80/94        | 0203.1B  | COOK              | 200          | 91        | 91 SHEETS    |
| FED. ROAD DIST. NO. 1 | ILLINOIS | FED. AID PROJECT- |              |           |              |



DECK PLAN - SPAN 6

\*  $x_{16}(E)$ ,  $x_{17}(E)$ ,  $x_{18}(E)$ ,  $x_{19}(E)$  and  $x_{20}(E)$  bars are at end of slab as shown in section C-C.



- Notes:
- Span dimensions given along baseline.
  - For deck cross section D-D, see Sht. No. 30.
  - For parapet reinforcement, see Sheets No's 30-32.
  - For localized scupper reinforcement and Bill of Material, see Sht. No. 39.
  - Typical lap splice lengths for reinforcement are based on a class C lap with 0.8 reduction for min. spacing:  
#15 bars - 510  
#20 bars - 640
  - Transverse reinforcement spacing is at outer edge. The transverse bars shall be placed radially and spacing along inner edge due to deck curvature is approximately:  
Outer spa. Inner spa.  
200 ~ 193  
250 ~ 242
  - All bars designated (E) are epoxy coated.
  - Bars indicated thus "12x5-#15 etc." indicates 12 lines of bars with 5 lengths per line.
  - Place d (E) series parapet bars to avoid Aluminum Sheeted Joint Locations in parapets.
  - All dimensions are in millimeters (mm) except as noted.

|          |     |
|----------|-----|
| DESIGNED | JWD |
| CHECKED  | DD  |
| DRAWN    | LK  |
| CHECKED  | DD  |

ILLINOIS DEPARTMENT OF TRANSPORTATION  
I-94/IL 394 SOUTH BOUND  
DECK PLAN  
SPAN 6  
WB I-80/94 TO SB IL 394 - RAMP G  
FAI 80/94 - FAP 332 SECTION 0203.1B  
COOK COUNTY  
STA. 120+796.063 STRUCTURE NO. 016-2804  
DATE 3/23/05  
SCALE ---

**HNTB**

J:\Beauchamp  
E:\34562\CADD\1\CTR\_28\_2804\cads\aut\50064a\_2804.dgn  
28-MAR-2005 12:35