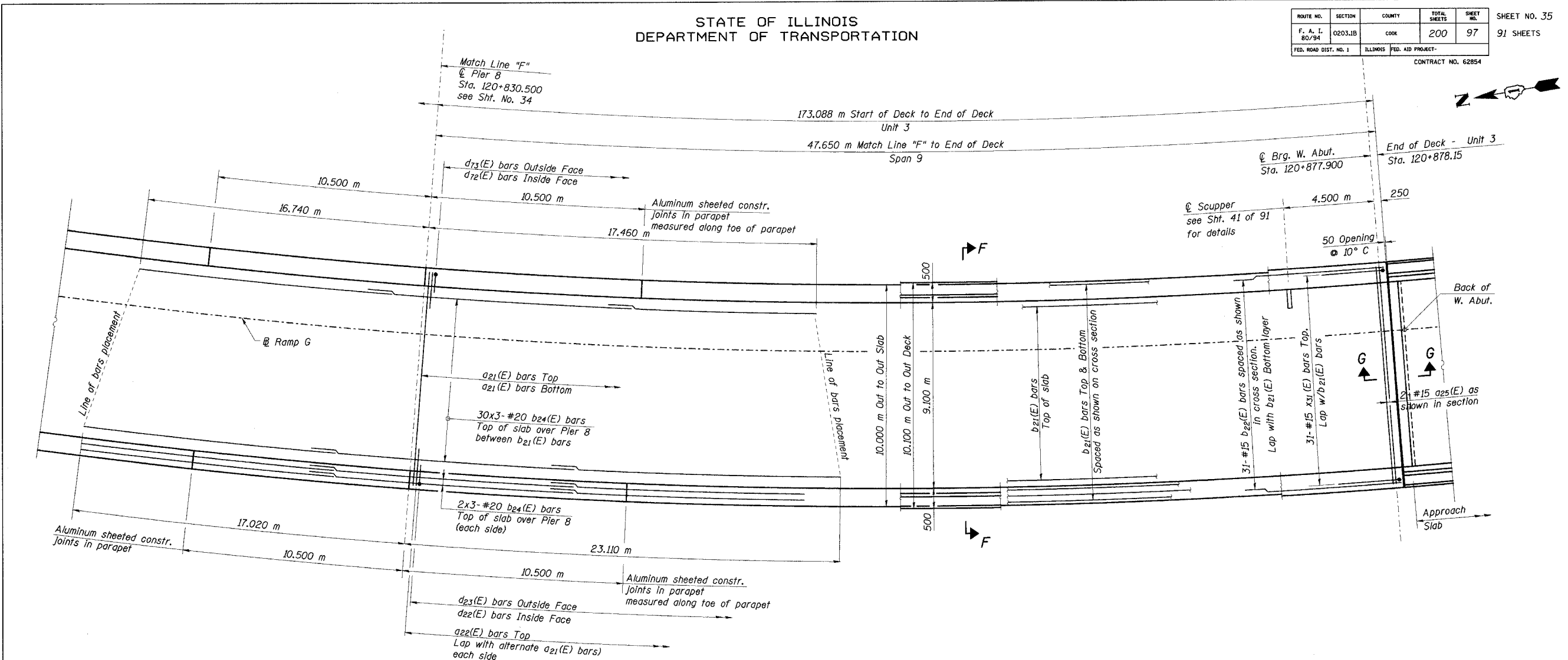


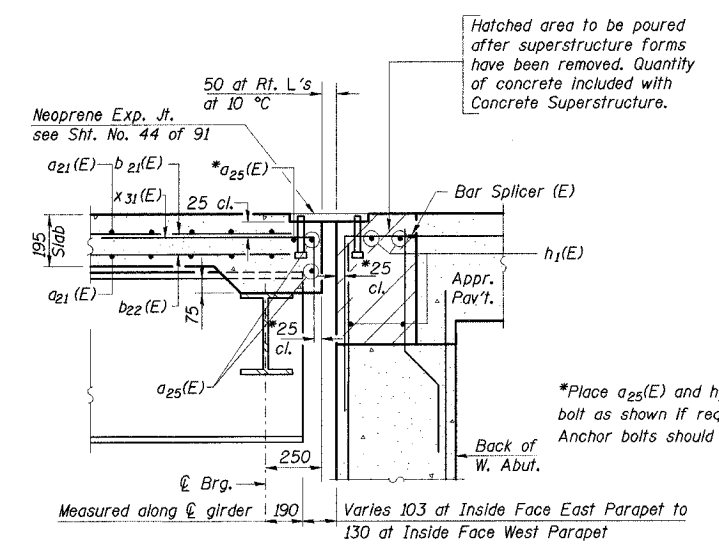
STATE OF ILLINOIS
DEPARTMENT OF TRANSPORTATION

ROUTE NO.	SECTION	COUNTY	TOTAL SHEETS	SHEET NO.	SHEET NO.
F. A. I. 80/94	0203.1B	COOK	200	97	91 SHEETS
FED. ROAD DIST. NO. 1	ILLINOIS	FED. AID PROJECT-			

CONTRACT NO. 62854



DECK PLAN - SPAN 9



SECTION G-G
(Section Thru W. Abut.)

- Notes:
- Span dimensions given along baseline.
 - For deck cross section F-F, see Sht. No. 36.
 - For parapet reinforcement, see Sheets No's 36-38.
 - For localized scupper reinforcement and Bill of Material, see Sht. No. 39.
 - Typical lap splice lengths for reinforcement are based on a class C lap with 0.8 reduction for min. spacing:
#15 bars - 510
#20 bars - 640
 - Transverse reinforcement spacing is at outer edge. The transverse bars shall be placed radially and spacing along inner edge due to deck curvature is approximately:
Outer spa. Inner spa.
200 ~ 193
250 ~ 242
 - All bars designated (E) are epoxy coated.
 - For W. Abutment reinforcement in blockout, see Sheets No's 72 & 73.
 - For Neoprene Expansion Joint Detail, see Sht. No. 44.
 - Bars indicated thus "12x5-#15 etc." indicates 12 lines of bars with 5 lengths per line.
 - Place d (E) series parapet bars to avoid aluminum sheeted joint location in parapet.
 - All dimensions are in millimeters (mm) except as noted.

DESIGNED	JWD
CHECKED	DD
DRAWN	LK
CHECKED	DD

ILLINOIS DEPARTMENT OF TRANSPORTATION
I-94/IL 394 SOUTH BOUND
DECK PLAN
SPAN 9
WB I-80/94 TO SB IL 394 - RAMP G
FAI 80/94 - FAP 332 SECTION 0203.1B
COOK COUNTY
STA. 120+796.063 STRUCTURE NO. 016-2804
DATE 3/23/05
SCALE ---

HNTB

J:\Beauchamp
E:\34562\CADD\B1\CTR-28-2804\cadd\au1500914e-2804.dgn
28-MAR-2005 12:34